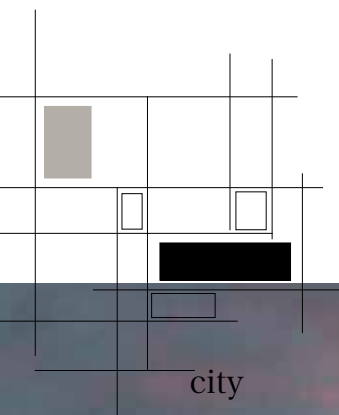




Concept

The city has theater. squares, passages, intersections, street are theater spaces.
I propose this concert hall as recomposition of these theater space in the city.

Decomposition



Typology

Strings
Sounding Board
Soundpost
Street
District
Park

Layer of Change

Stuff

Space Plan

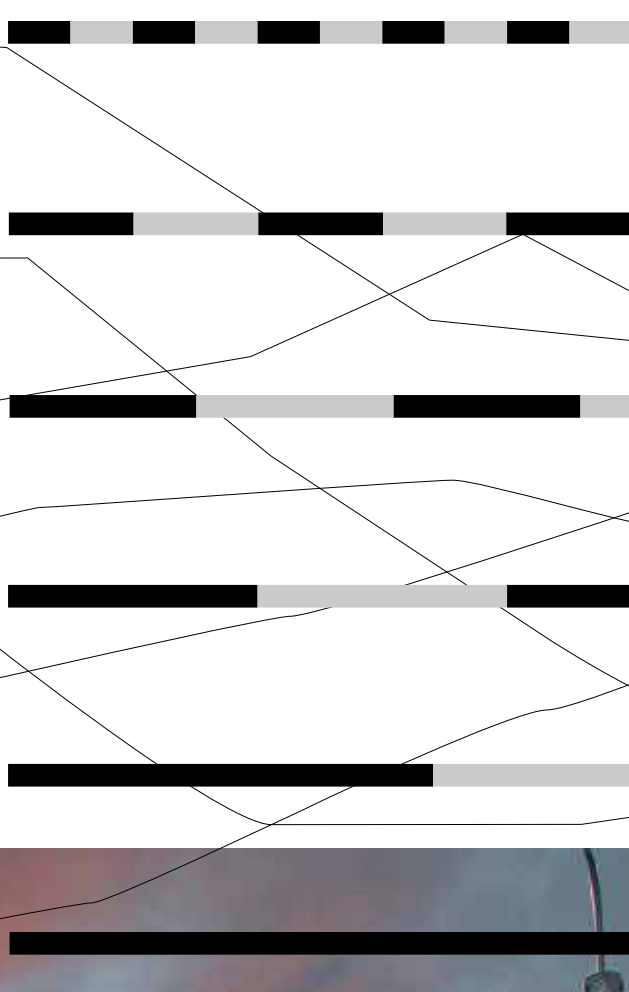
Service

Skin

Structure

Site

Time Span



Component

Sounding Board

roofs and facade is planned as sound board.
It amplify human activity and energy.

Vertical transportation

we can open the land to stack function vertically.

Void

To use architectural movility, I place margin.
This area metamorphose.

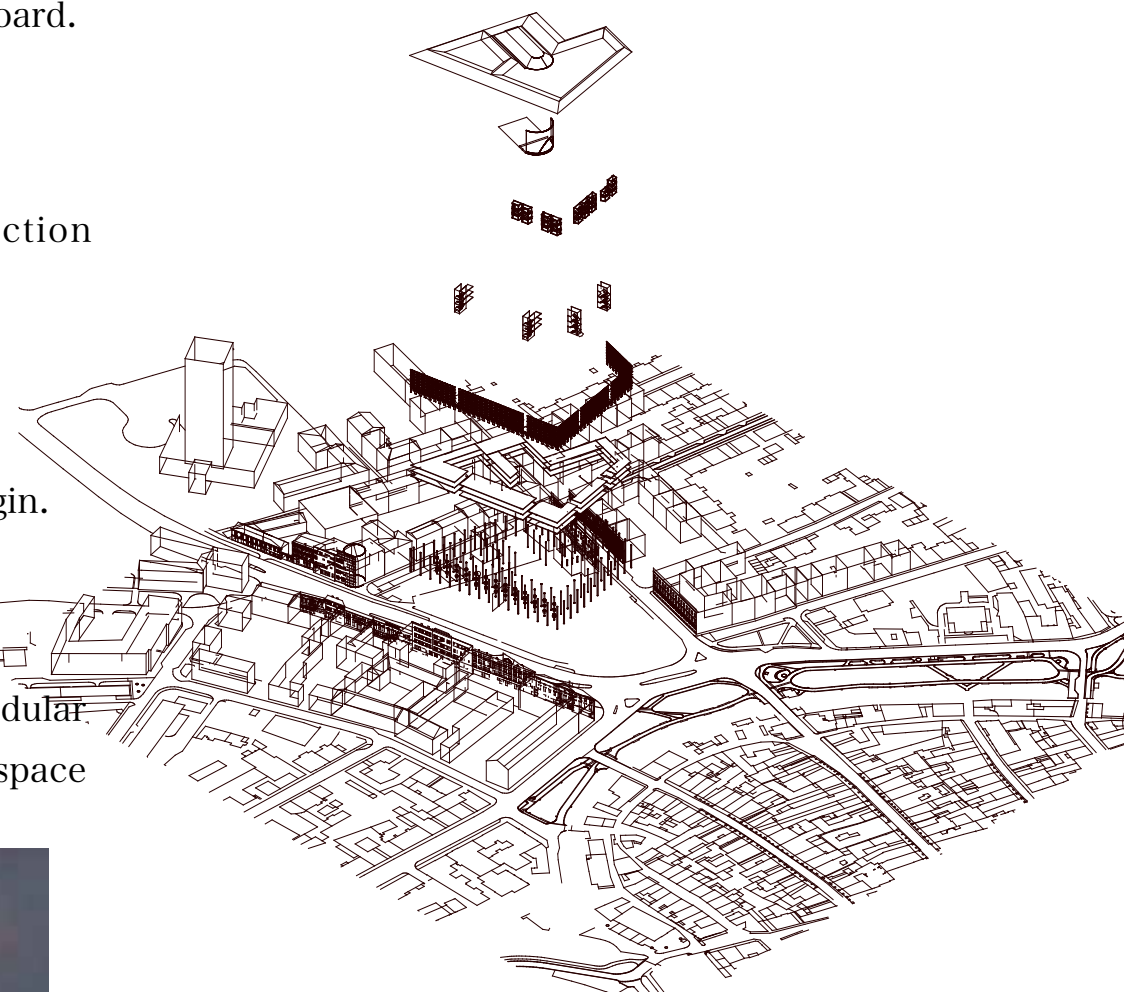
Module

This contain City Module of Koma Modular and Car. This is a personal minimum space of this plan.

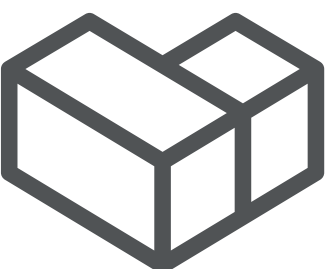
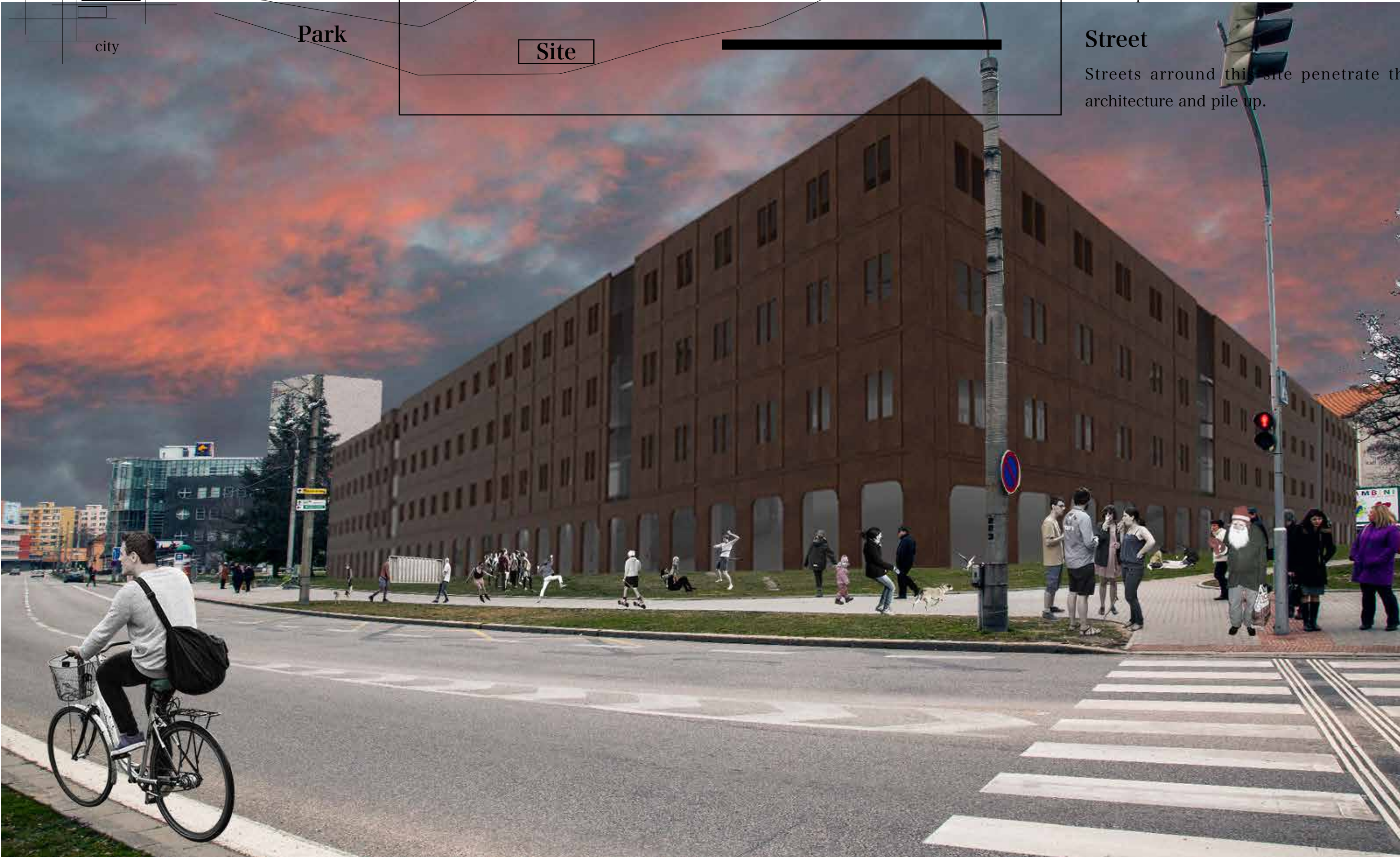
Street

Streets around this site penetrate this architecture and pile up.

Axonometric



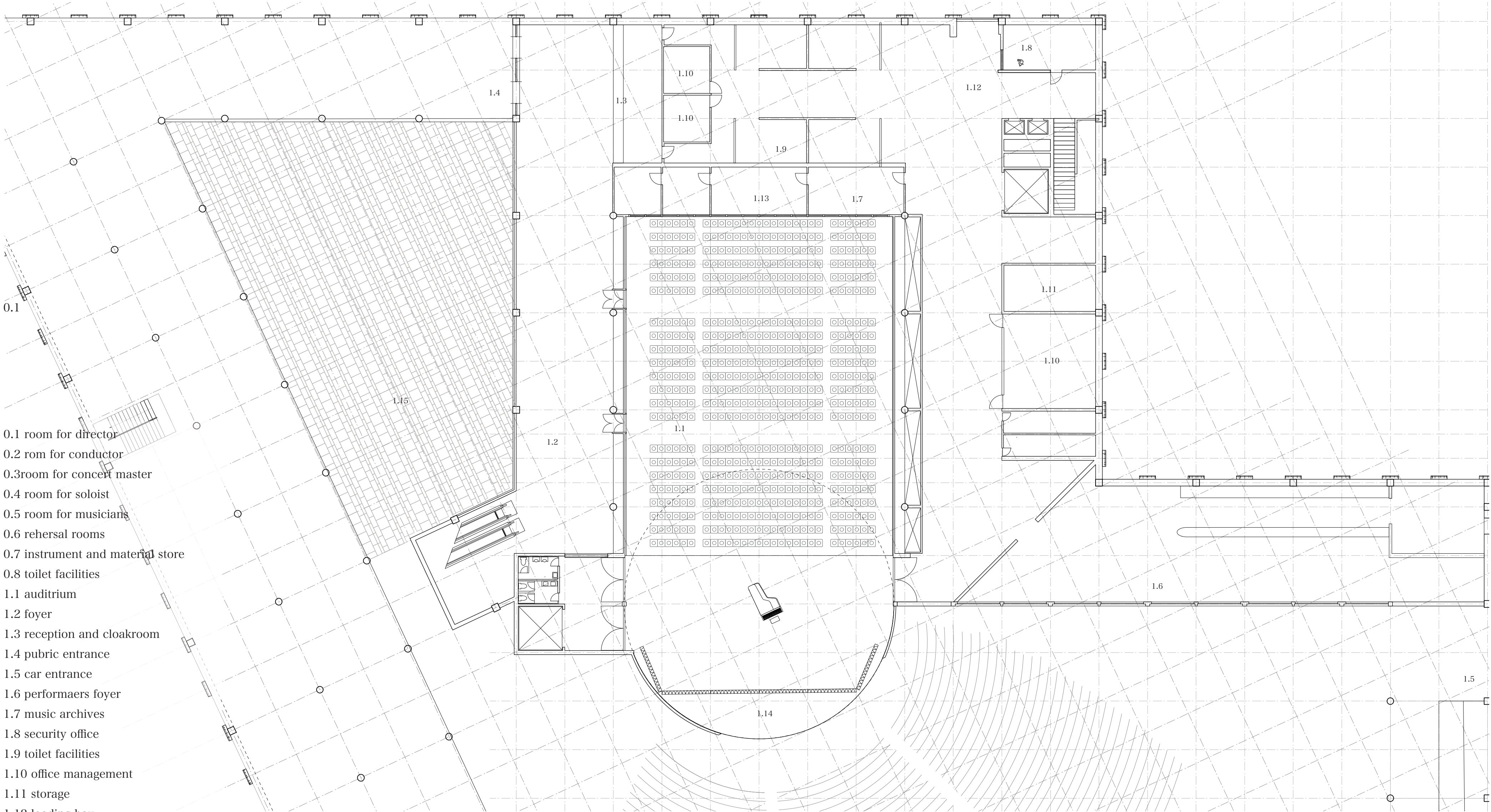
Site plan Scale = 1/1500



MODULARCH

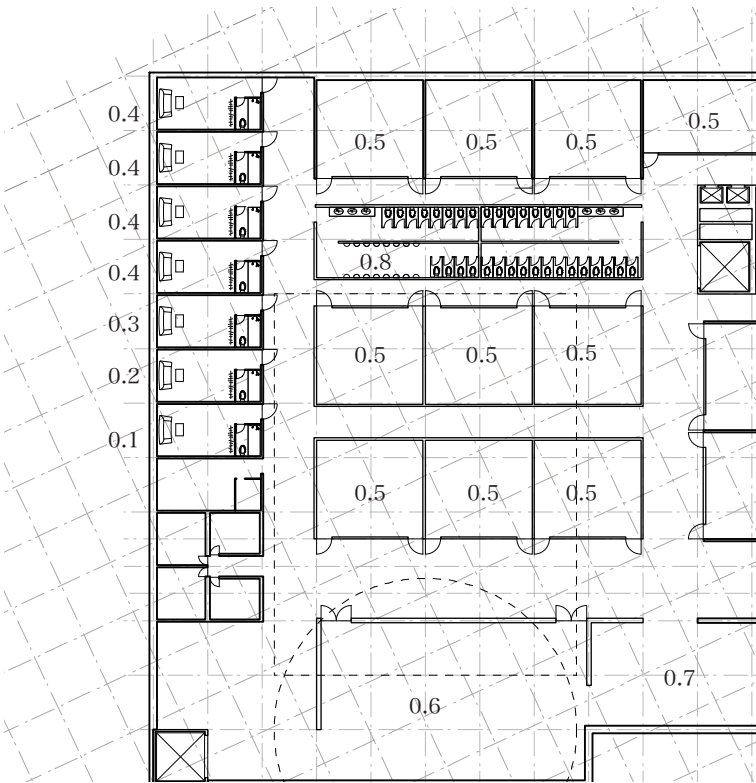
Leave Empty

2XYGGZ

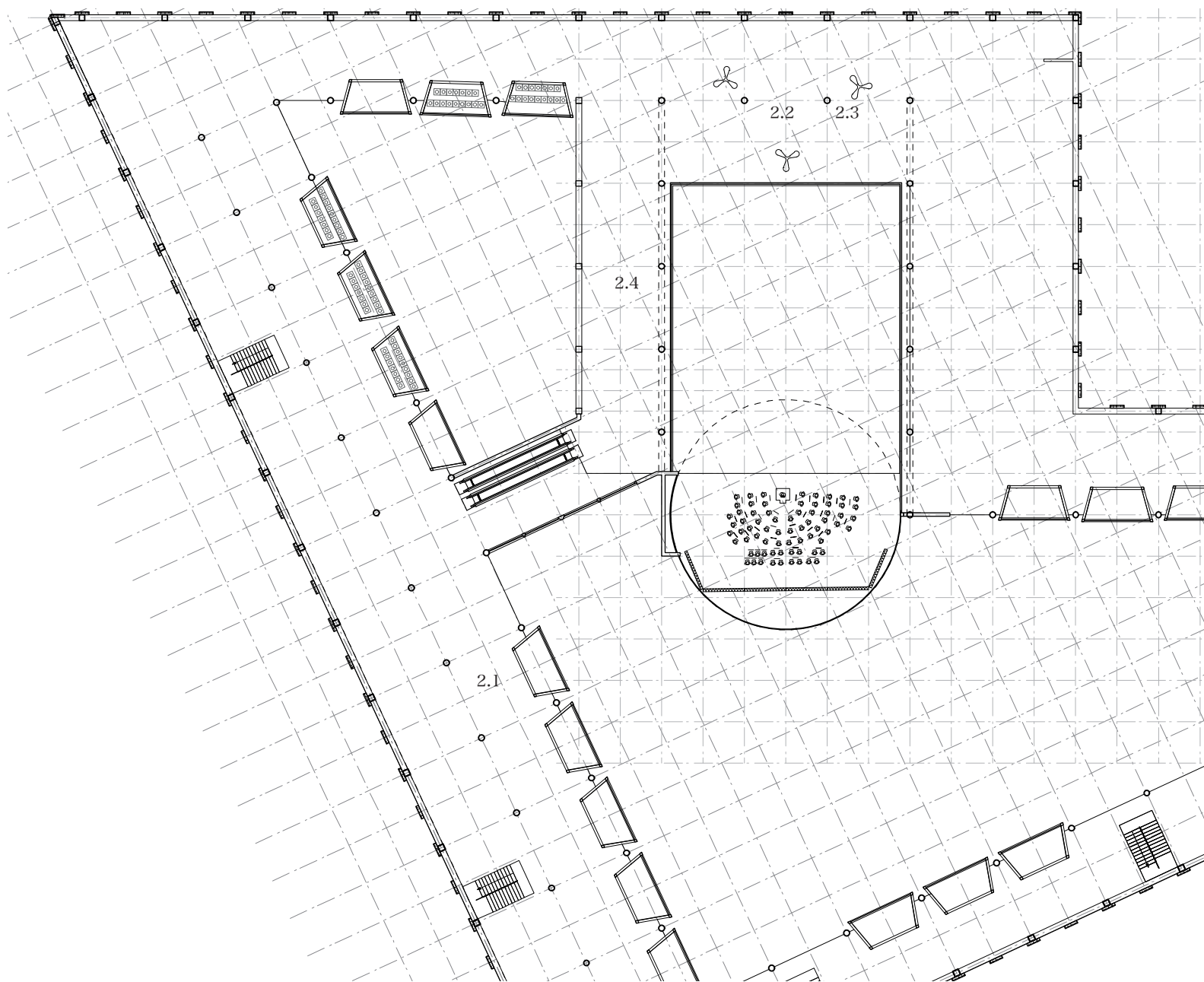


- 0.1 room for director
- 0.2 rom for conductor
- 0.3room for concert master
- 0.4 room for soloist
- 0.5 room for musicians
- 0.6 rehersal rooms
- 0.7 instrument and material store
- 0.8 toilet facilities
- 1.1 auditruium
- 1.2 foyer
- 1.3 reception and cloakroom
- 1.4 pubric entrance
- 1.5 car entrance
- 1.6 performaers foyer
- 1.7 music archives
- 1.8 security office
- 1.9 toilet facilities
- 1.10 office management
- 1.11 storage
- 1.12 loading bay
- 1.13 maintainance
- 1.14 open air stage
- 1.15 concert plaza
- 2.1 shop
- 2.2 restaurant
- 2.3 snack-bar
- 2.4 upper foyer
- 3.1 parking
- 3.2 adaptable seats

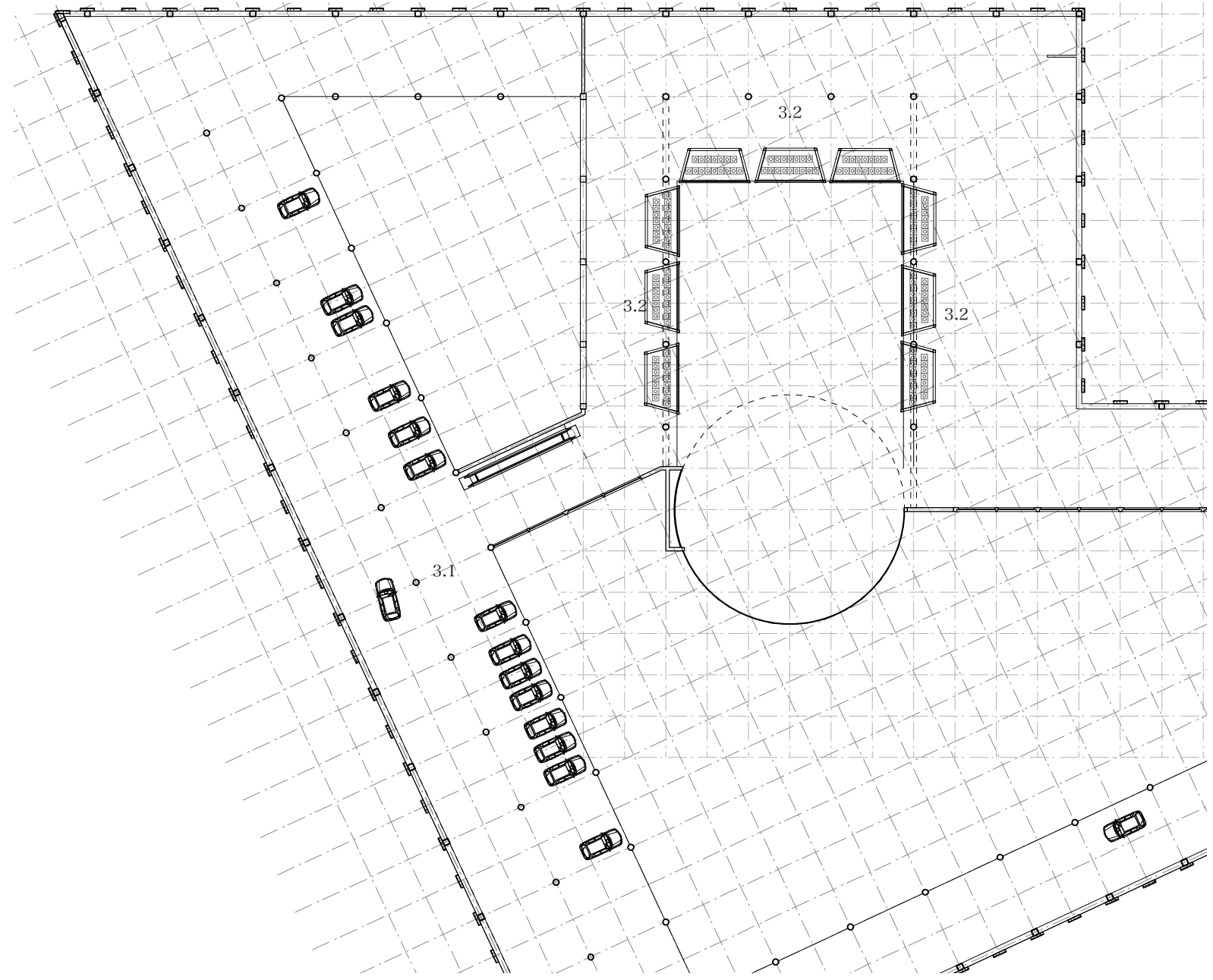
Level1 Scale=1/200



Level0 Scale=1/600



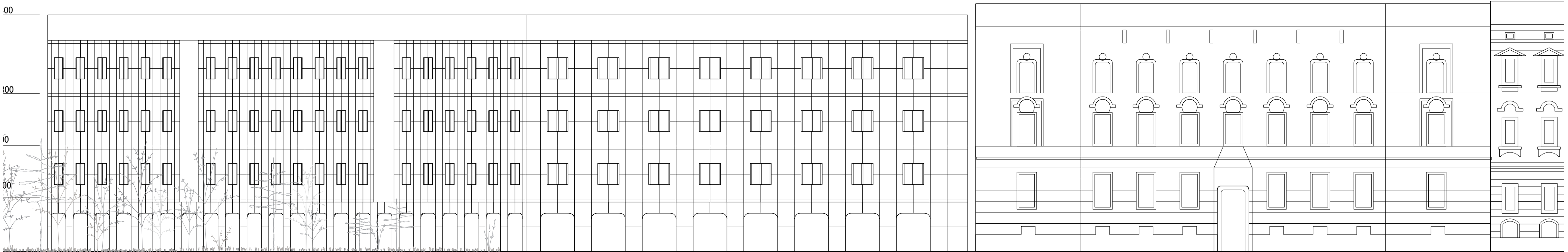
Level2 Scale=1/600



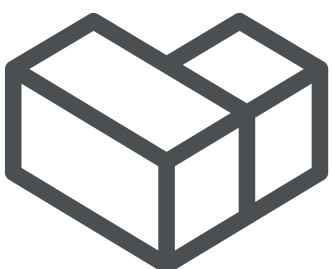
Level3-4 Scale=1/600



A-A' section Scale=1/200



east elevation Scale=1/200



MODULARCH

Leave Empty

2XYGGZ