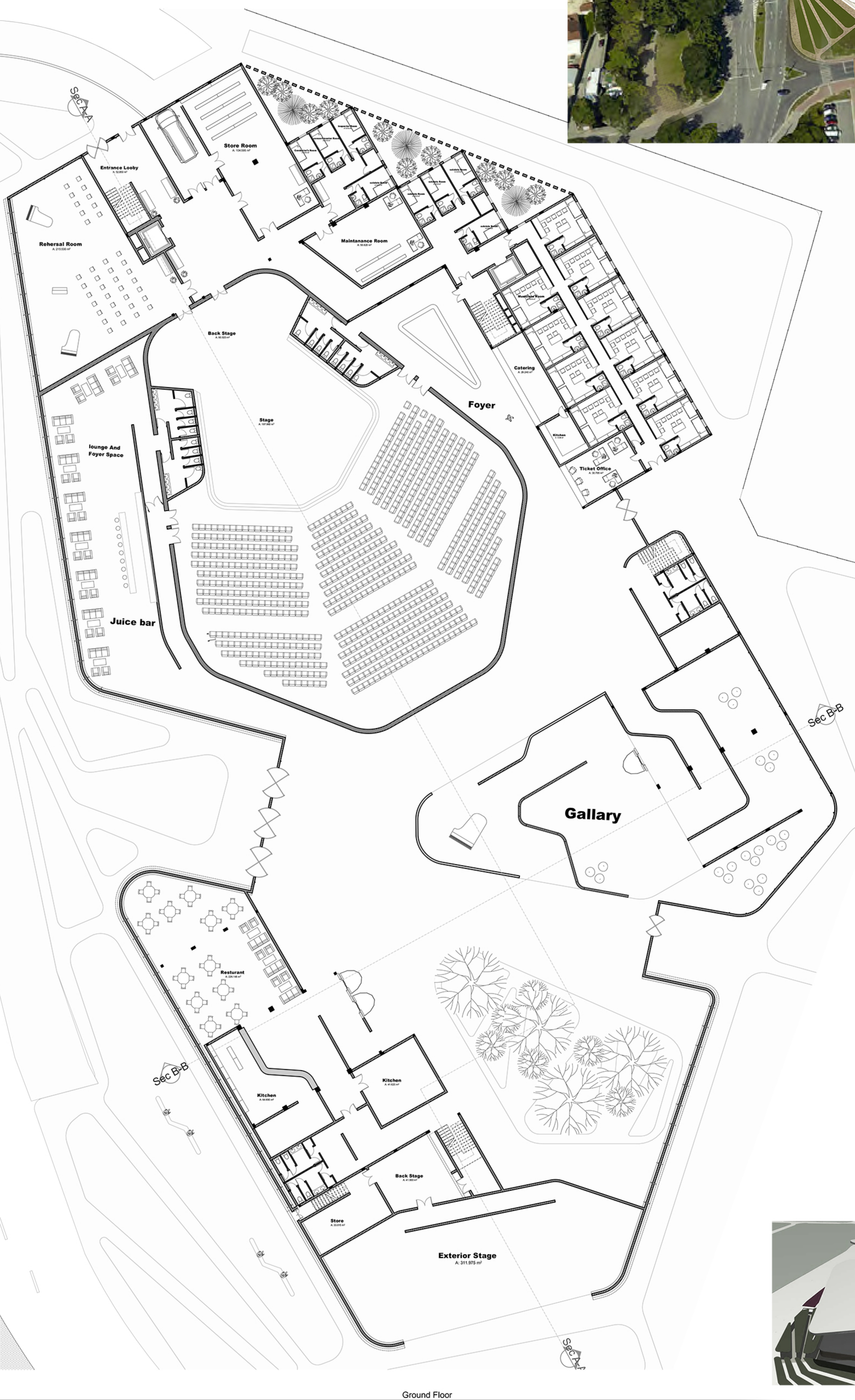


# Concept

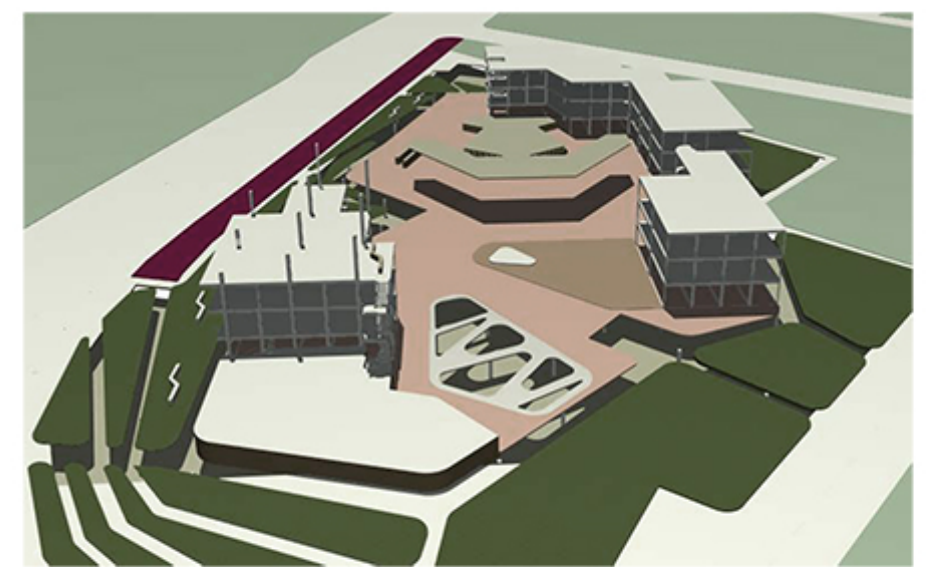
The design concept is inspired by Vltava and Malše Rivers in the city relating with music and people tried to manifest the idea of flowing and called the whole concept river rocks

There is nothing more powerful than a flow of a river, a stream of music or a drift of peoples towards something. When they strike we can just feel it. By taking this analogy tried to create a design where you can feel the river cracking the volume the music flowing deep inside the spaces



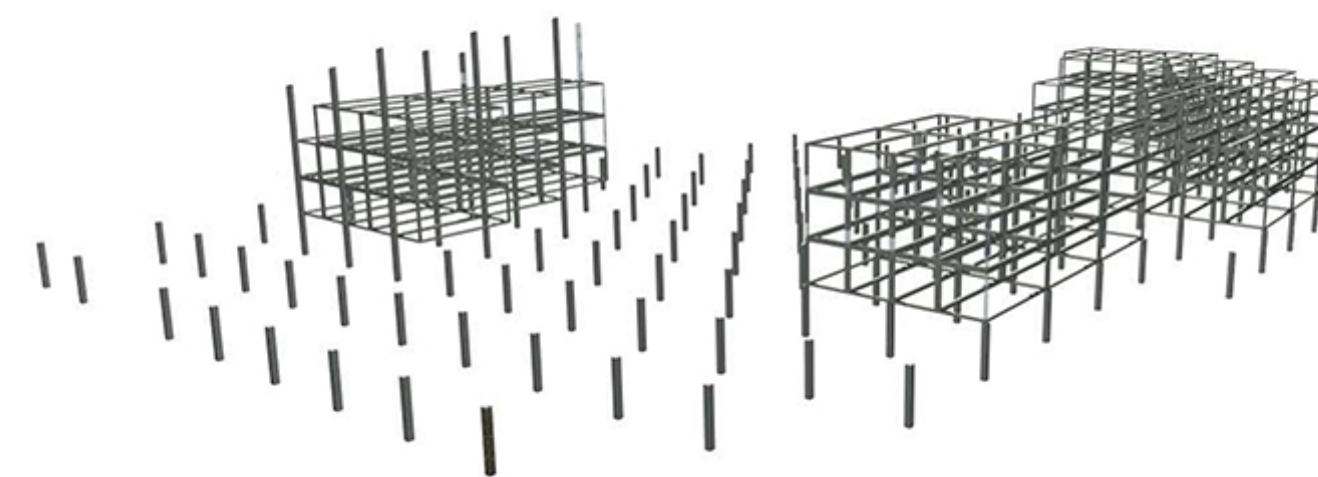
## Function

The spaces are divided in to three major spaces in the north said there is the auditorium with its facility rooms in the east side there is music based gallery space with additional supporting functions and the south and south west area of the site given to commercial functions while having the central space clear and open for lobby and atrium space



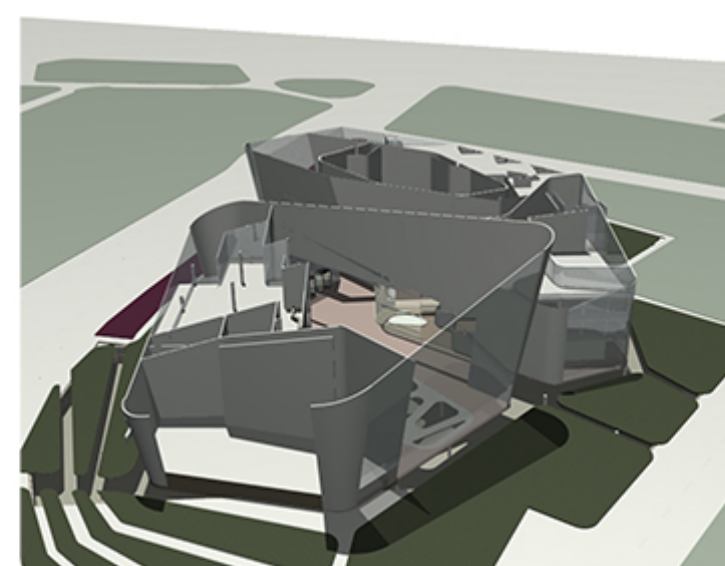
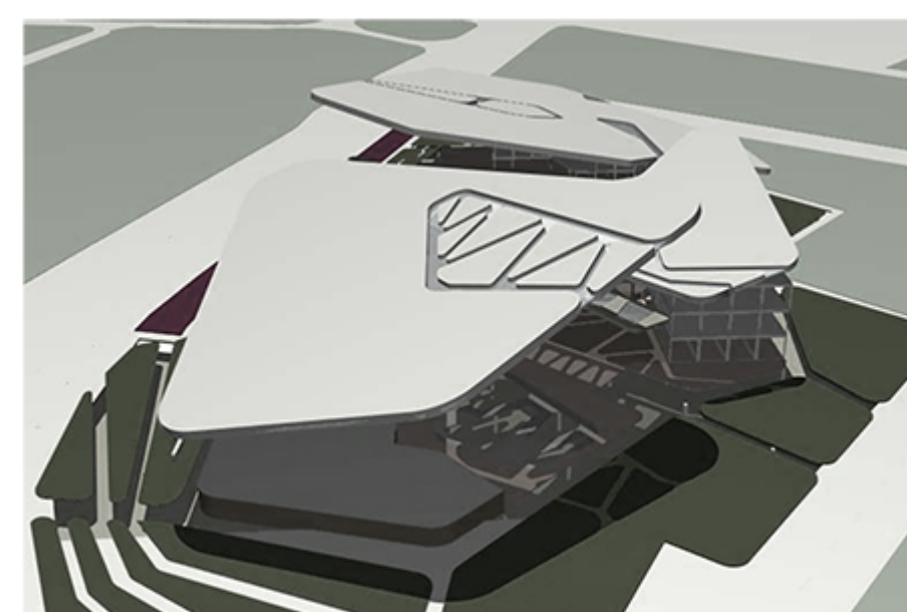
## Modular arrangement

The modules used in this design are KOMA COMFORT LINE modules with a size of 9m by 3.6m by 3.4. The modules are arranged based on the functional arrangement in the three major function spots having their own stair and lifts. The general design is created by using both the modules and addition wall structures

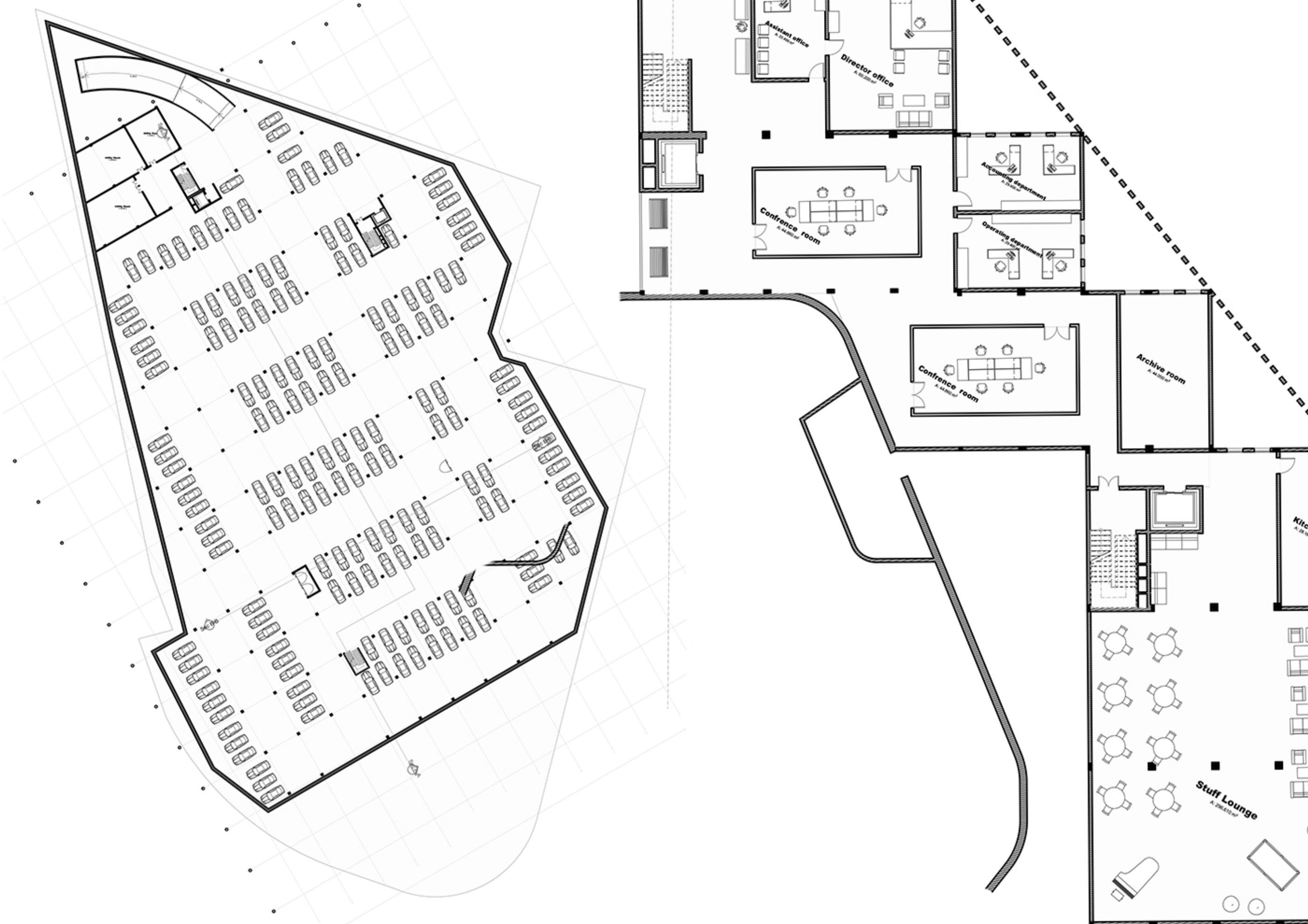
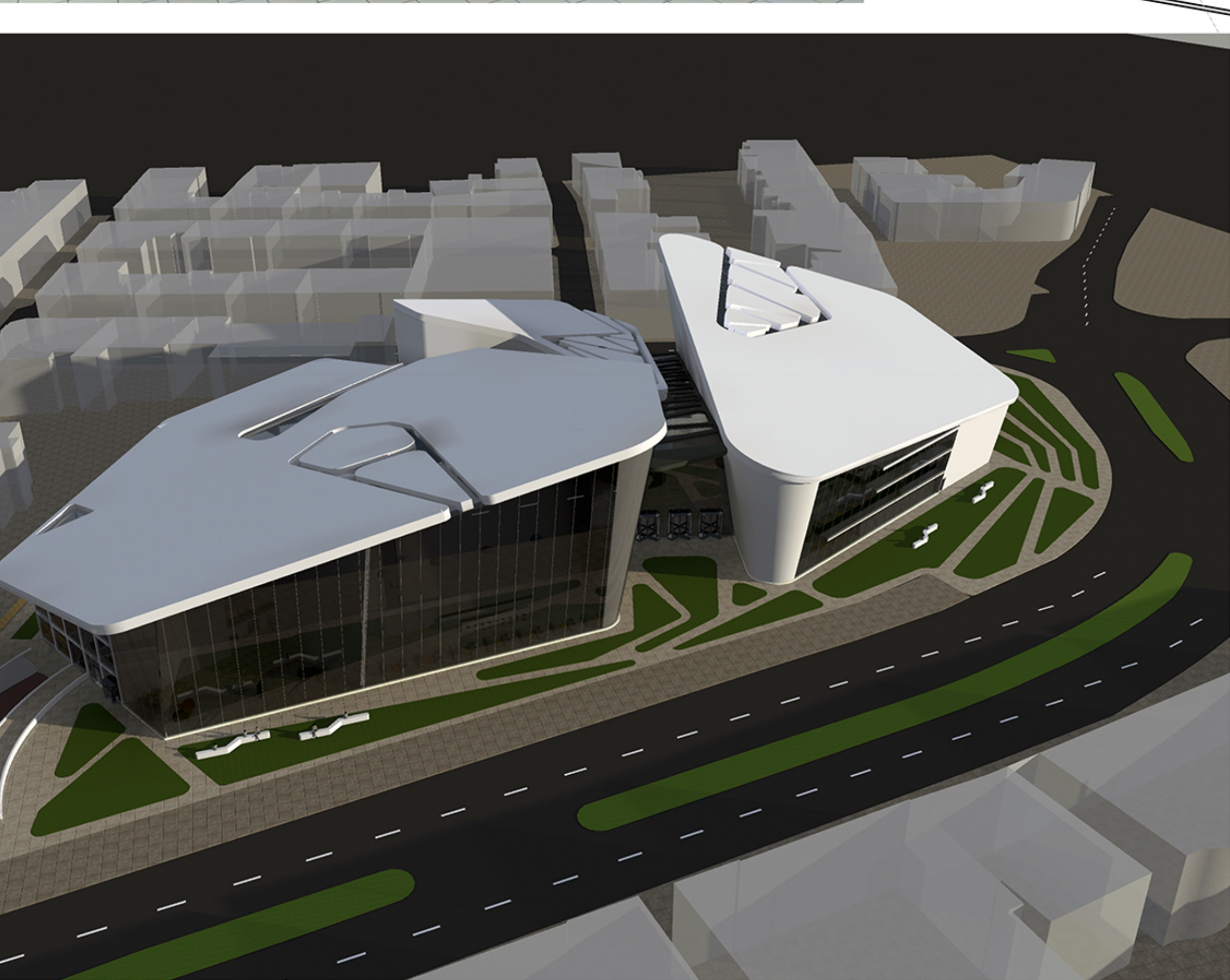
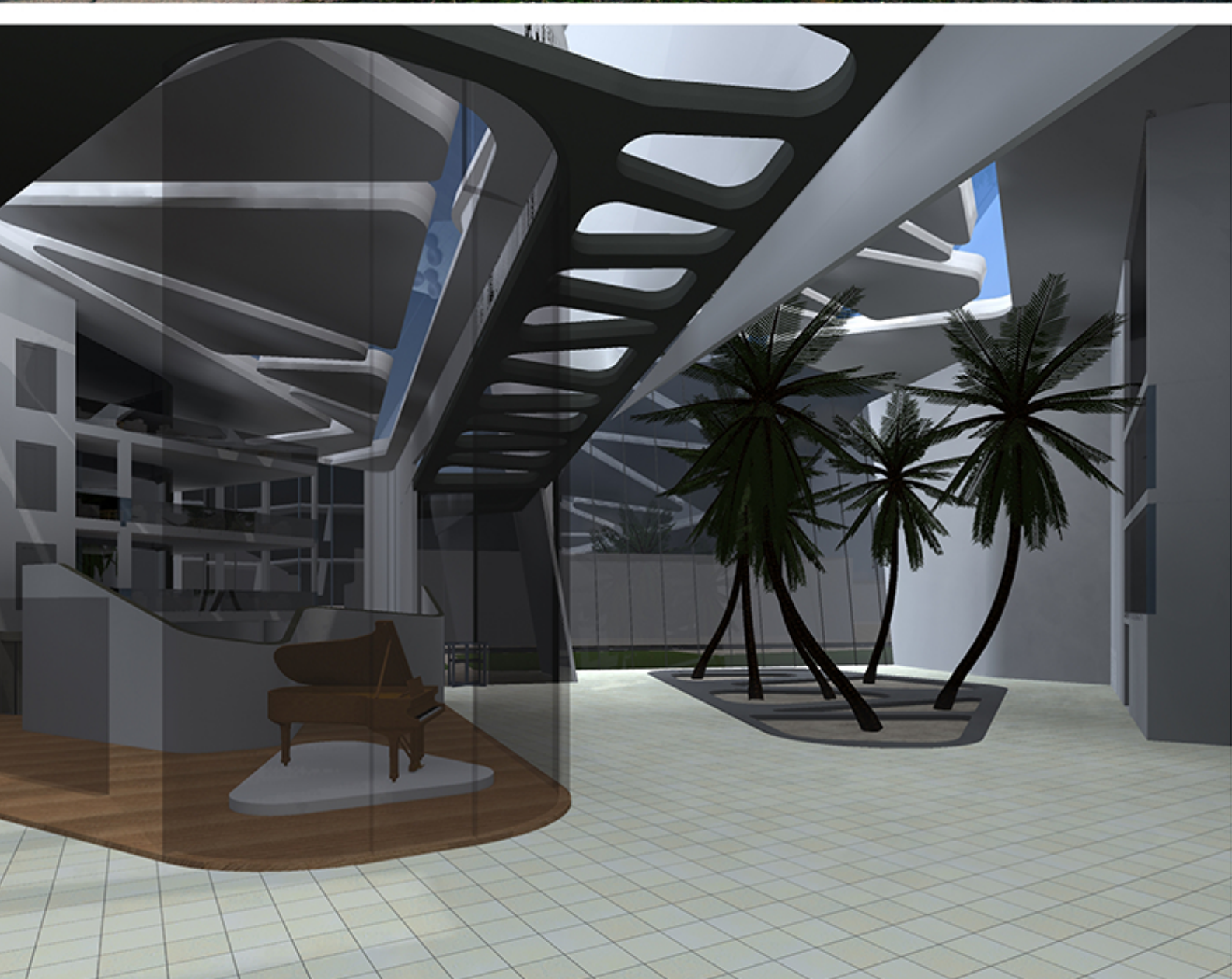


## Structure

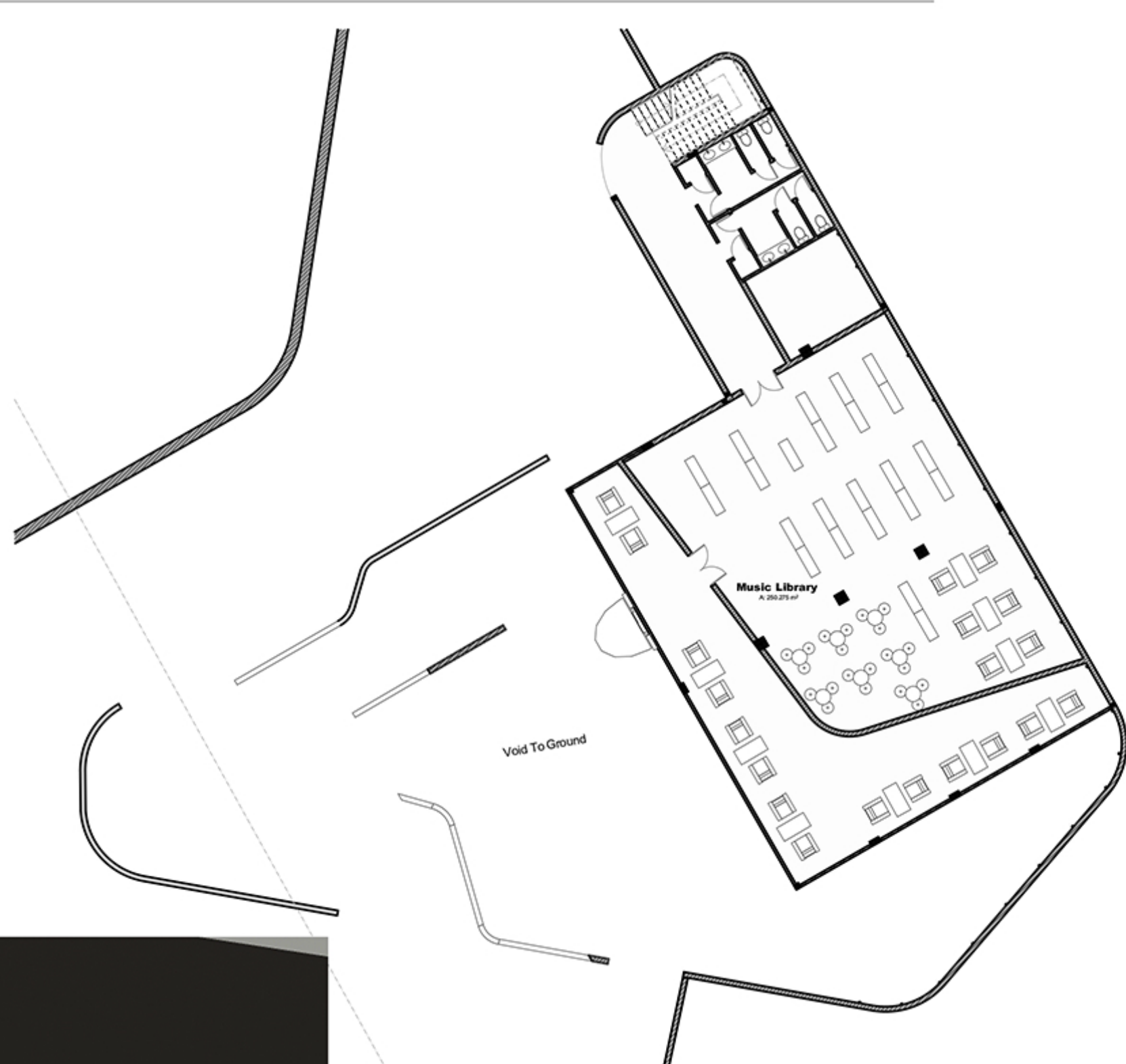
Columns are used in the basement floor to support the ground floor where the structural grid is made 9m by 7.2m to support and transfer the load directly from the modules to the foundation. The roof structure is supported by the columns from the ground and from the modules and also supported by solid walls of different spaces.



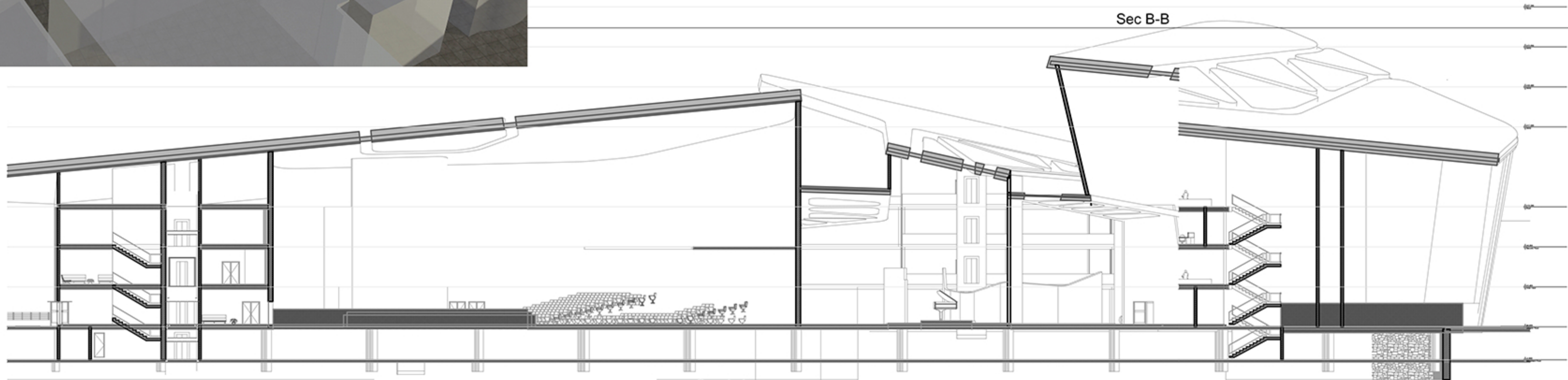
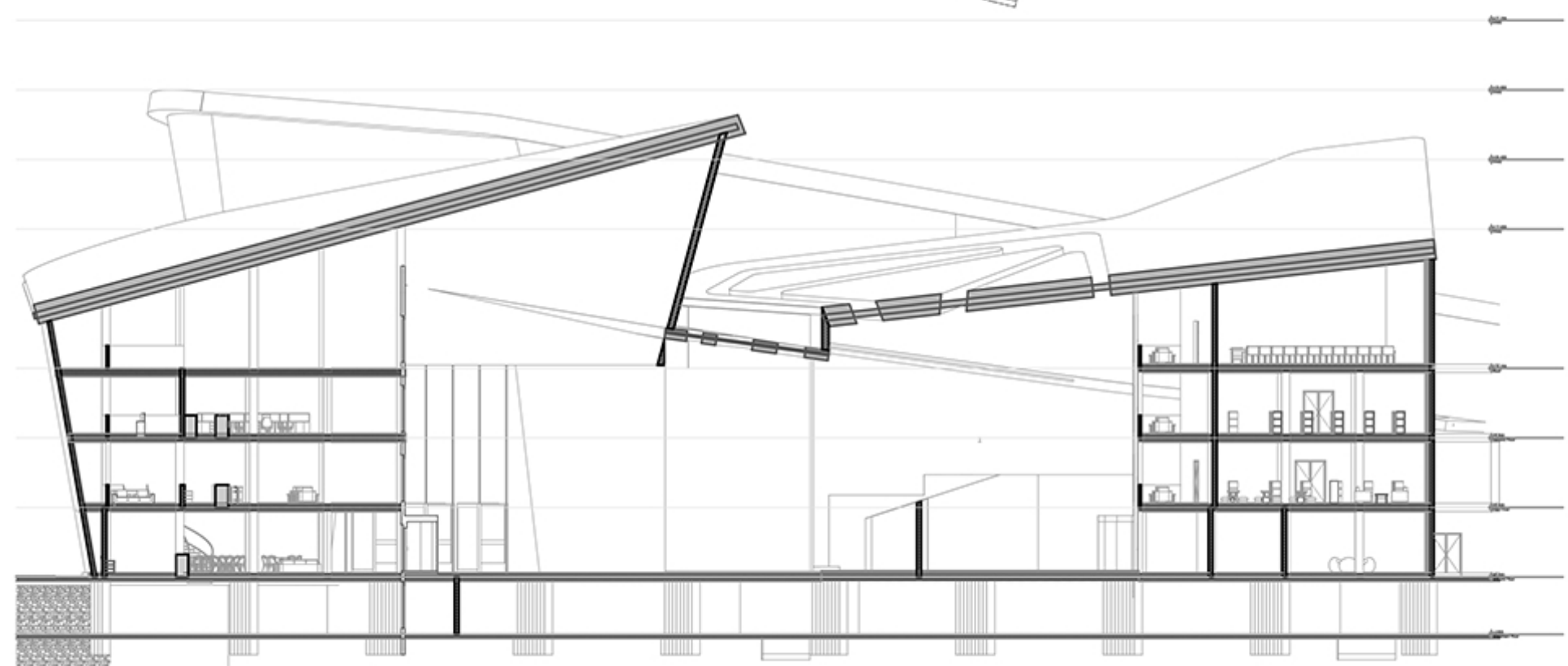
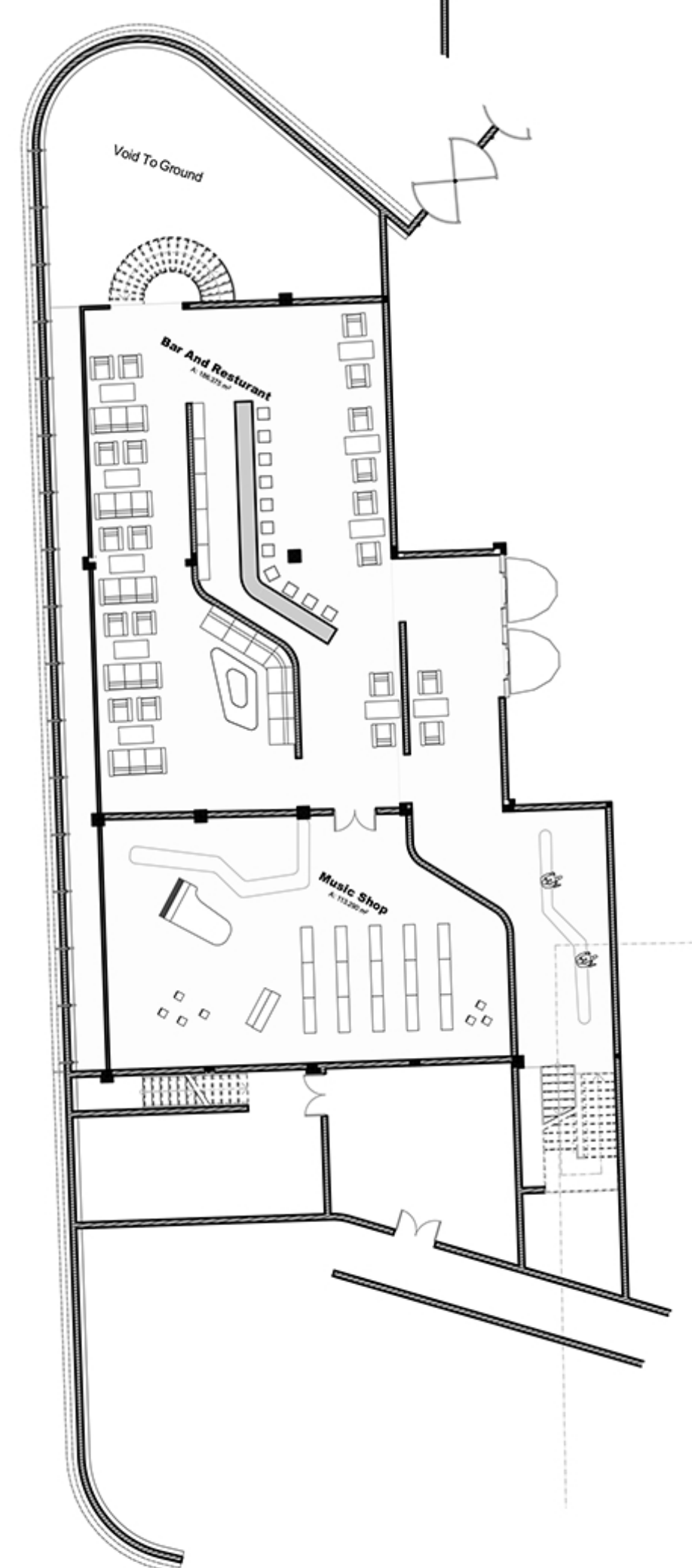




Basement Floor



First Floor



Sec A-A

Sec B-B