

MODULAR BUILDING OF THE PHILHARMONIC

Filling up the Marianske square, we optically close the block of buildings. Proposal opens towards courtyard where we create the frontspace of Philharmony that serves the public from many sides. With concrete surface we give meaning and dignity to our building, we create square. At the back we design park.

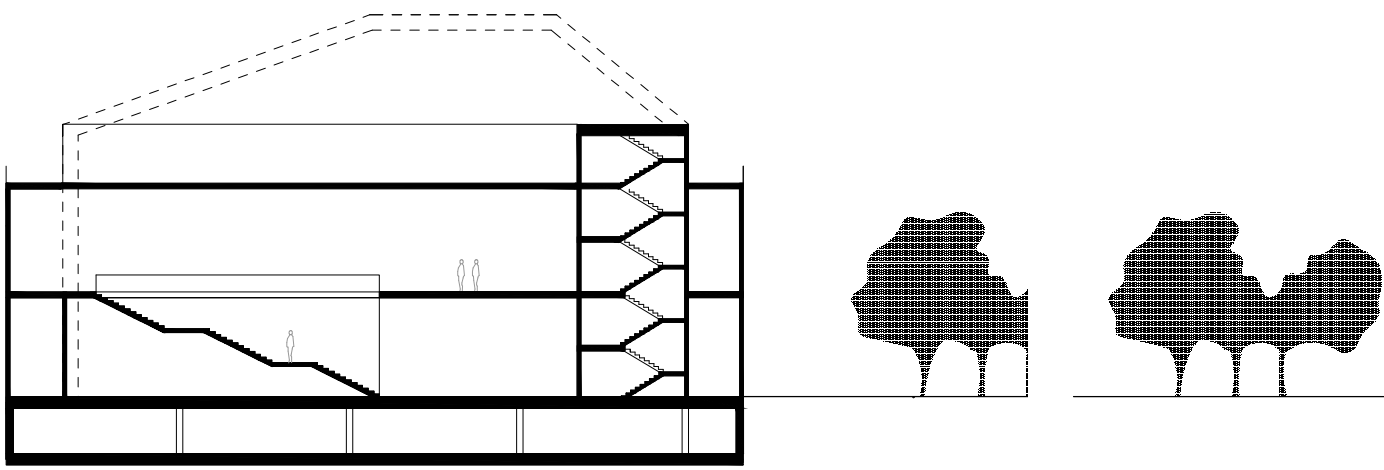
We design philharmony as a Plan Libre, our platform is 5300 m². Utility parts are hidden in separated cells, that are composed into regular modules. Using the module of 3,6 m x 6,9 m we are filling up cells that are used as cloak-rooms, coffee shops, toilets etc. With this we define open space and freedom of movement, where cozy nooks with view of green landscapes are created also as big atriums.

Cells always withdraw from facade by at least one model so the access is free in every part of facade. Light flows through profilits on facade into the building as well as out of it. Shining over its surroundings in night hours. Profilits are used in two upper floors and i in part of roof. Two lower floors are made of glass.

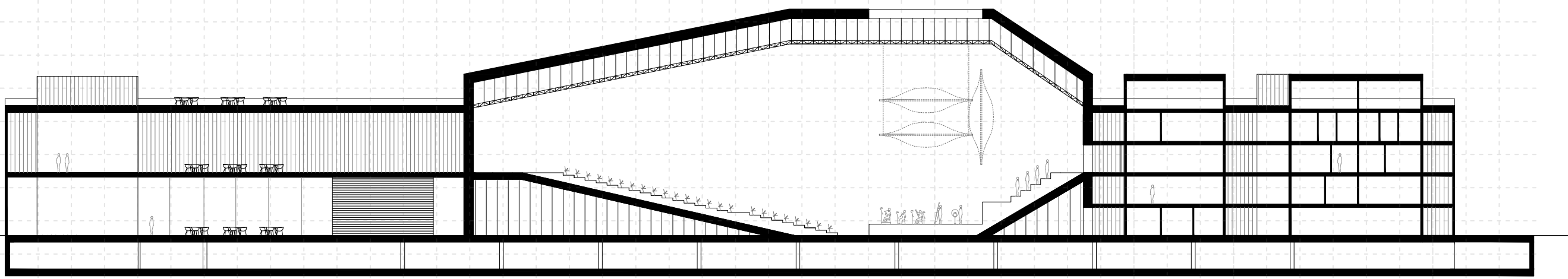
Main auditorium clearly defines the whole shape of a building. We think of it as its heart. It is located in the center of gravity and doesn't respect division of modules. Its shape is created as an accoustic space and its roof is the main character of our philharmony. Thanks to its dismantling possibilities the space can be used also as a dance floor filled up with tables and chairs. Entry is possible from ground floor as well as from the upper floor.

We use roof as an open-air space that has its own social, technical facilities and also a bar. Access for musicians is possible through double-height floor dressing rooms either for play or relax.

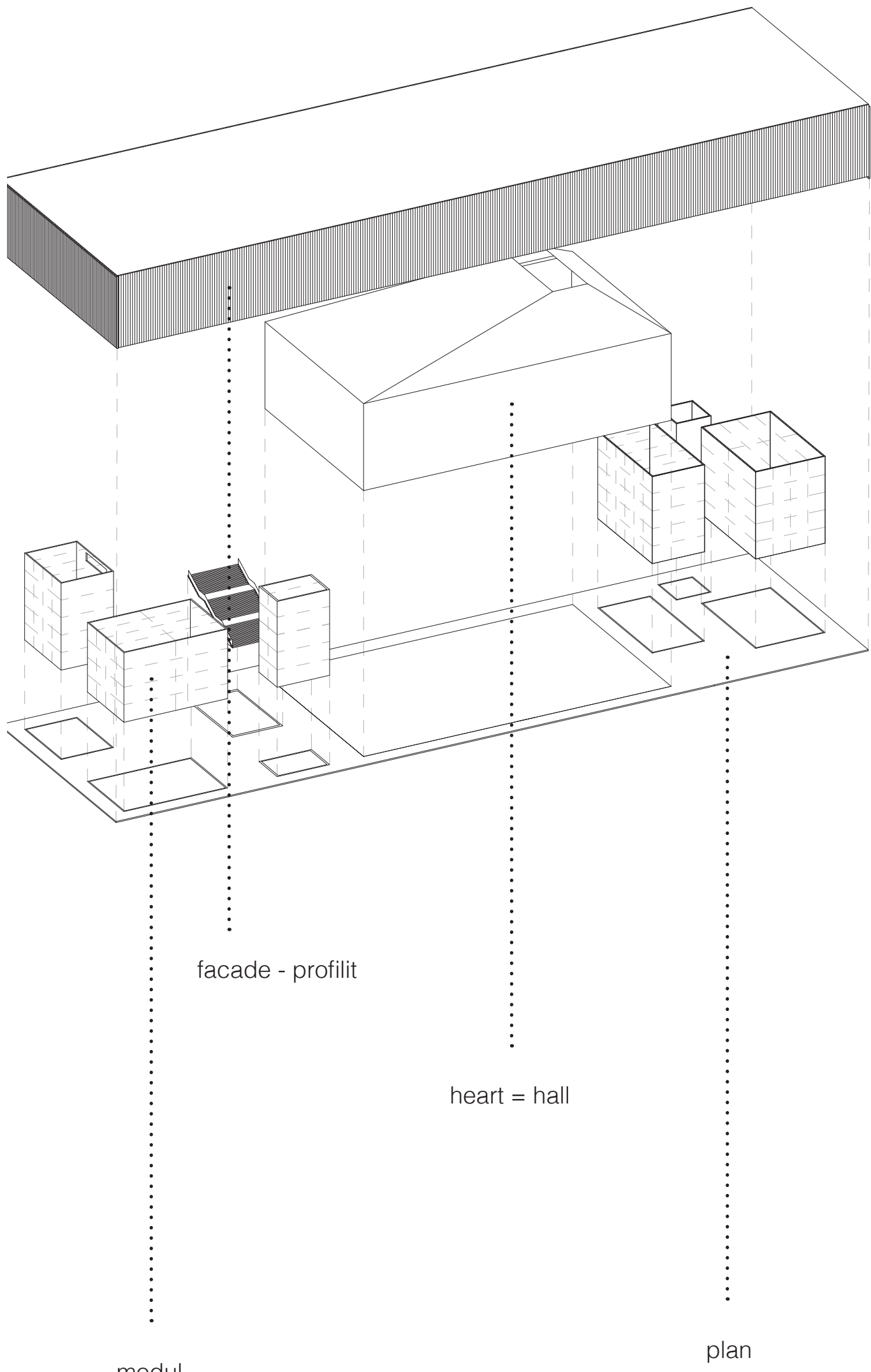




cross section 1:400



longitudinal section 1:400

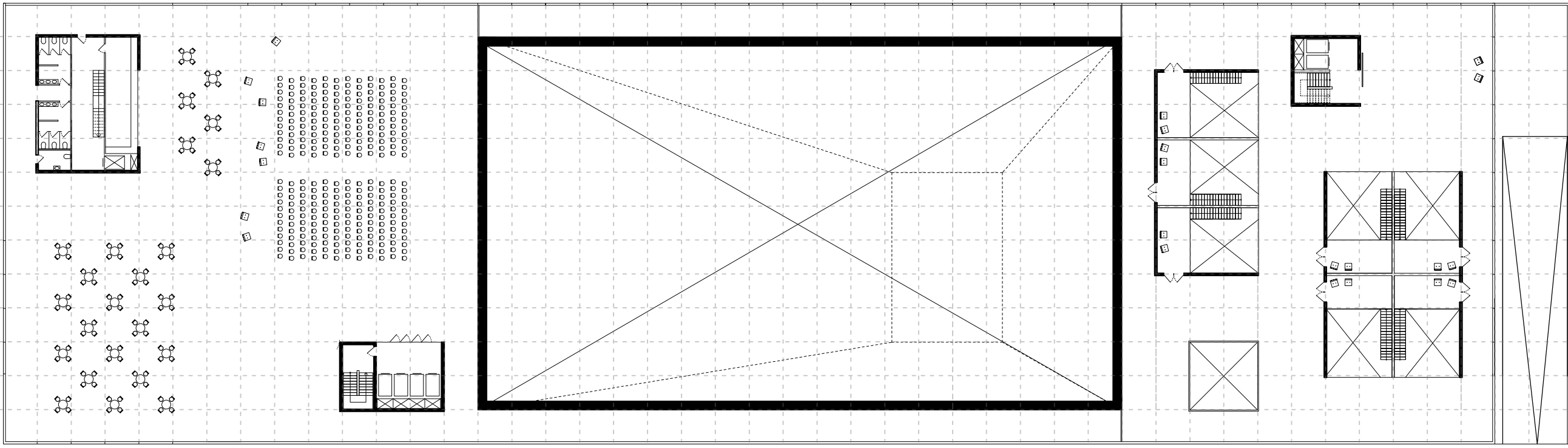


facade - profil

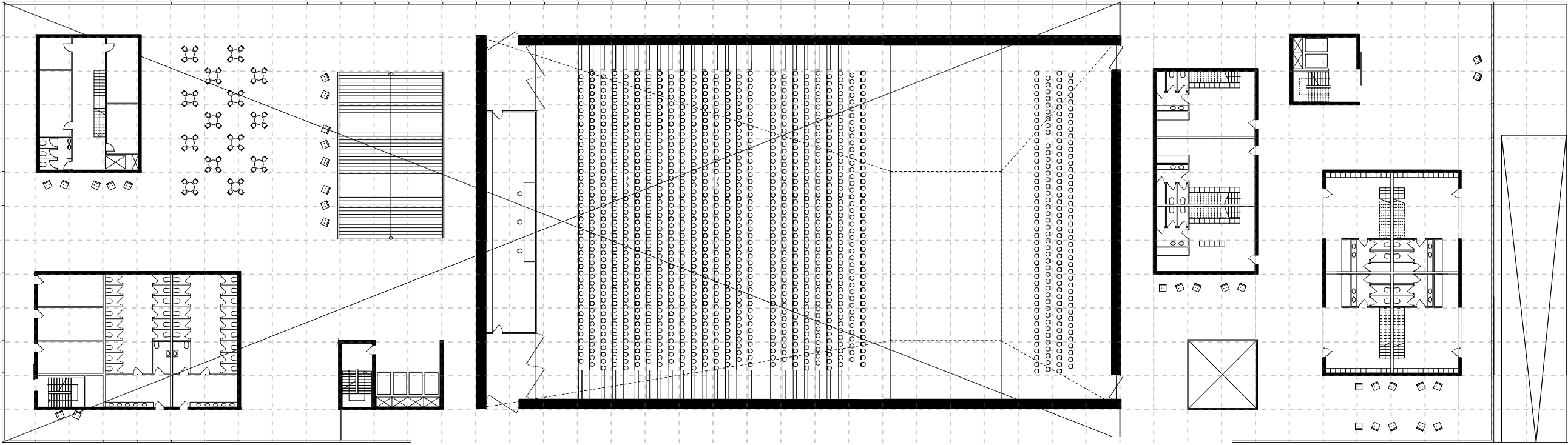
heart = hall

modul

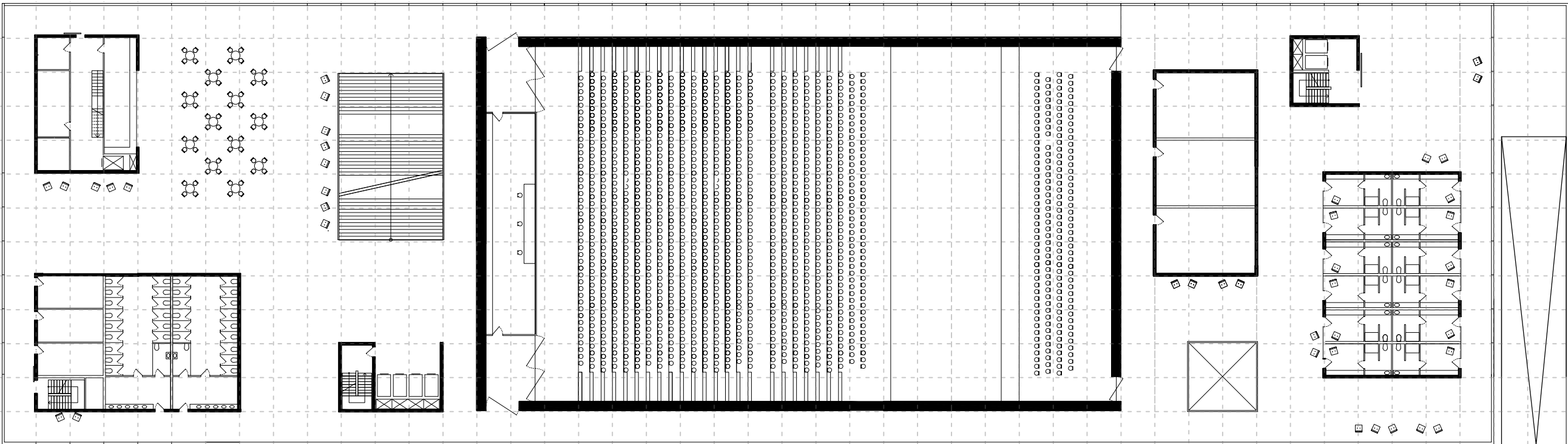
plan



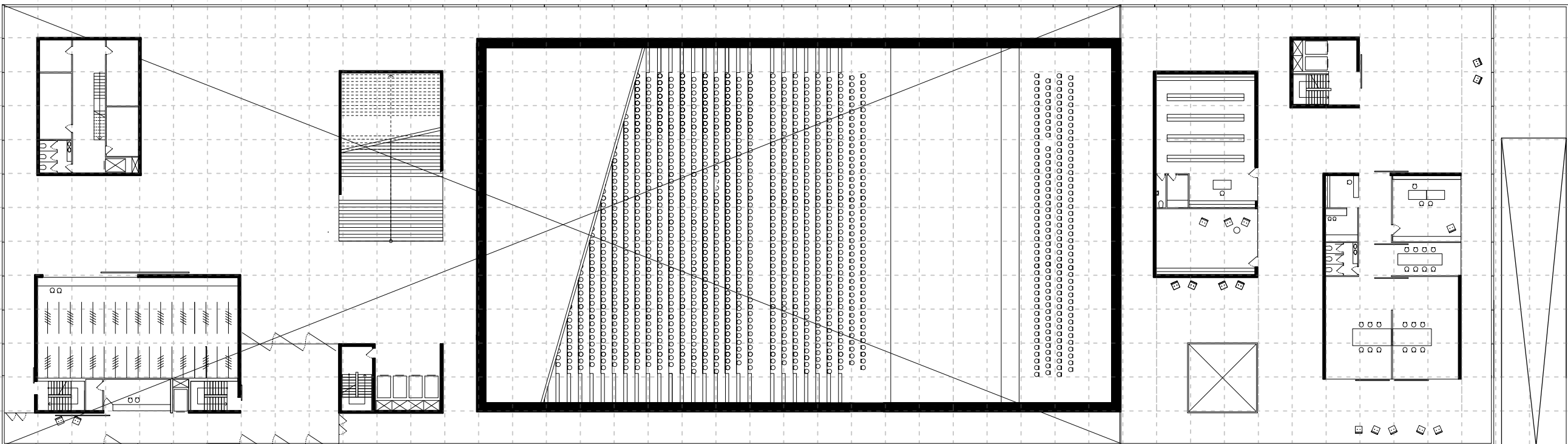
ground plan of 5.storey 1:400



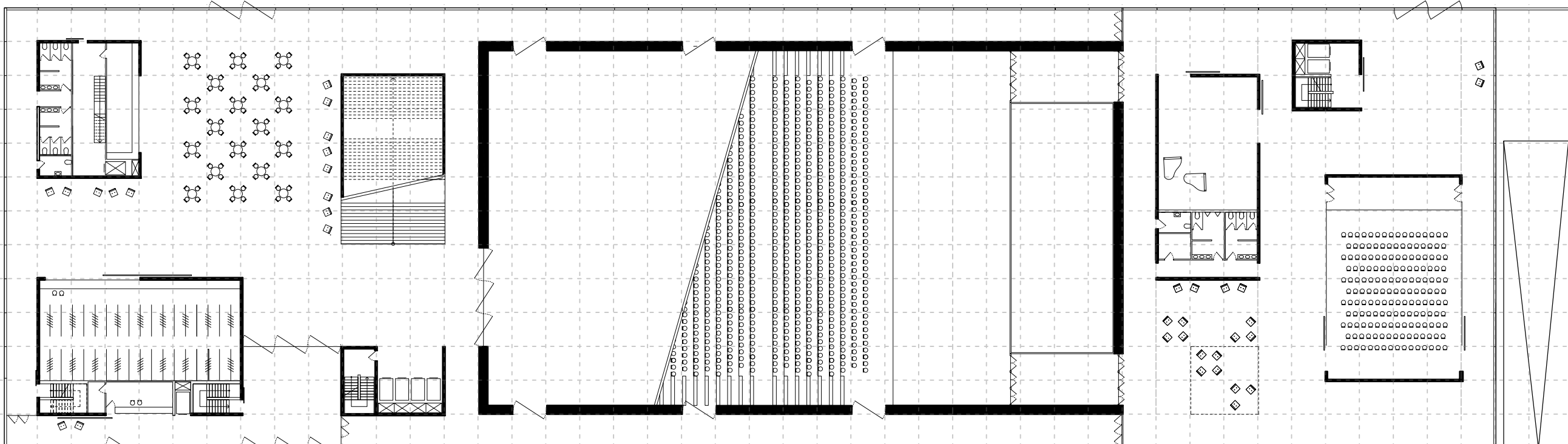
ground plan of 4.storey 1:400



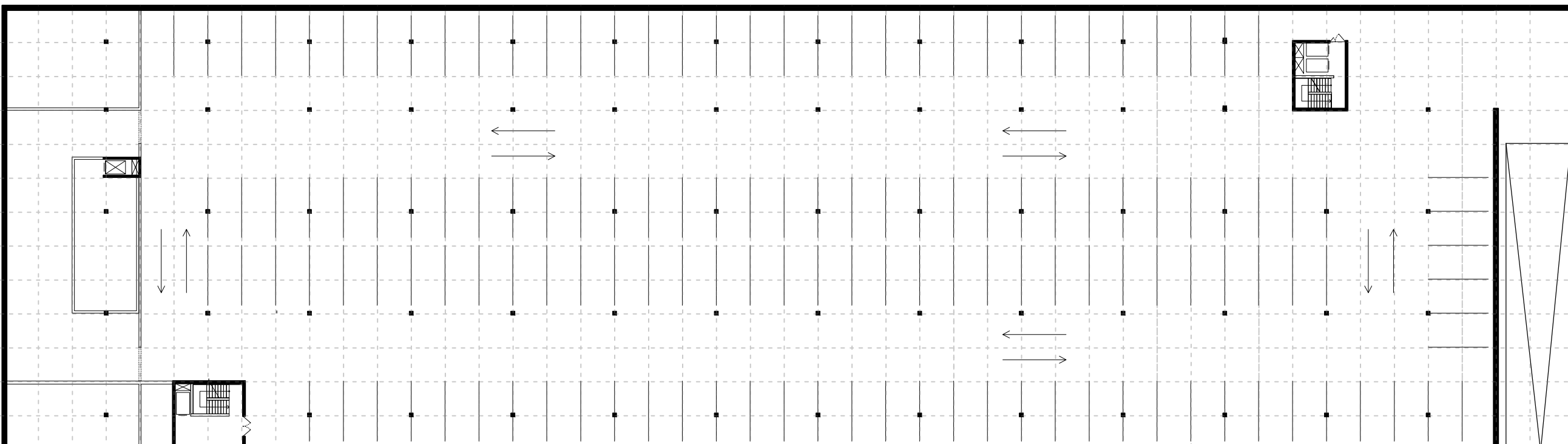
ground plan of 3.storey 1:400



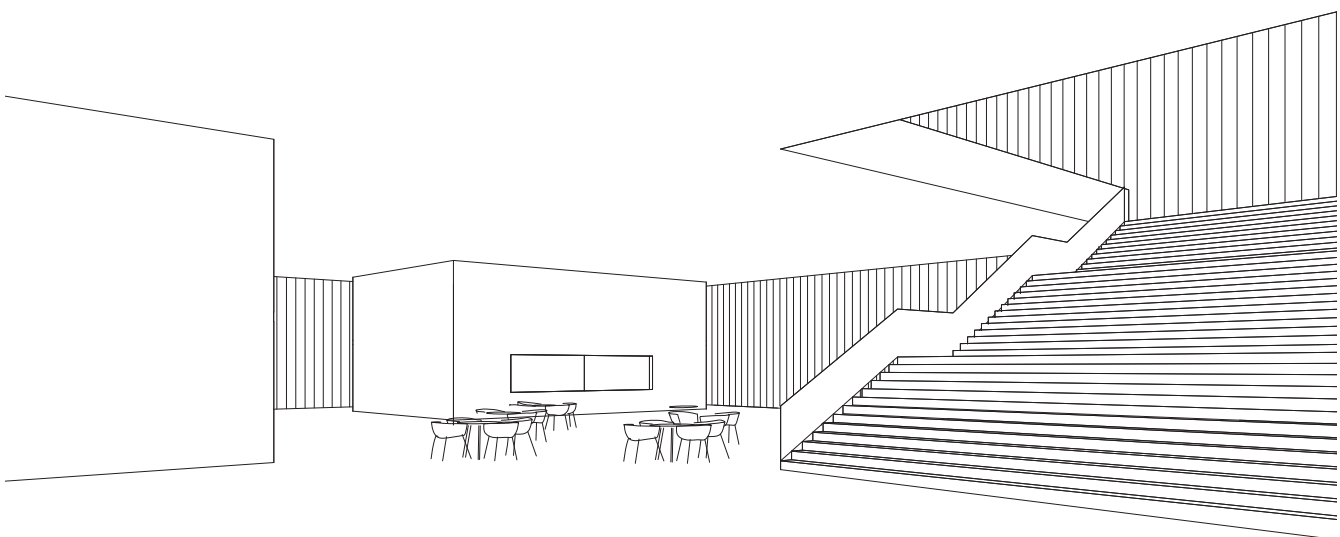
ground plan of 2.storey 1:400



ground plan of 1.storey 1:400



ground plan of basement 1:400



foyer



dancing of the roof