

OBJECTIVE:

THE MAIN OBJECTIVE OF THE DESIGN WAS TO CREATE A MODULAR BUILDING OF THE PHILHARMONIC LOCATED IN ČESKÉ BUDĚJOVICE WHICH, ALTHOUGH INTRODUCES NEW FORMS INTO THE ARENA, AT THE SAME TIME INCORPORATES THE SHAPE AND ARRANGEMENT OF THE SURROUNDING BUILDINGS AND IS IN HARMONY WITH THE NEWLY ACQUIRED FORM OF THE MARIÁNSKÉ NÁMĚSTÍ. THE SQUARE, WITH NEW ROUTES SURROUNDED BY THE GREENERY, IS LEADING THE OBSERVERS TOWARDS THE MAIN ENTRANCE OF THE BUILDING AND IS THERE TO RECLAIM ITS ORIGINAL FUNCTION OF A SQUARE THUS TO SERVE THE CITIZENS.

CONSTRUCTION:

THE FOUR-STORY BUILDING, CREATED FULLY FROM THE MODULES KOMA, TYPE COMFORT, MEASUREMENTS: 9,0 M X 3,6 M X 3,4 M, IS FORMED BY TWO CUBOIDAL SOLIDS WHICH ARE JOINED TOGETHER. THE CONSTRUCTION OF THE MODULES ALLOWS FLEXIBILITY OF THE DESIGN AND SPACE WITHIN. ON THE STOREY LEVEL MINUS ONE (-1) THERE IS A CAR PARK, WHICH SIZE ALLOWS STORAGE OF CONSIDERABLE NUMBER OF VEHICLES. ON THE MINUS ONE STOREY THERE IS ALSO A SPACIOUS STOREROOM FOR LARGE MUSICAL INSTRUMENTS CONNECTED WITH THE CONCERT HALL BY AN ELEVATOR, WHICH ALLOWS FAST AND COMFORTABLE TRANSPORT. THE STORAGE SPACE IS DESIGNED TO ENABLE CONSERVATION AND TUNING OF THE INSTRUMENTS, BY HAVING FAVOURABLE HUMIDITY CONDITIONS.

FORM:

THE BUILDING IS FORMED BY TWO CUBOIDAL SOLIDS, WHOSE CLEAR FORM IS CORRESPONDING WITH SIMPLE TO READ PLAN AND ALLOWS FOR A SENSE OF DIRECTION WITHIN. IRREGULAR CONFIGURATION OF VERTICAL CERAMIC PANELS ON THE ELEVATION WERE INTRODUCED AS TO HUMANIZE THE SCALE OF THE BUILDING'S CAPACITY.

FROM THE 28. ŘÍJNA 1595 STREET, THE BUILDING IS JOINED WITH THE POLICE STATION'S BUILDING BY THE OPENWORK, DECORATIVE WALL, WHICH CONTINUES THE MOTIVE OF VERTICAL CERAMIC PANELS, AS TO CREATE CONTINUITY WITH THE FRONTAGE.

THE MAIN ENTRANCE IS LOCATED IN THE BIGGER SOLID, FROM THE MARIAN SQUARE SIDE, GATHERING ALL THE PUBLIC FROM EVERY SIDE OF THE SQUARE. THE ENTRANCE HALL, SPRAWLING THROUGH TWO STOREYS IS FLANKED BY LIFTS WHICH ALLOW, TOGETHER WITH THE STAIRS, TO CHANGE STOREYS.

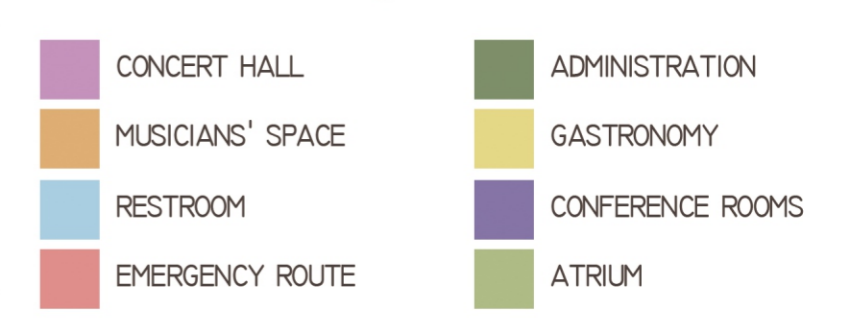
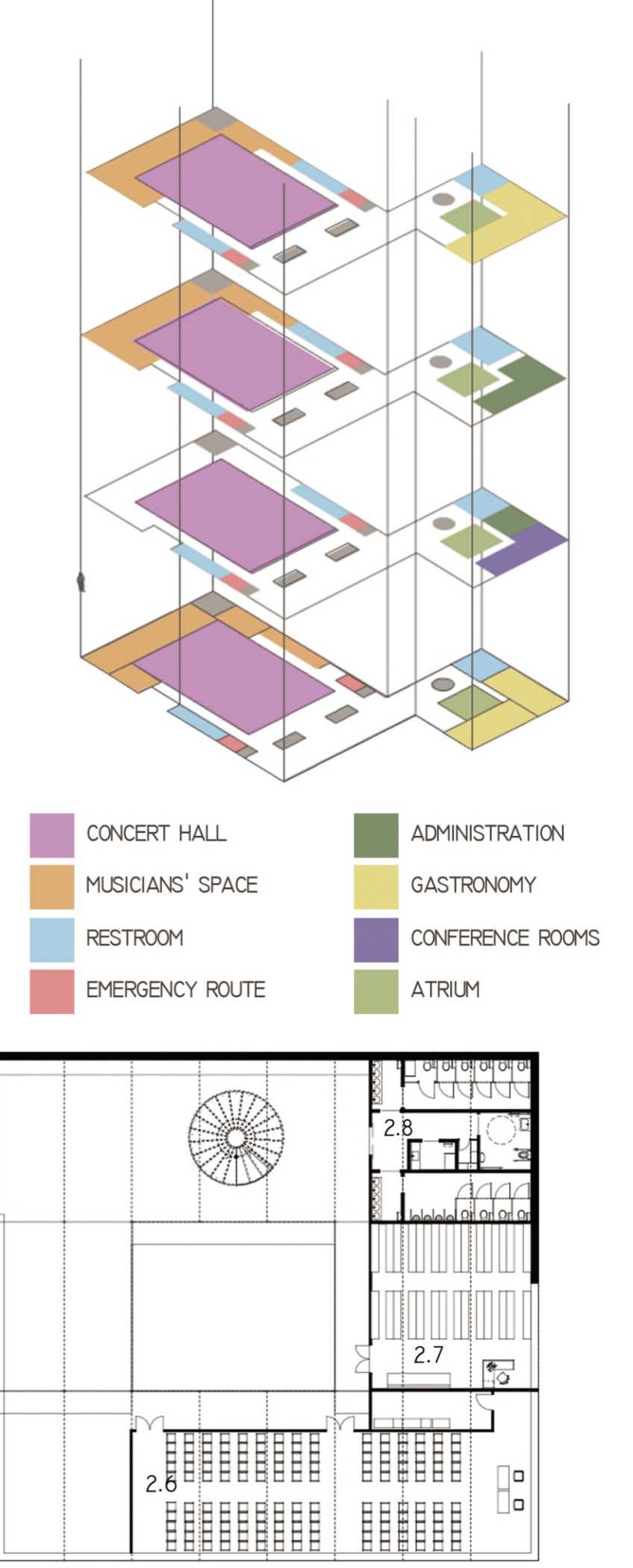
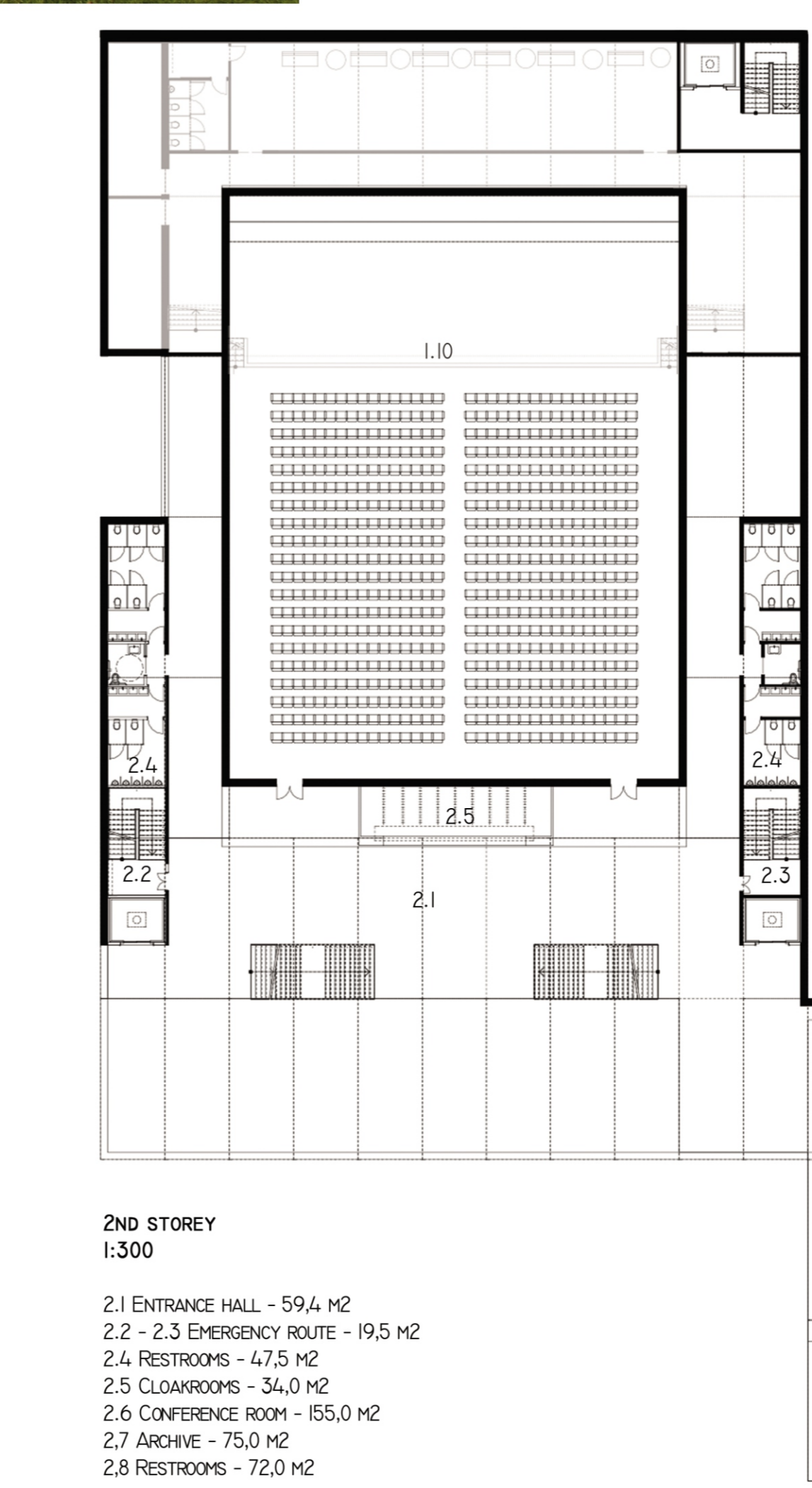
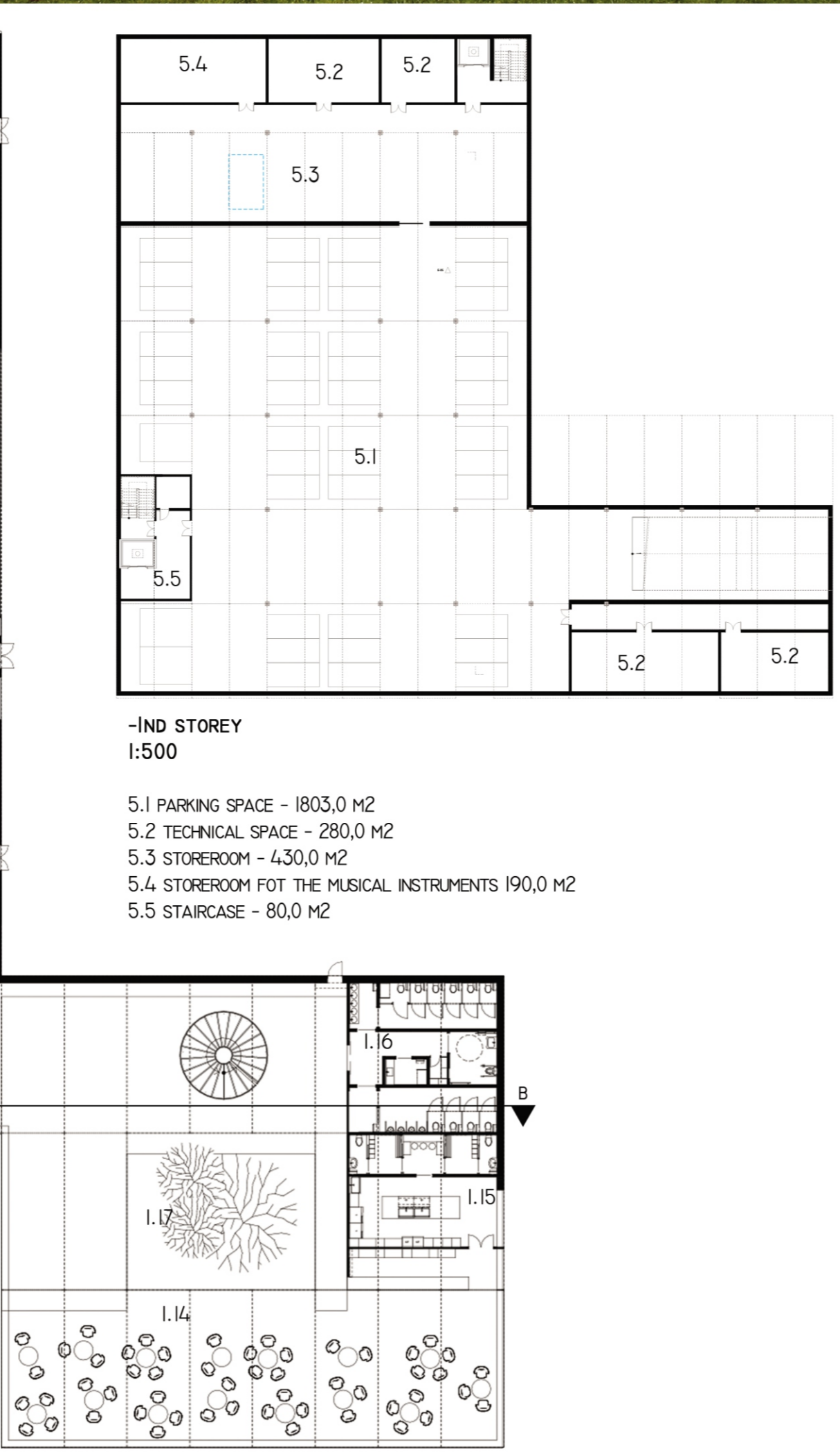
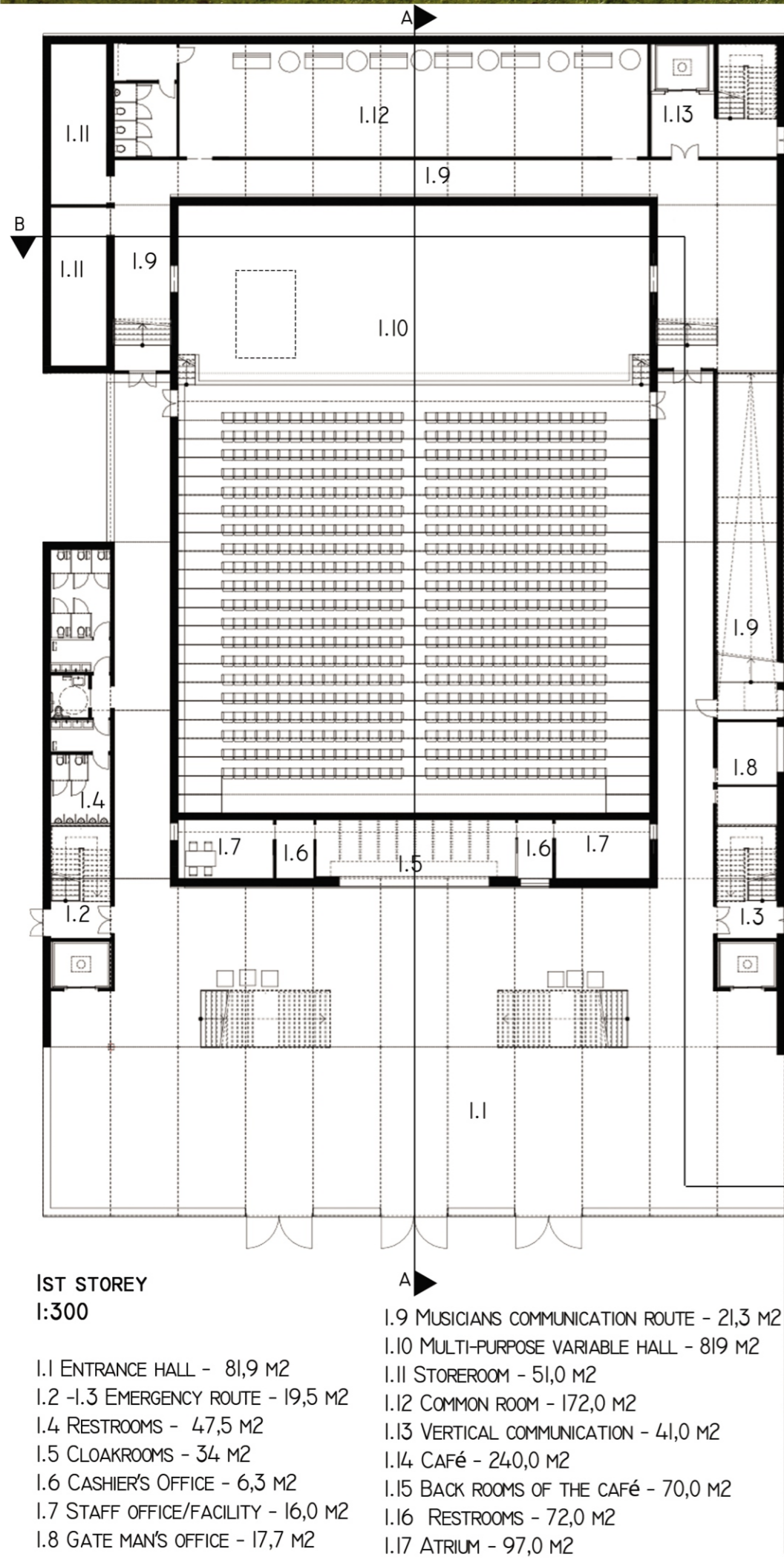
IN THE BIGGER SOLID, ORIENTED WEST, THERE IS LOCATED A MULTI-PURPOSE VARIABLE HALL (WHICH TOOK THE FORM OF A CONCERT HALL), SPRAWLING FROM THE FIRST TO THE FOURTH STOREY. THE CONSTRUCTION OF THE CHAIRS ALLOWS THEM TO BE FOLDED AND STORED IN A SMALL SPACE (MEASUREMENTS: 1,7 M IN LENGTH AND 7,0 M IN HEIGHT). AROUND THE HALL ON THE GROUND FLOOR (1 STOREY), THERE IS SITUATED SPACE FOR THE PUBLIC, FROM THE FIRST TO THE THIRD FLOOR (2ND - 4TH STOREY) ARE CLOAKROOMS AND FACILITIES FOR THE MUSICIANS WITH SOUND ROOM ON THE HIGHEST STOREY, CLOSE TO THE MULTI-PURPOSE VARIABLE HALL.

IN THE SMALLER SOLID THERE ARE LOCATED GASTRONOMY UNITS (FIRST AND FOURTH STOREY), CONFERENCE ROOMS ON THE SECOND, ADMINISTRATION OFFICES ON THE THIRD, ALL OF THE STOREYS HAVE RESTROOMS FOR THE PUBLIC. THE CAFE LOCATED ON THE FIRST STOREY IS CONSIDERABLY SMALLER THAN THE ONE LOCATED ON THE FOURTH, AND IS ASSIGNED TO ASSIST THE PUBLIC ON DAILY BASIS. IN THE CAFE THERE IS ALSO A SHOP IN FORM OF A STALL. ONE THE FIRST STOREY THERE IS A REPRESENTATIVE SPIRAL STAIRCASE WHICH SERVES AS BOTH - COMMUNICATION AND DECORATION. THE RESTAURANT ON THE HIGHEST STOREY HAS TWO FUNCTIONS: TO SERVE THE MUSICIANS AND ADMINISTRATION BY DAY, AND ALSO PUBLIC BY NIGHT. THE CONFERENCE ROOM ON THE SECOND STOREY COULD BE DIVIDED INTO TWO SMALLER ROOMS IF NEEDED. THE SPACE HAS BEEN DESIGNED TO SERVE AS A LECTURE HALL, CONFERENCE OR STUDY ROOMS FOR THE AUDIENCE INTERESTED IN MUSIC.

IN THE CENTRE OF THE SOLID, SPRAWLING FOR THREE MODULES IN WIDTH, ONE IN LENGTH AND FOUR IN HEIGHT IS AN ATRIUM, WHICH PROVIDES GREENERY FOR THE PLEASURE OF THOSE INSIDE. WHAT IS MORE, ON ONE SIDE OF THE SMALLER SOLID, SPRAWLING THROUGH ALL THE STOREYS AND ON THE FOURTH STOREY OF THE BIGGER SOLID, ABOVE THE ENTRANCE HALL, IS A VIEWING AREA WITH A BEAUTY SPOT STRETCHING TOWARDS THE CITY HALL, ALLOWING THE OBSERVERS TO DELIGHT IN THE BEAUTIFUL VIEW OF THE OLD TOWN.

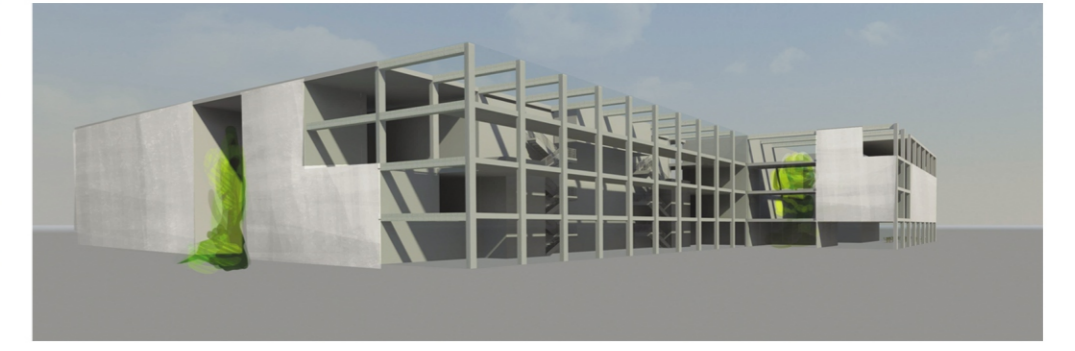
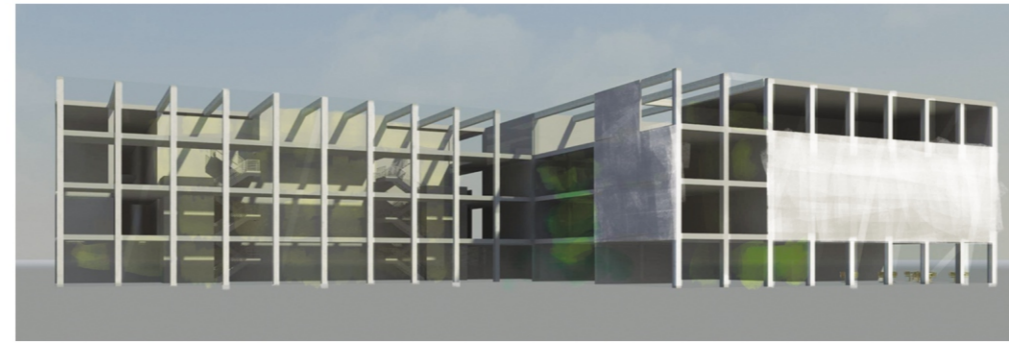


CRATIVE SKETCHES

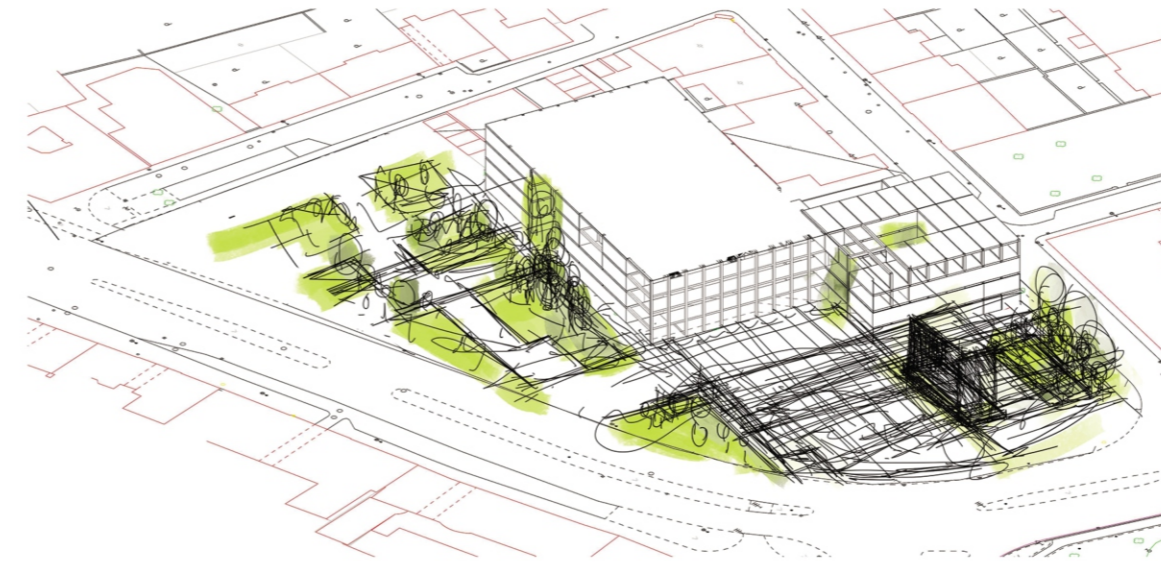




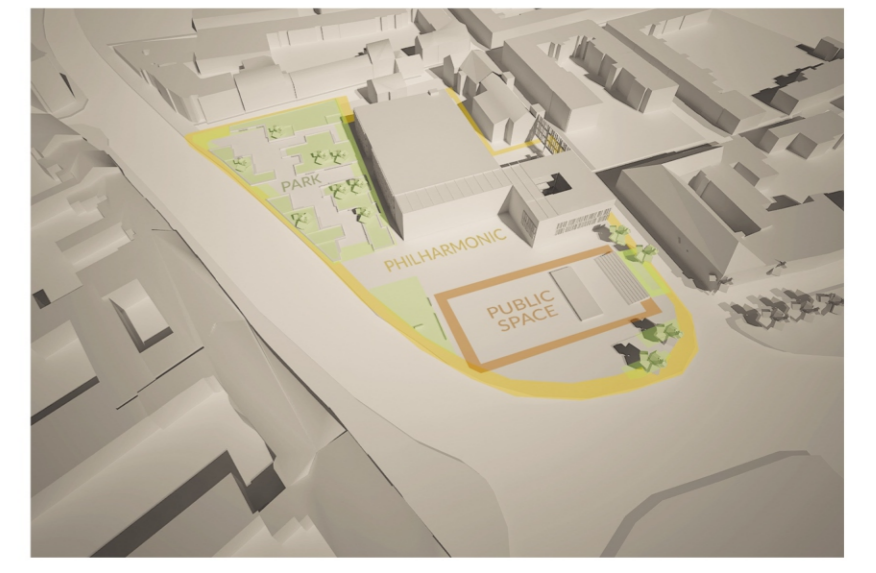
IDEOGRAPHS



FIRST DRAFTS OF THE BUILDING IN 3D



AXONOMETRY WITH THE DRAFTS OF THE GREENERY

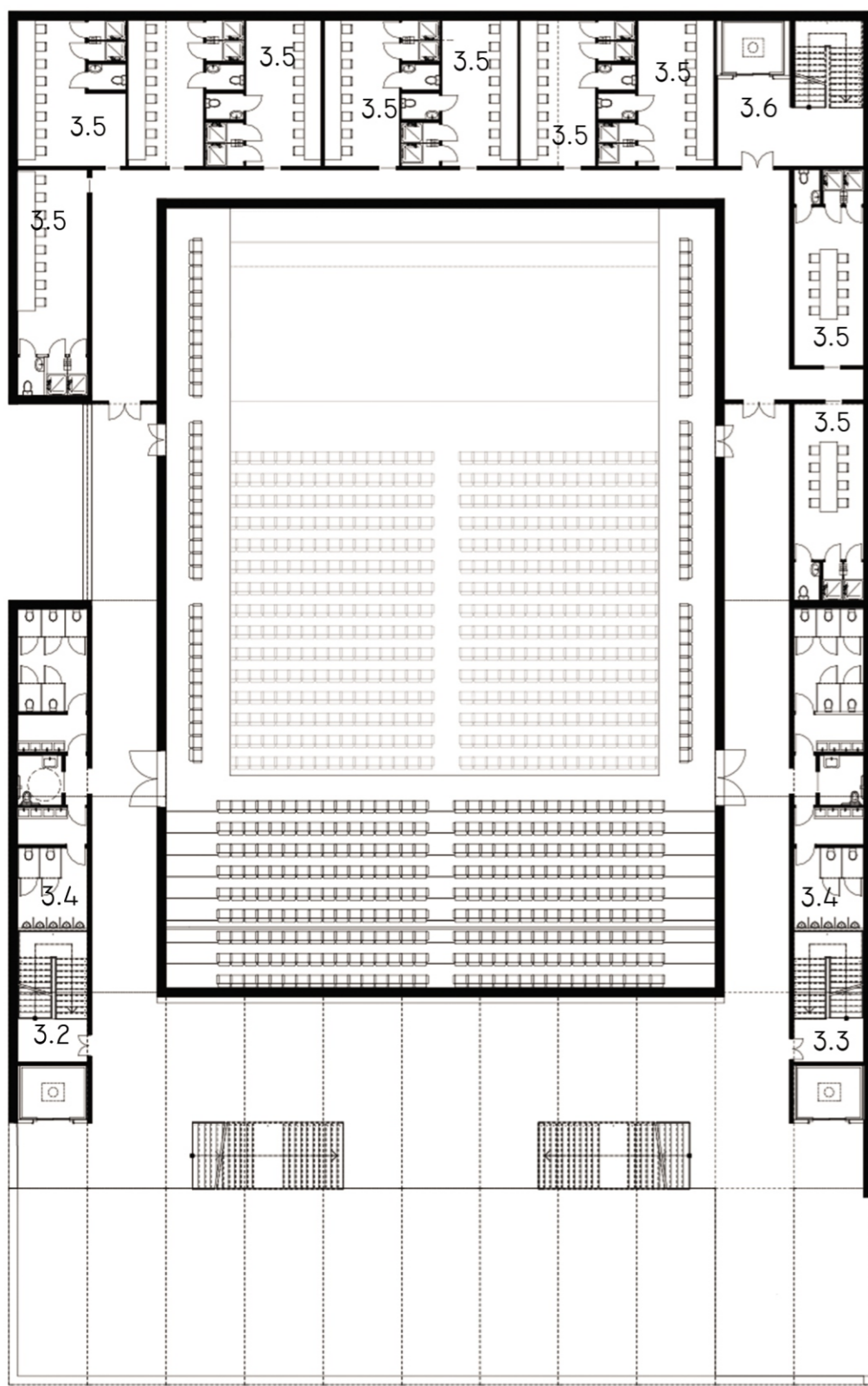


URBAN SCHEMA IN 3D



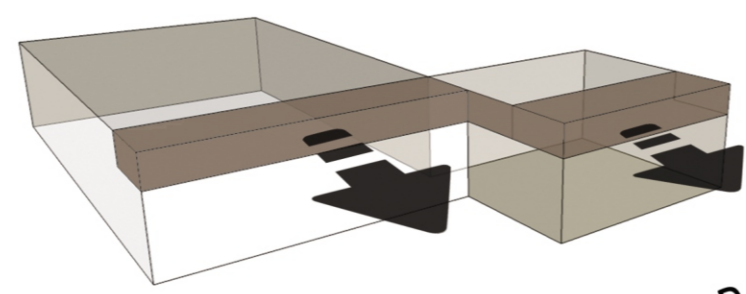
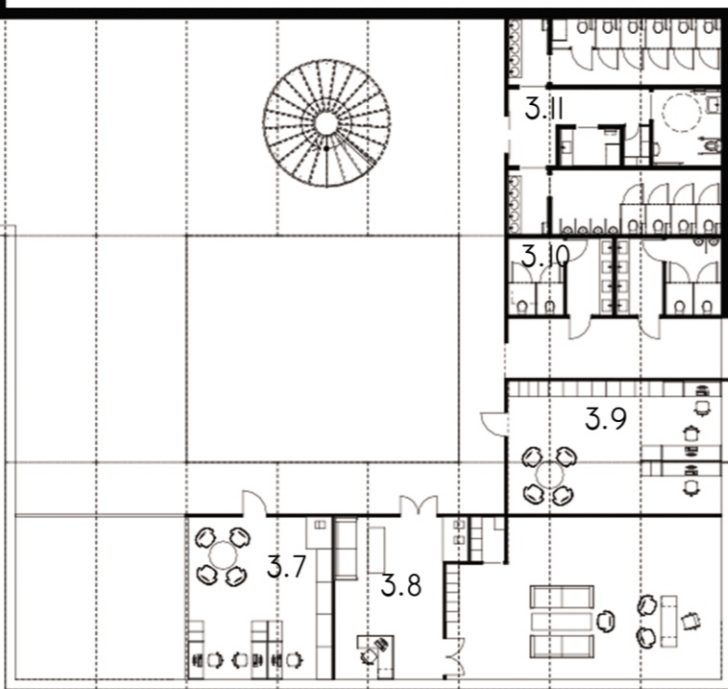
FORDING SEATING SCHEMA

SCENE



3RD STOREY
1:300

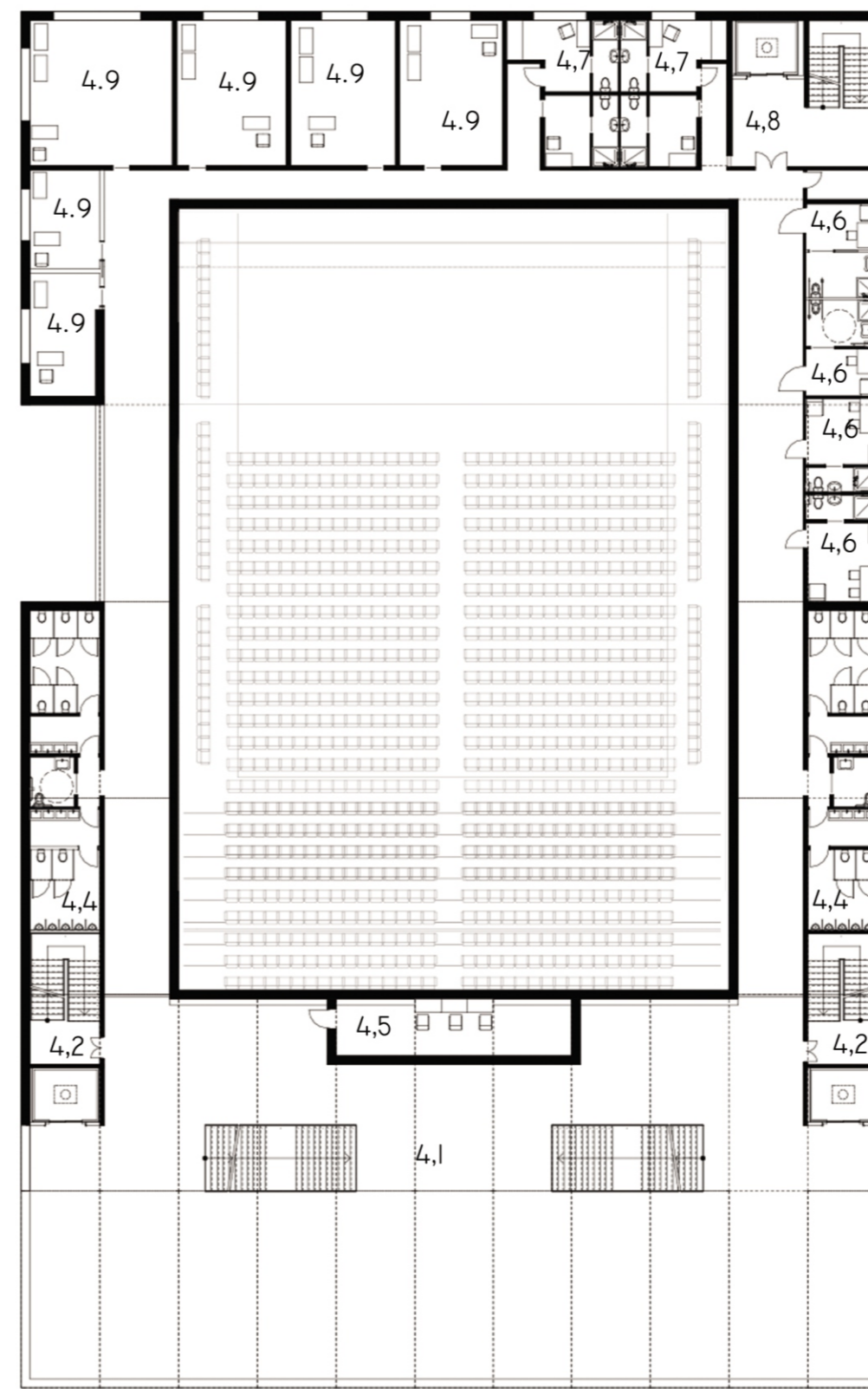
- 3.1 ENTRANCE HALL - 59,4 M2
- 3.2 - 3.3 EMERGENCY ROUTE - 19,5 M2
- 3.4 RESTROOMS - 47,5 M2
- 3.5 CLOAKROOMS FOR THE MUSICIANS ON AVERAGE - 32 M2
- 3.6 VERTICAL COMMUNICATION - 41,0 M2
- 3.7 OFFICE NO.1 - 37,0 M2
- 3.8 DIRECTOR AND ASSISTANT'S OFFICE - 45,0 M2
- 3.9 OFFICE NO. 2 - 45,0 M2
- 3.10 RESTROOMS FOR THE EMPLOYEES - 25,8 M2
- 3.11 RESTROOMS - 72,0 M2



VIEWING AREA WITH A BEAUTY SPOT DIRECTED TOWARDS THE OLD TOWN

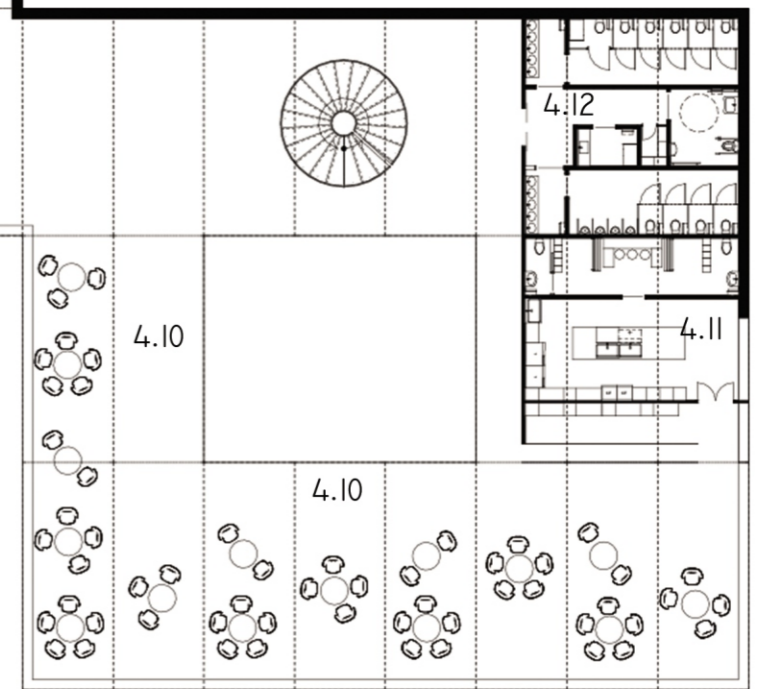
OLD TOWN

IN THE BOTH SOLIDS THERE IS A VIEWING AREA WITH A BEAUTY SPOT STRECHING TOWARDS THE CITY HALL, ALLOWING THE OBSERVATORS TO ENJOY THE STUNNING VIEW OF THE OLD TOWN FROM A PROPER HEIGHT.



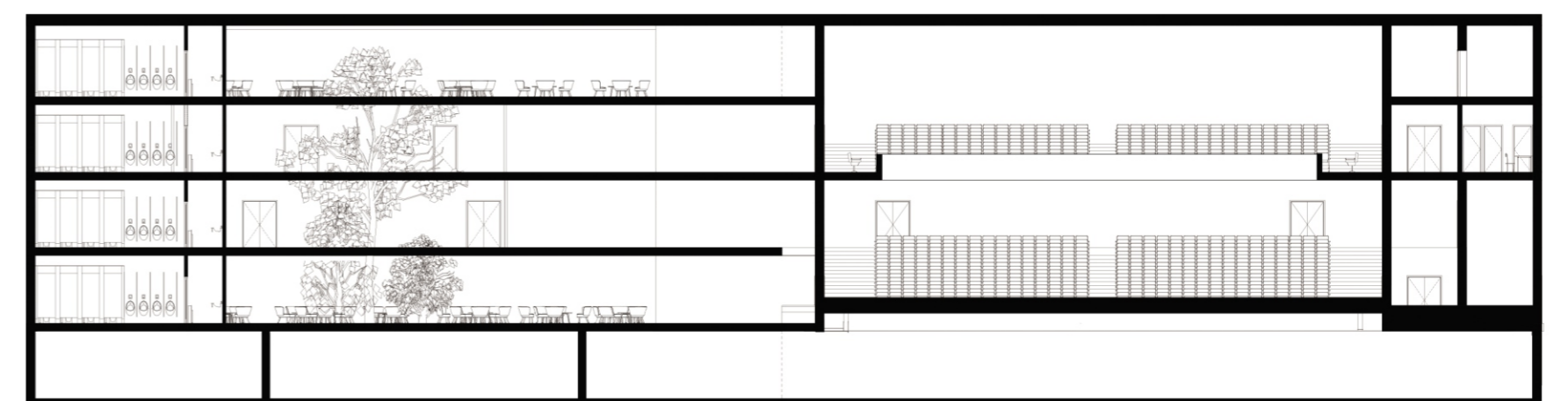
4TH STOREY
1:300

- 4.1 HALL AND VIEWING AREA - 830 M2
- 4.2 - 4.3 EMERGENCY ROUTE - 19,5 M2
- 4.4 RESTROOMS - 47,5 M2
- 4.5 SOUND ROOM - 28,0 M2
- 4.6 CLOAKROOM ON AVERAGE - 15,0 M2
- 4.7 CLOAKROOM ON AVERAGE - 14,0 M2
- 4.8 VERTICAL COMMUNICATION - 41,0 M2
- 4.9 REHEARSAL ROOMS/ PRACTICE ROOMS - ON AVERAGE 29,0 M2
- 4.10 RESTAURANT - 304,0 M2
- 4.11 BACK ROOMS OF THE RESTAURANT - 70,0 M2
- 4.12 RESTROOMS - 72,0 M2



EXTERIOR FORM

SHAPE OF THE PLAN OF A BUILDING ALLOWS TO ENJOY THE VAST SPACE OF THE MARIAN SQUARE. THE DESIGN INVOLVES THE LANDSCAPE DESIGN OF THE PHILHARMONIC SURROUNDINGS BY INTRODUCING GREENERY WHICH WILL SERVE AND STIMULATE THE CITIZENS. IN ONE CORNER OF THE SQUARE THERE IS AN OPEN AIR STAGE WITH URBAN STAIRS WHICH WILL BE USED IN WARM SEASONS AND WHICH WILL HOPEFULLY SERVE AS AN INCENTIVE FOR THE PUBLIC.



MODULARCH

Leave Empty

11WXX