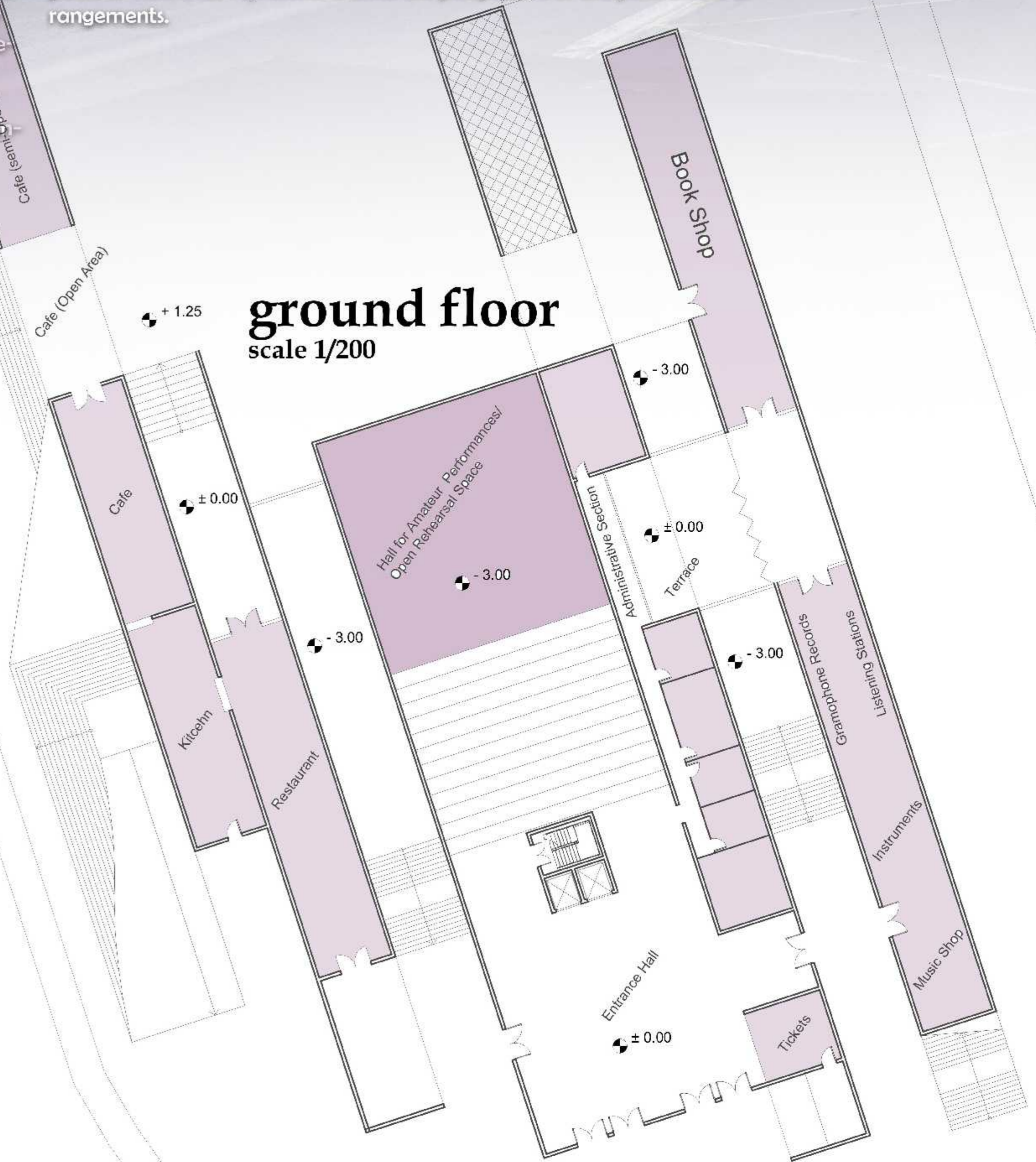
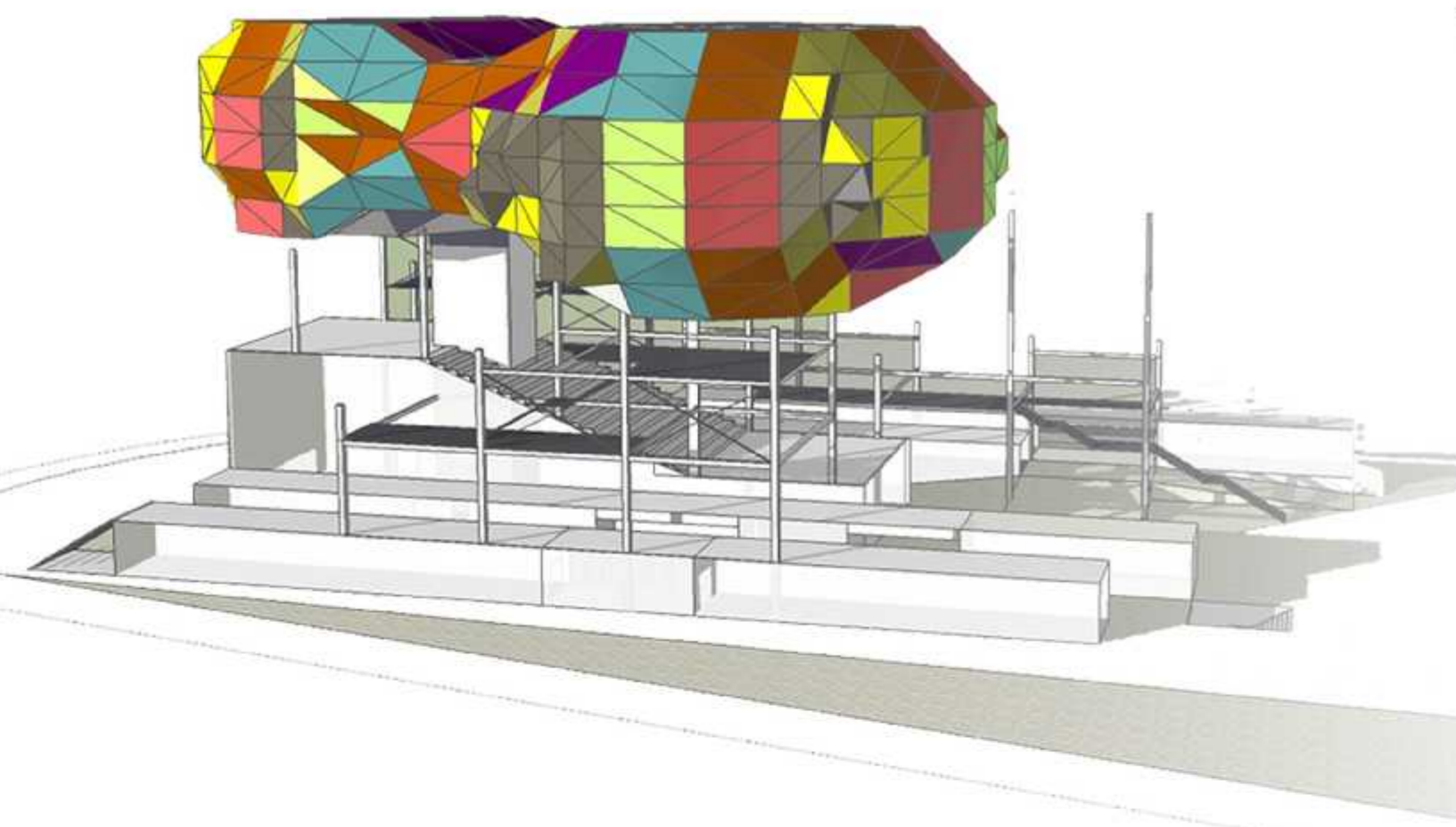


## Spaceship Vs Fort

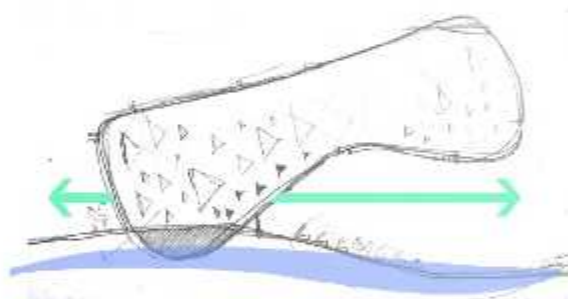
The common picture of Concert Hall or Opera House, for many years, was elegant, giant and stony buildings with small openings that enclosed the inside activities and events. In other words Concert Hall was a Fort that kept music inside like a treasure belonging only to the social elite; and the Classical music itself, was long considered as a symbol of nobility and the cultural product of the very social class. In contrast, Spaceship with its modest and colorful appearance opens itself to the whole city. Spaceship provides everyday experience like folk dance and music, observing the city through its high open air platforms, enjoying a hot coffee and communication. But all the activities are aligned with our musical purpose. People, open gates and facilities motivate ordinary people and naturally help them become more familiar with music. Speaking of professional music, the spaceship provides spaces for performing music in public and above all, Classical music is played over the city of České Budějovice. Everything motivates people to join the spaceship to explore the realm of music. For instance, transparent parts of the façade, reveal inside activities and people, such as the staff moving instruments from storage to the stage or people attending to the music in the concert hall, and attracts people in an urban scale.

## Timing Vs Detiming

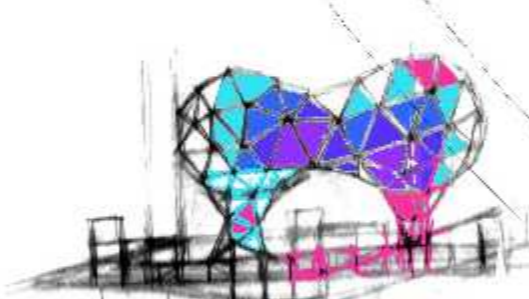
Spaceship has been made with limited numbers of modules. Triangle shaped modules rotate, mirror and combine to each other and form a complex system. The same system exists in music; with combination of only seven notes, abundant numbers of sounds are produced. In music sequence of notes could be understood in the lapse of the time. As in architecture the sequence of scenes could be understood in a same context. In both systems in a deeper and detimized layer, complex relationships could be followed without considering sequences. Employing this perspective, every single note in a melody finds its own place in relationship with other notes. The same approach in the architecture could be found; every place in architectural space has its own position and can redefine the space from its very own point of view that represents a different perspective of the permanent arrangements.



## Major Concepts



Place of music expresses itself  
Urban context is part of the elevation  
People are part of the elevation



Colors  
colorful building would be  
what a misty weather needs



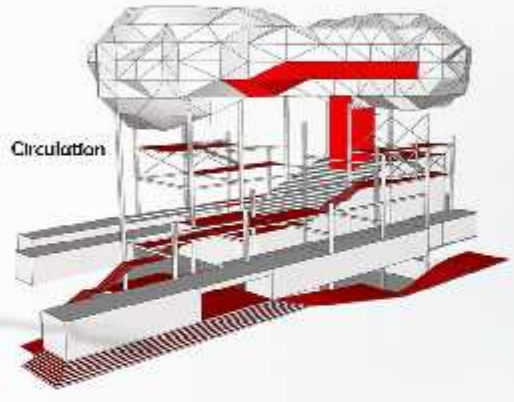
Structural Modules  
hold the floating concert hall and provide  
open air public space in different levels



Floating Spaceship on Voltava  
Concert hall floats on Voltava expressing itself in the city

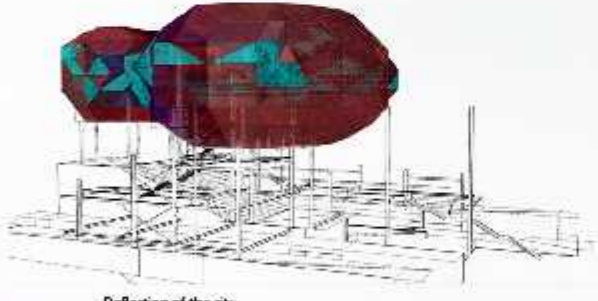


Open air stage  
Urban stage activity

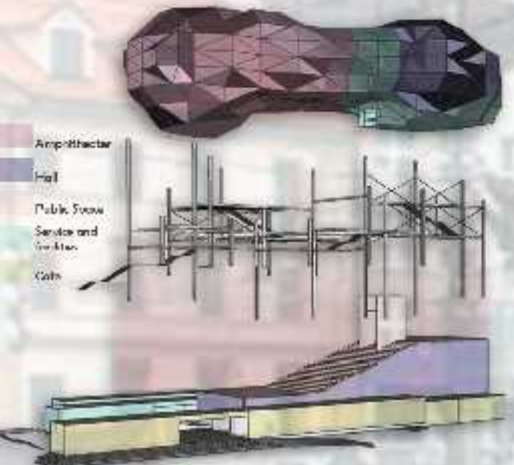


Circulation

## Urban concerns



Reflection of the city

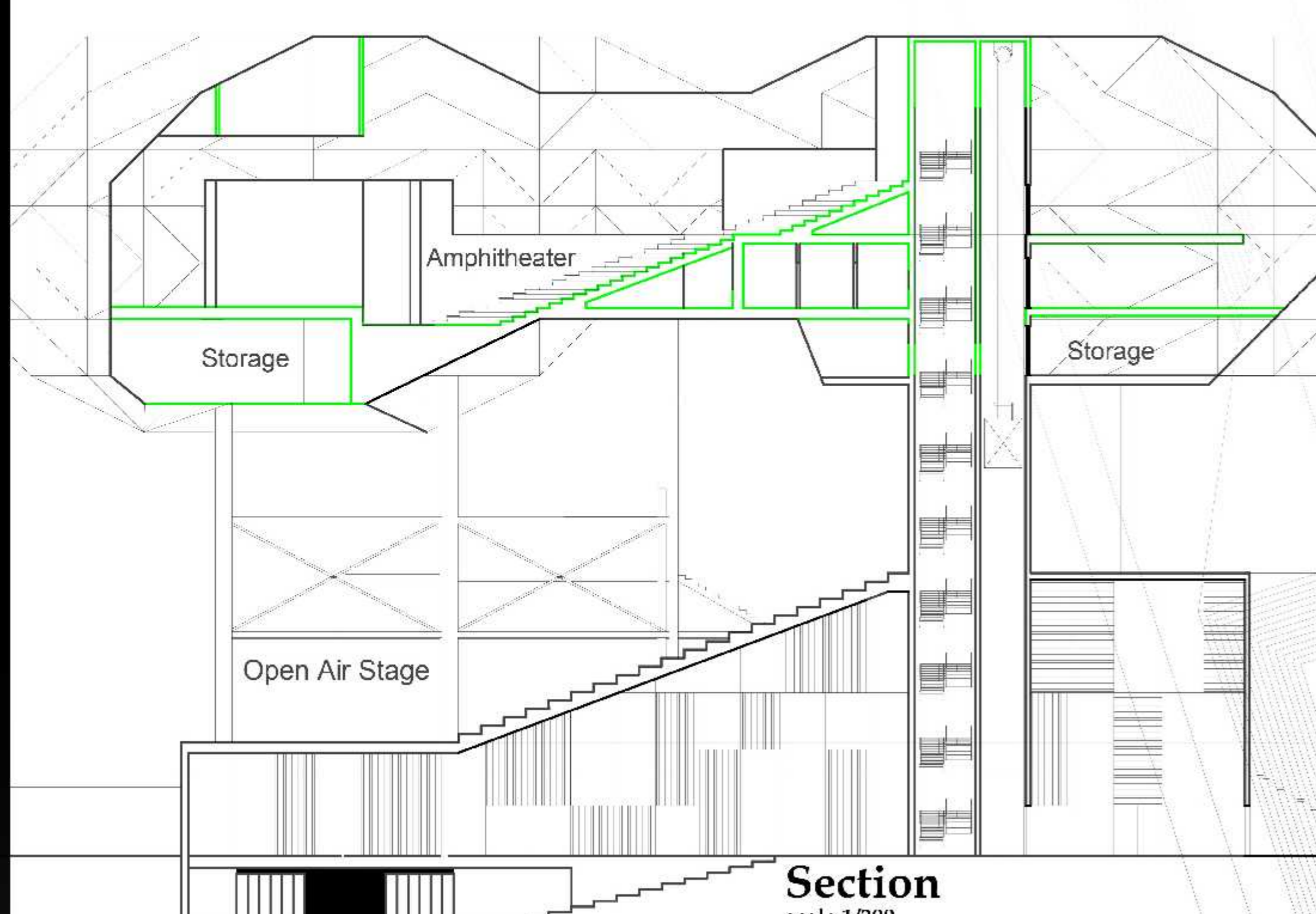
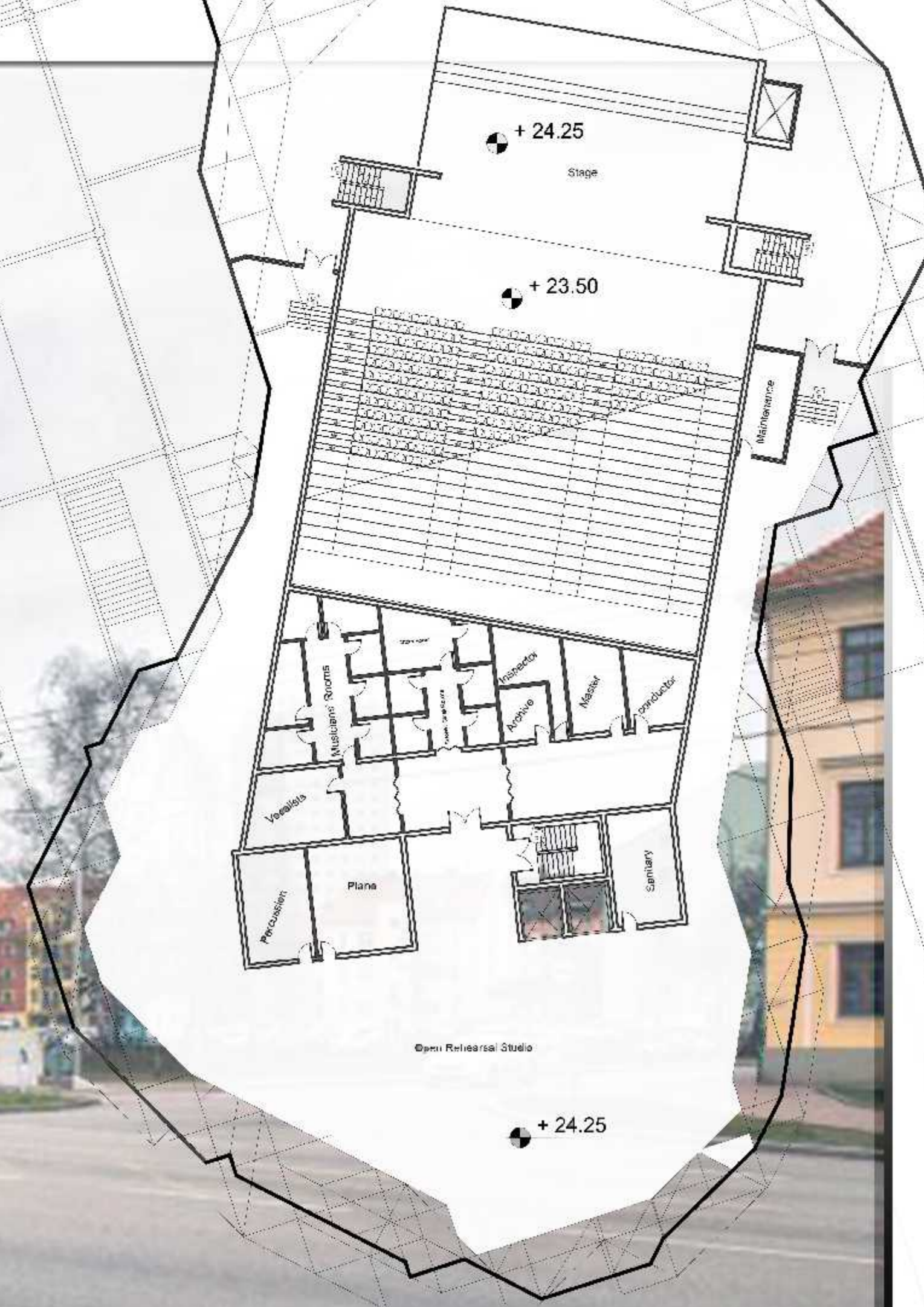


Functions  
Open air spaces  
People as part of the elevation that attracts people

Local architecture is part of the elevation skyline

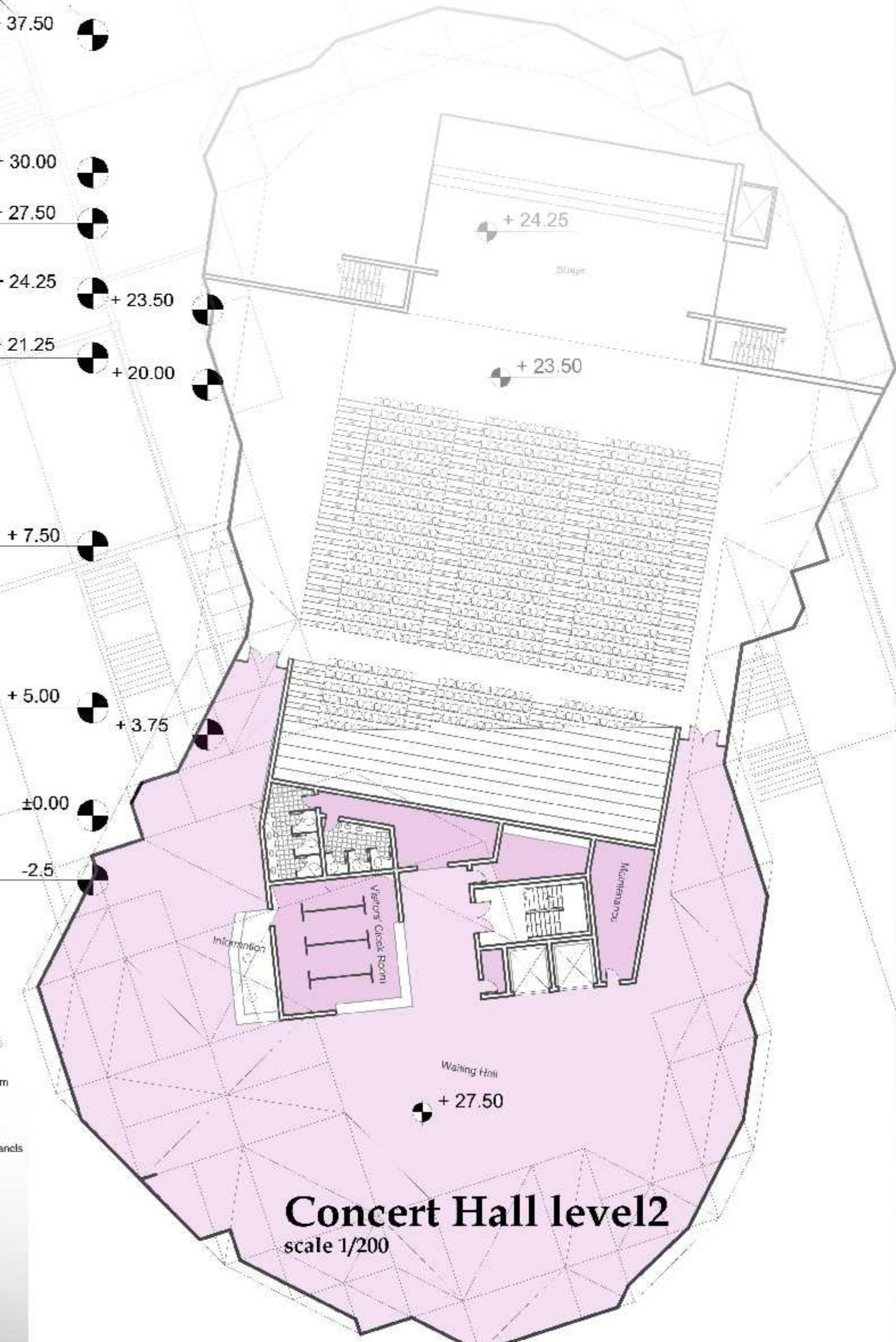


Concert Hall level1  
scale 1/200



Section  
scale 1/200

- + 37.50
- + 30.00
- + 27.50
- + 24.25
- + 21.25
- + 20.00
- + 7.50
- + 5.00
- + 3.75
- ±0.00
- 2.5



Concert Hall level2  
scale 1/200

**Material**

- Reflective aluminum composite
- Transparent ETFE
- concrete
- steel

**lattice structure**

geodesic dome of modular rod  
frame and four way intersection with bracers on grids

