



South Facade  
1:100

Net Area: 8389 m<sup>2</sup>  
Total Number of modules used: 193  
Module types:  
– Big: 12000x2500x3000mm  
– Small: 6000x2500x3000mm

The main aim of this project is to review possible uses of interchangeability and transformation of modules.

The complex consist of 2 buildings connected to a large underground space. The main building is a quite simple square hall with a roof supported by columns. It is encircled by modular blocks that create corridor and rooms around it. There is three stairways leading under ground: two to foyer and one to administration building as well as garage and technical rooms under the hall. All of the offices and artist cloakrooms are located in the administration building.

Main feature of the hall is its ability to transform — It can work in two modes. In "closed" mode hall is completely sealed with the exception of doors and is suitable for concerts or theatrical performances (side parterres become a part of backstage in the last case). Another option is the "open" mode. By the use of mechanical equipment located under the hall all parterres can be lowered to the ground level with seats folded. After that 8 frames mounted within wall blocks are to be moved outside thus completely opening the hall from all 4 sides making it suitable for other types of events, such as open exhibitions or city fair. Yet another option events is to move screen located behind the scene upward. This transformation opens the scene for open air events on northern side of the hall.

Foyer with visitors services and restaurant are located underground but modules are used there too. Their glass cover provides light at a daytime and their outstanding cubical shape is suitable for advertising and showcase purposes.



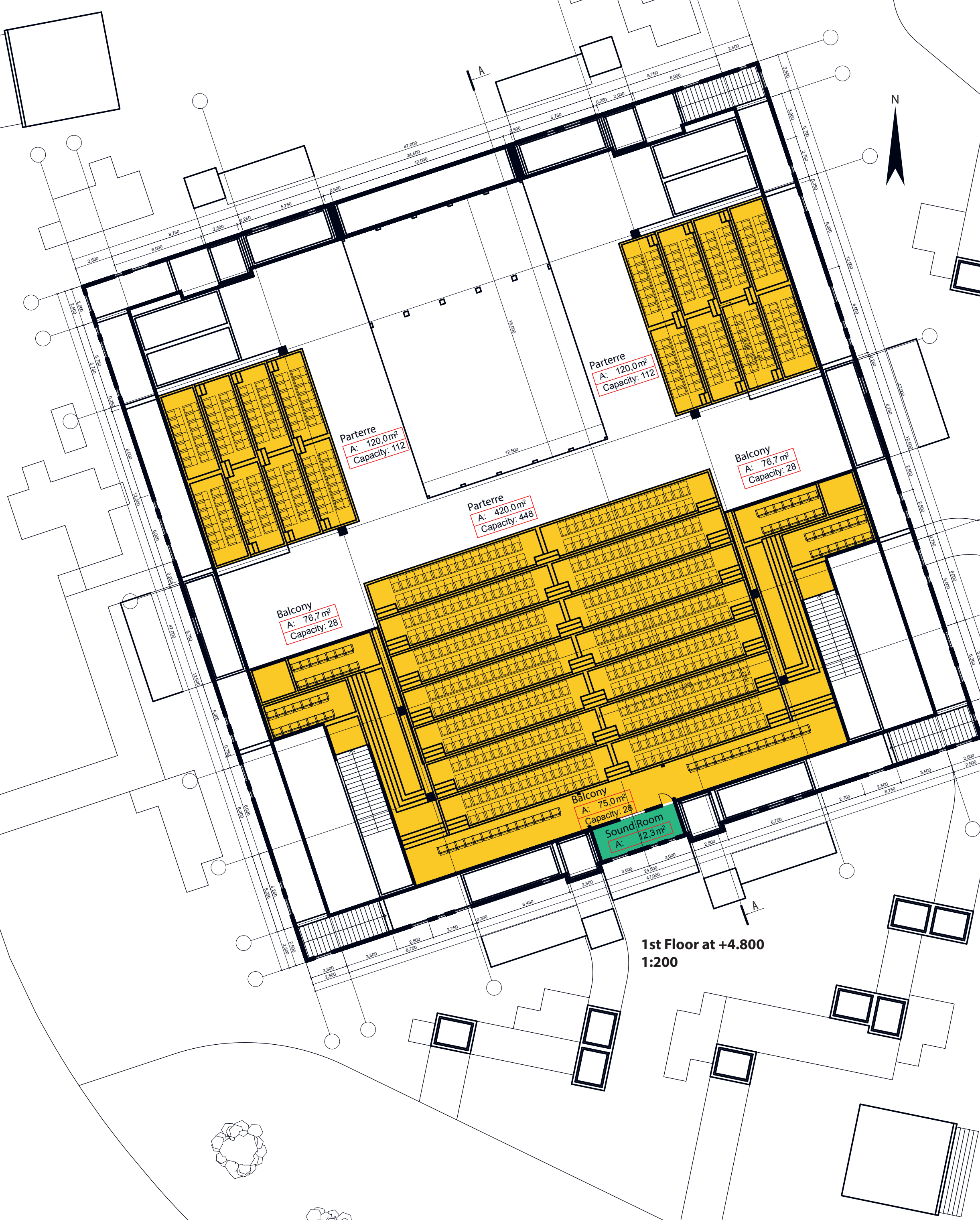
2nd Floor at +8.000  
(Administration building only)  
1:400

#### Room types

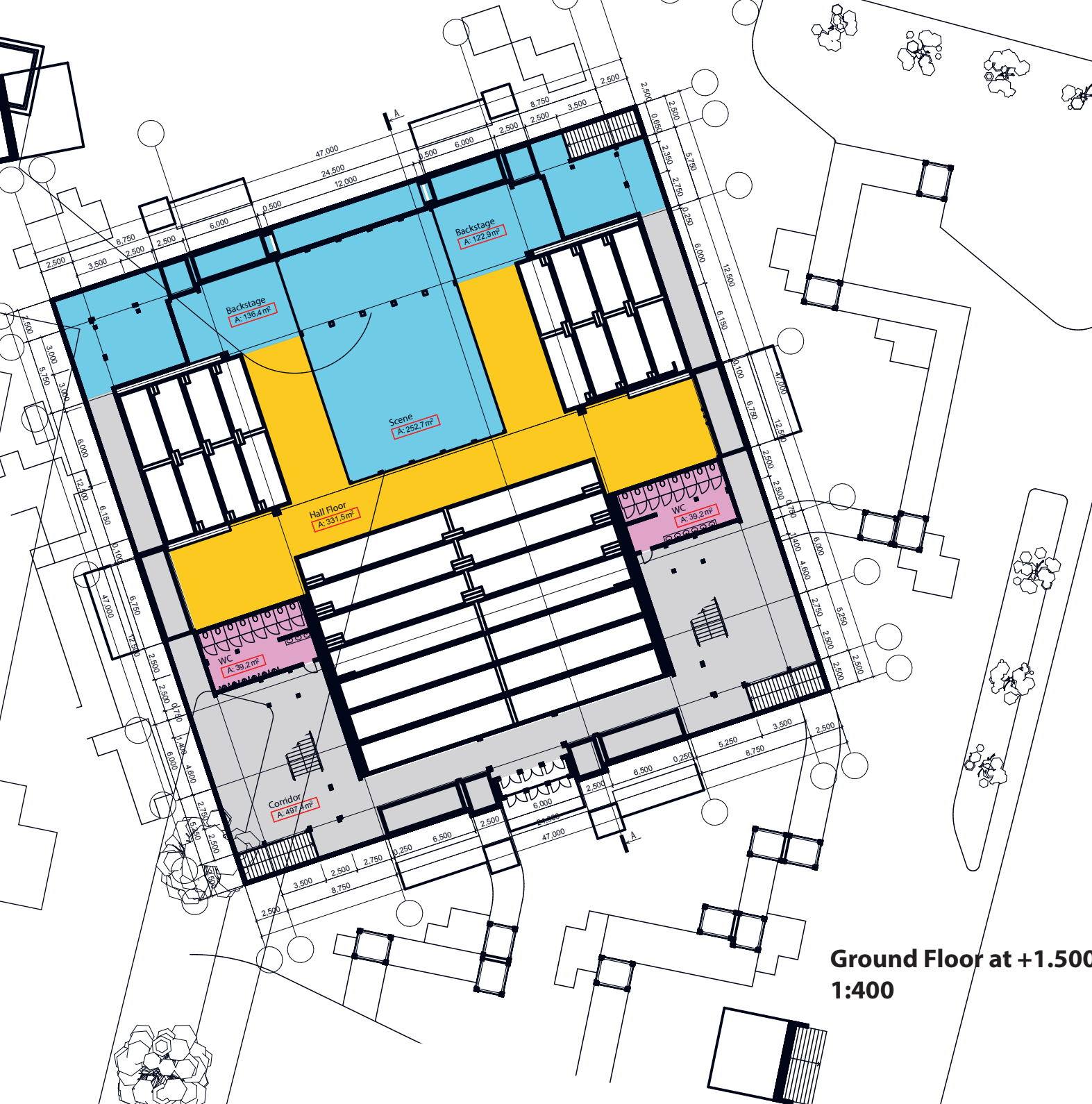
- Common
- Visitor services
- Scene
- Offices and other facilities
- Technical facilities
- Parking
- Sanitary installations
- Communication areas



General Plan  
1:2000



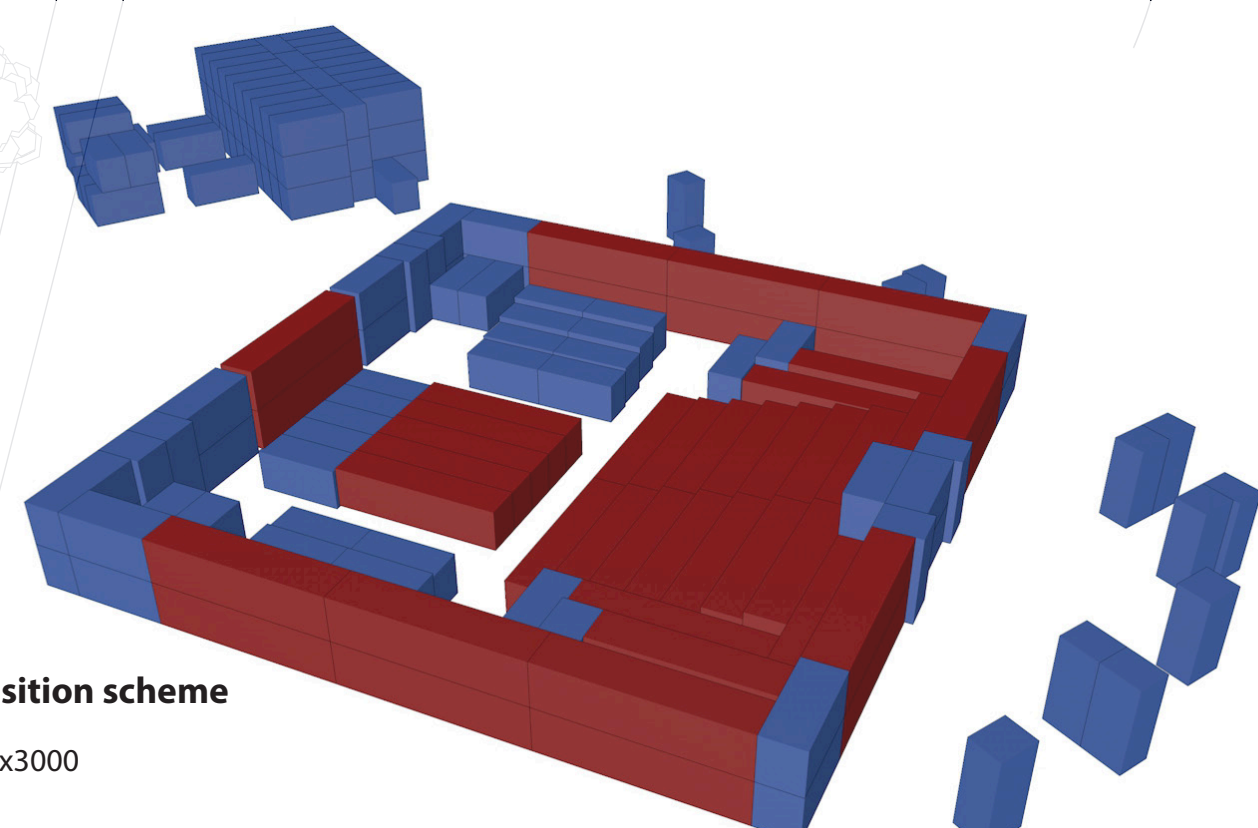
1st Floor at +4.800  
1:200



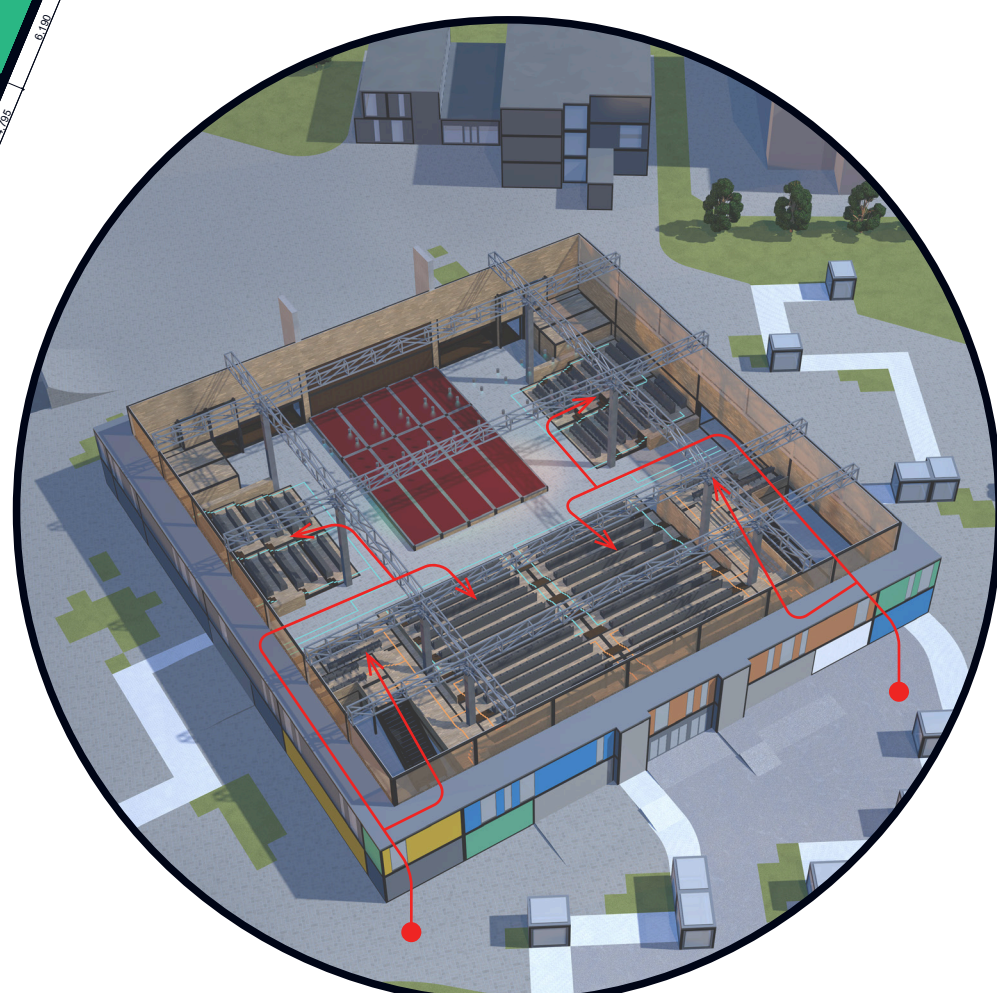
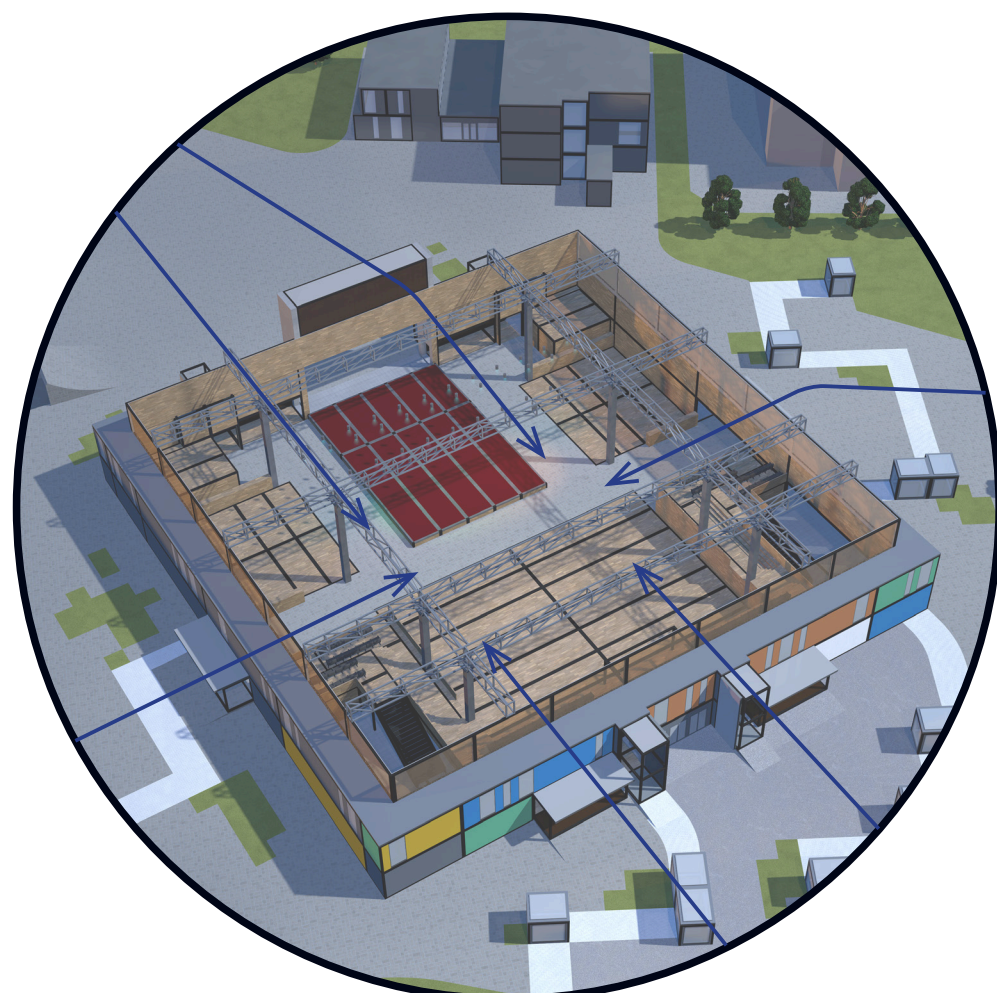
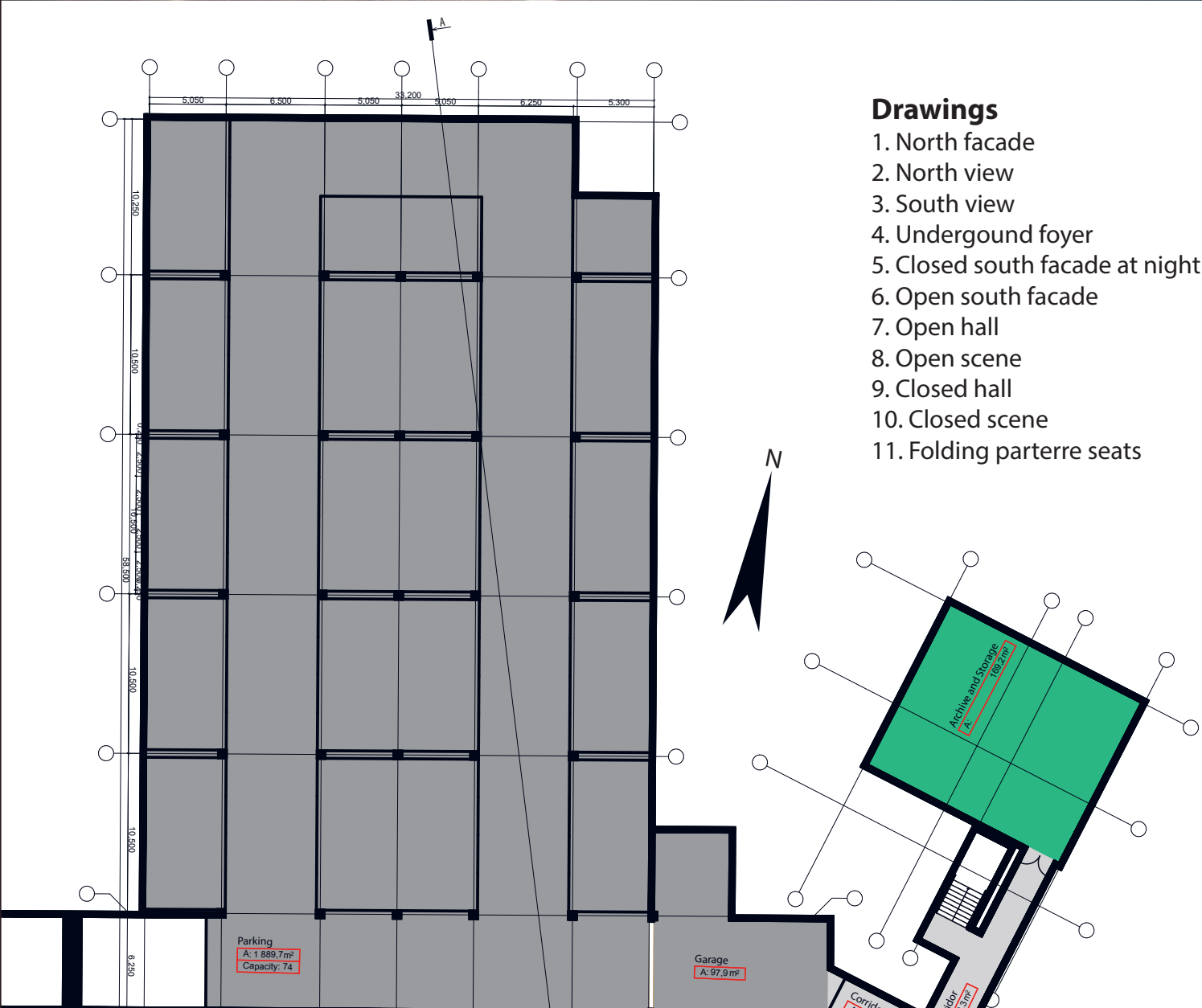
Ground Floor at +1.500  
1:400

#### Blocks composition scheme

- 6000x2500x3000  
150 blocks
- 12000x2500x3000  
43 blocks

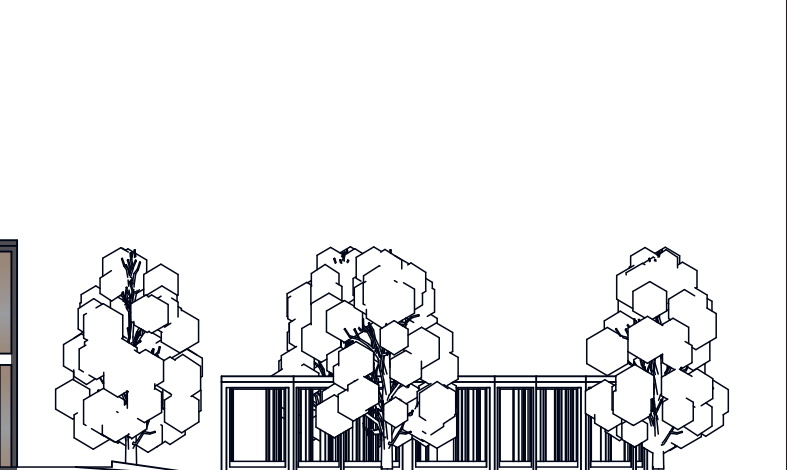
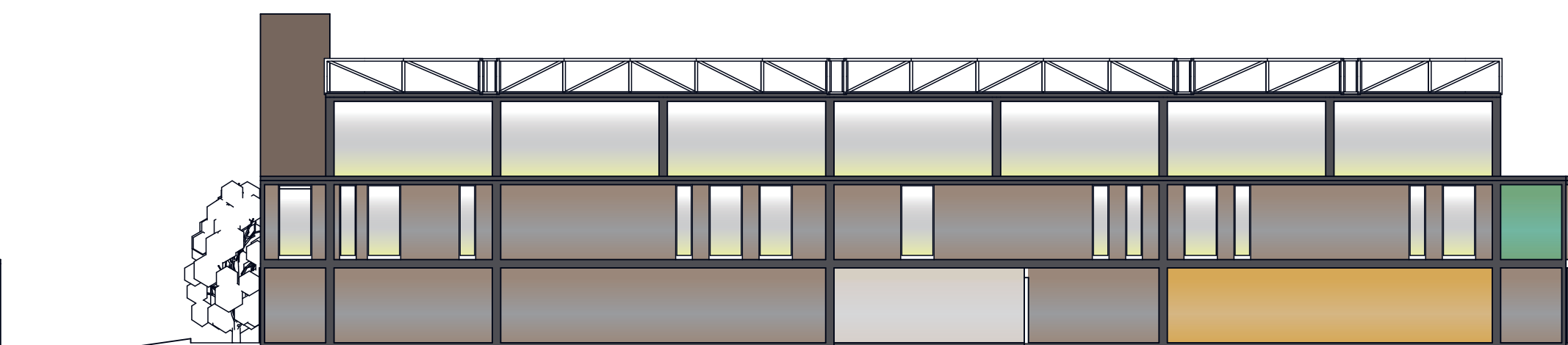
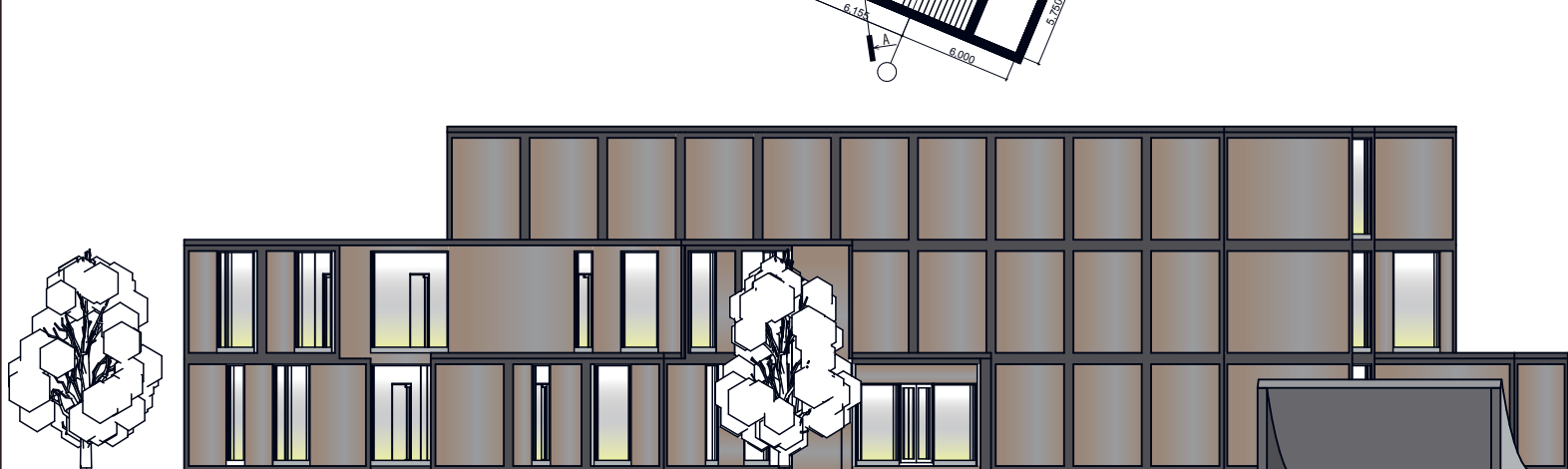
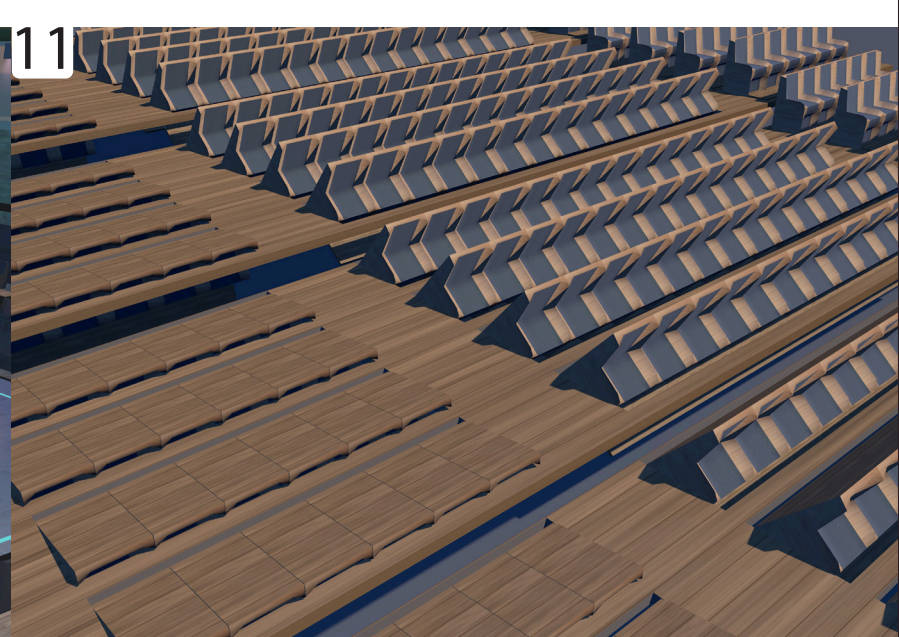
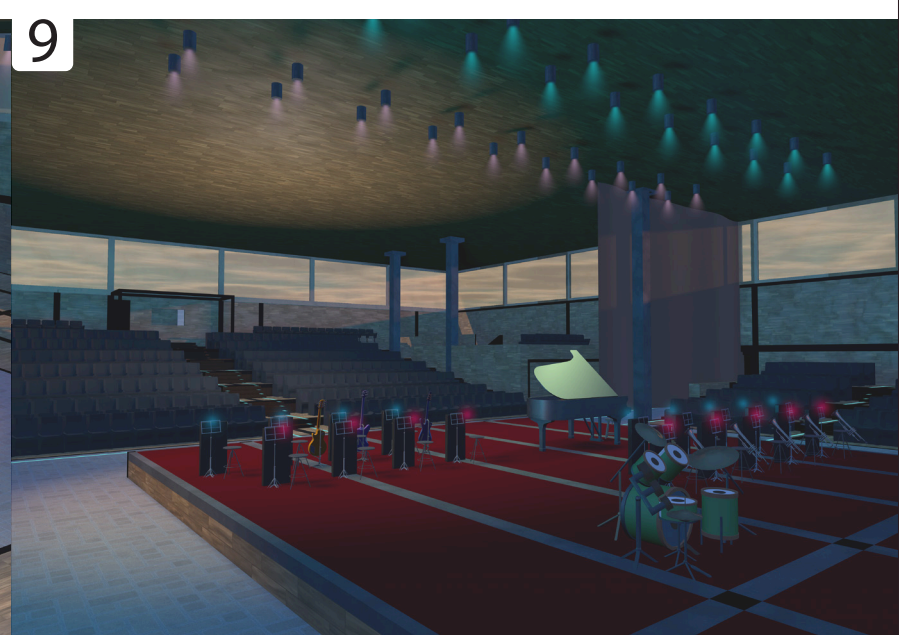
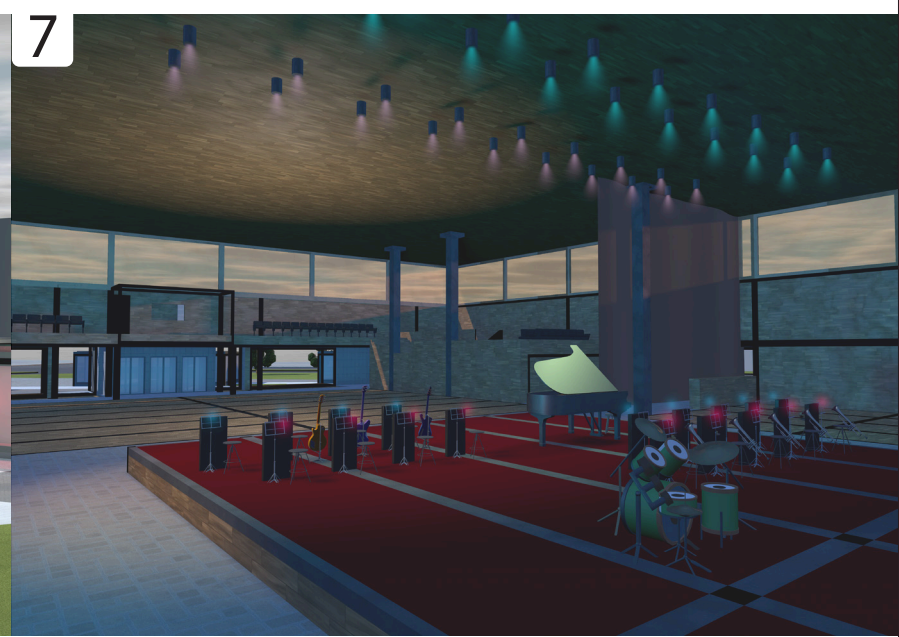
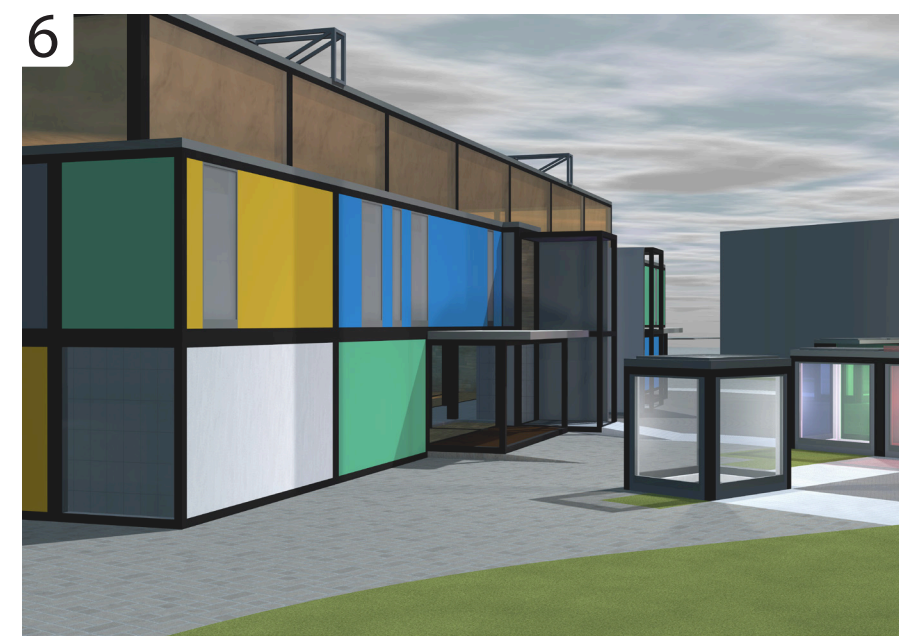
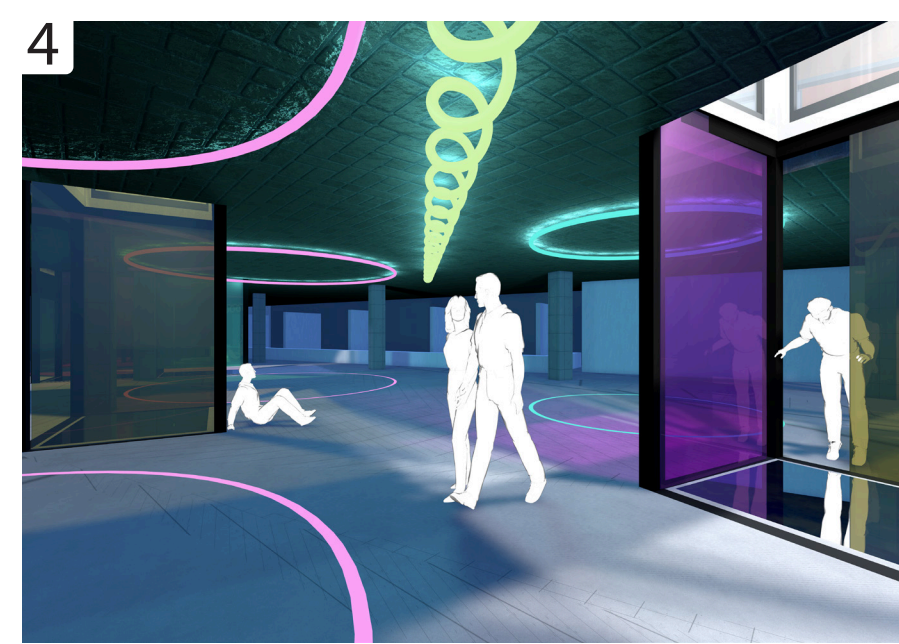




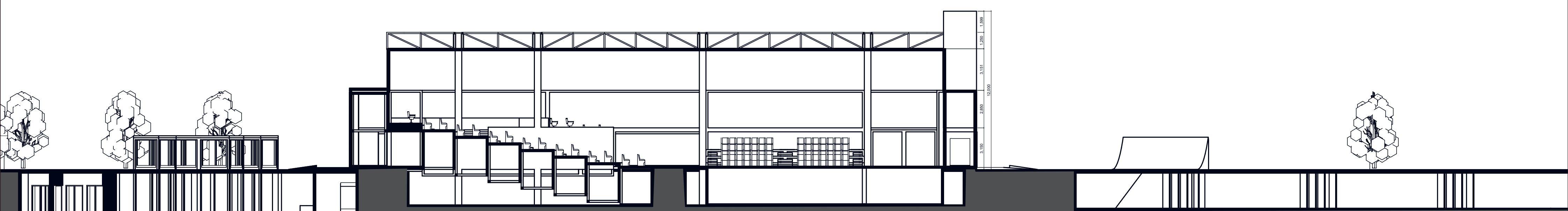


**"Open" mode.**  
Roof is not shown.  
Opening the walls creates easily traversable public space

**"Closed" mode.**  
Roof is not shown.  
Keeping the walls shut is more suitable for symphonic concerts and theatrical performances.



West Facade  
1:200



Section A-A  
1:200