

FOREST WALK THEATER

FOREST WALK

Setting up a new iconic building with a modern approach in the heart of a historic area should still have elements that compliment the existing surrounding. The site is directly surrounded by rows of buildings with traditional facades with presumably lower heights than an orchestra building. The site also faces a ring of greenery, the Na Sadech.

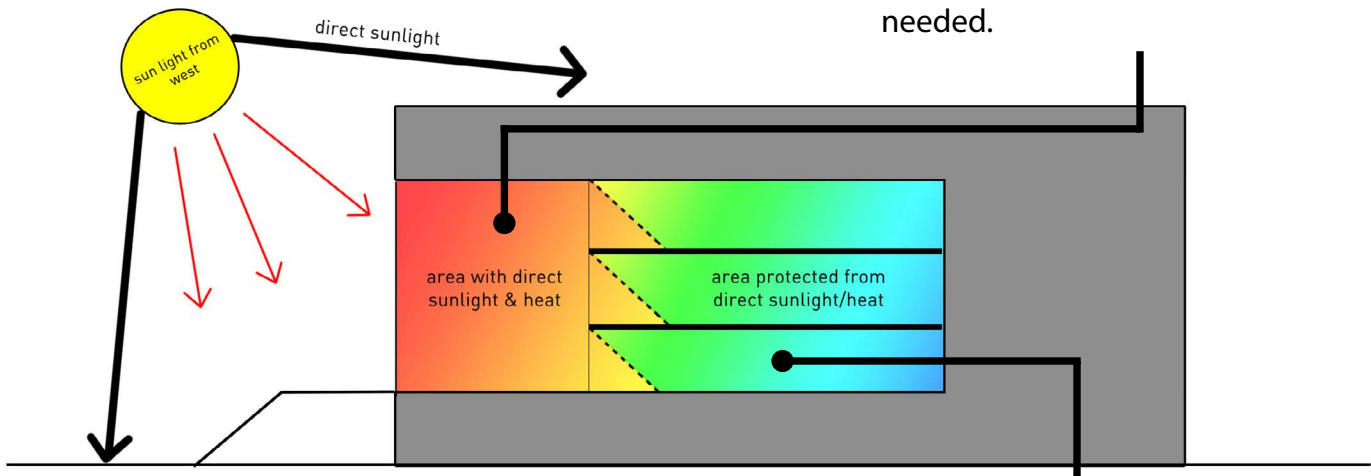
To blend in with the environment, the Forest Walk is designed to act as a transition to the distinct faces of its surrounding and also as an urban revitalization, extending the green space of the Na Sadech.

This green feature isn't only a breath of fresh air for the visitors of the Philharmonic, but it also gives visual relief to the packed city, even from the highest buildings around. Through this natural experience, people can easily walk from one facility to another within the philharmonic area while enjoying the view of greenery along with little shops. The forest walk is essentially an additional little park to the city.



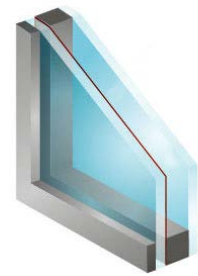
SUN/HEAT ANALYSIS

Due to the direct sunlight throughout the day, the lobby would be warm enough in cold days with little to no artificial heating needed.



This area is protected from direct sunlight that comes from the west. It will be colder than the lobby area but safer from sun. Even though it's not as exposed to light as the lobby, the foyer area won't be dark during the day because it also has openings from the south. It'll be less warm but just as efficient as the other area.

Double glazed glass panels are used to reduce any excessive heat generated from sunlight, thus, reducing the need of using artificial thermal con-



KOMA MODULAR CONCEPT

Using the Comfort Line type, Koma modules are placed in the Commercial Area and for shops inside the Forest Walk. They are placed in that area because of its efficiency and its wide variety of replaceable walls. In the Commercial Area, the modules are stacked 3 times while in the Forest Walk they are stacked 2 times.

- Solid Wall Box 42 UNITS
- Glass Wall Box 72 UNITS



SERVICE AREA

Staff and vehicles that enter the site for service purposes have their own access and parking space, as it is more private with the need of separate space for distributing heavy equipments.

ZONING

PHILAHARMONIC HALL

The philharmonic building is set far from the main streets to avoid dominance among the cultural faces of the surrounding buildings, as it still applies a modern style to differentiate itself as a new iconic landmark in the modern era.

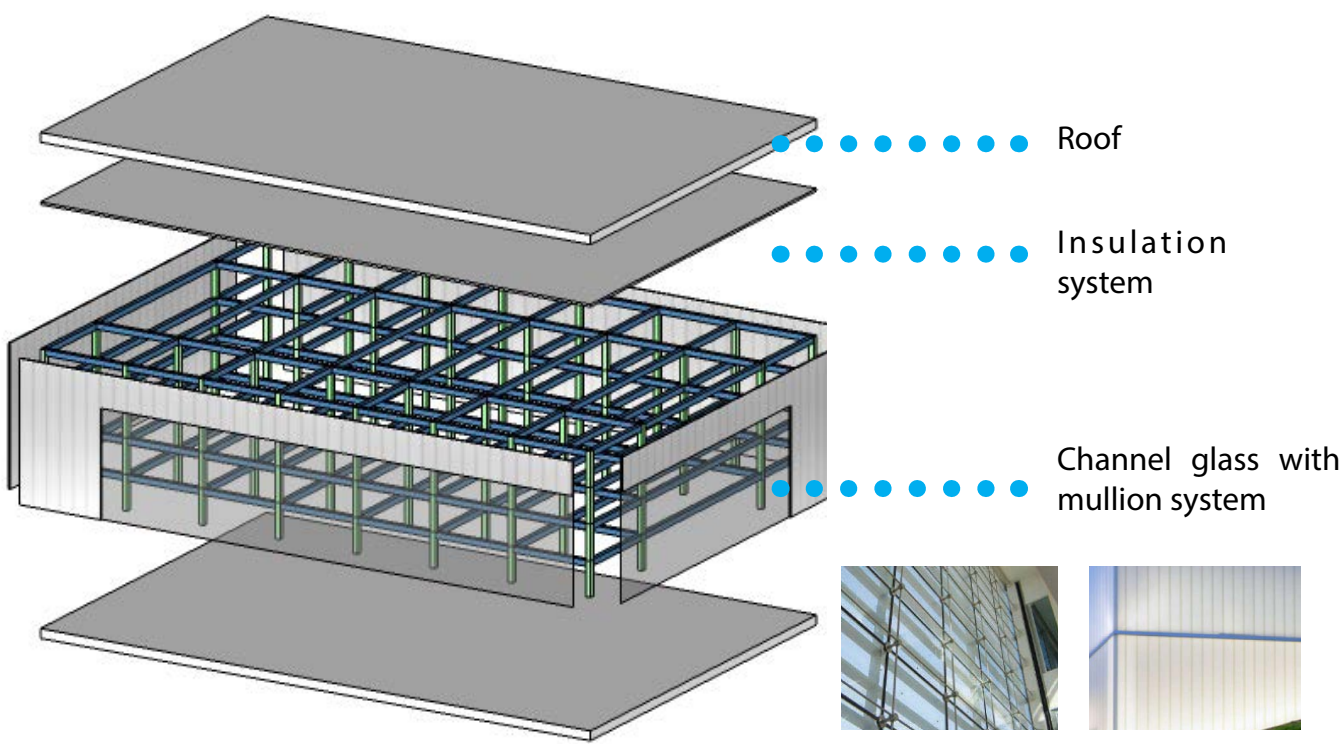
AMPHITHEATRE

The location of the outdoor amphitheatre strengthens the orientation of the philharmonic site towards the historical site of the Samsonova kašna.

FOREST WALK

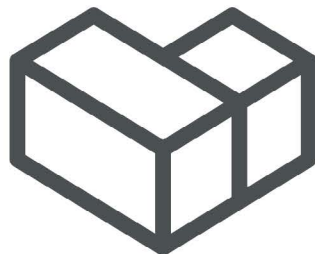
The forest walk resides at the center of the site, acting as a dynamic circulation connecting the different areas, with a natural visual experience. This outdoor area also serves as a transition between the cultural surroundings and the modern iconic philharmonic orchestra.

STRUCTURE & MATERIAL



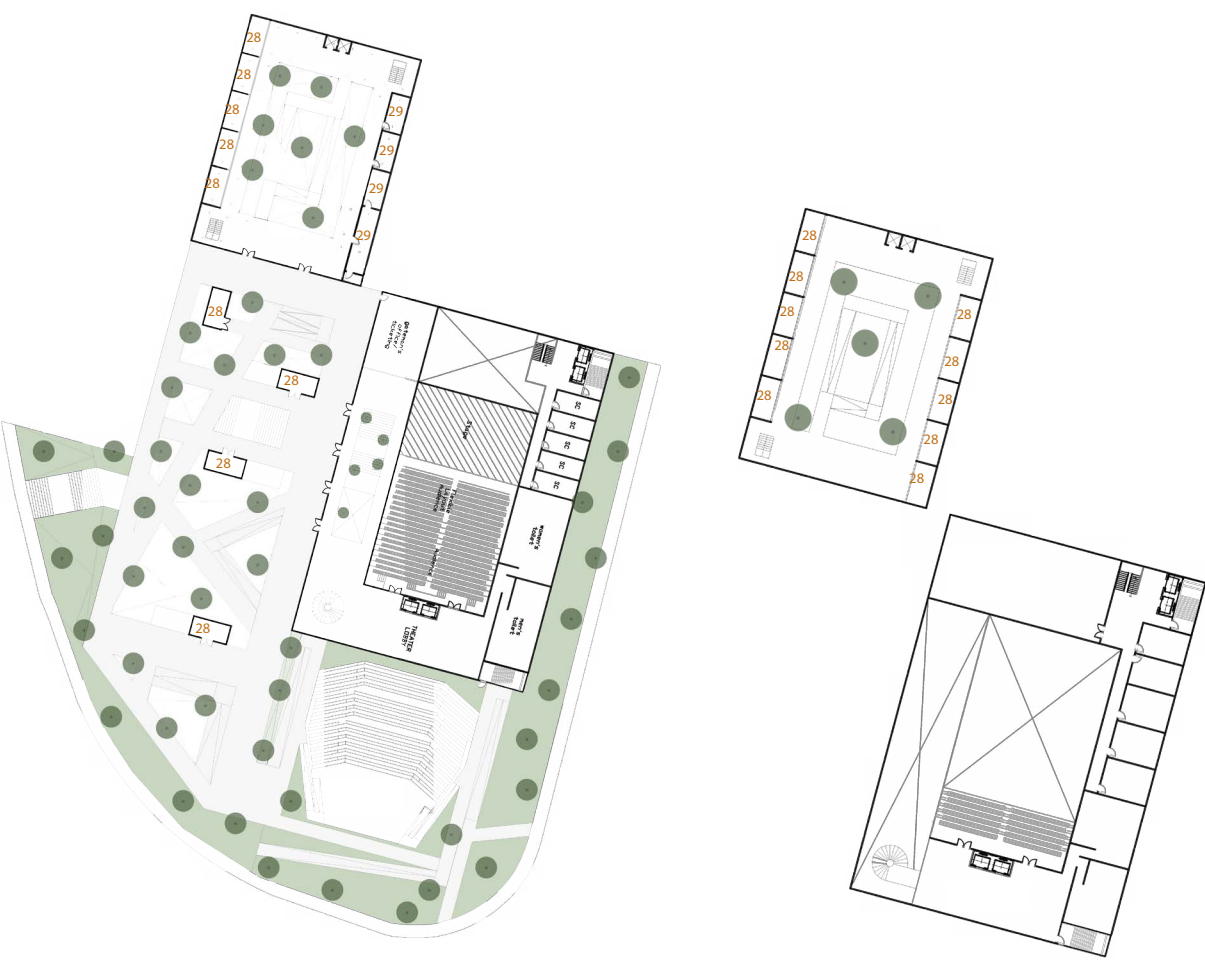
The main structure of the theatre building is rigid frame system that uses and concrete for fireproof. For outer skin, this theatre is using channel glass wall system that consists of self-supporting cast glass channels and an extruded metal perimeter frame. The end result is a wall that obscures vision but allows light to pass through. It's used in exterior applications and installed vertically.

This glass is supported by mullion systems. The simplest form includes a steel or aluminum section positioned at every vertical joint in the glazing grid. Mullion components consist of built up custom structural sections capable of accommodating long spans in both vertical and horizontal positions. It employs horizontal mullions suspended from overhead cables and fixed to anchoring building structure at its ends.



MODULARCH

89R945



LEGEND

- 1 Theater Lobby

2 Ticketing

3 Cloakroom

4 Stage

5 Toilet

6 Soloist Cloakroom

7 Orchestra Cloakroom

8 Maintenance Office

9 Storage

10 Backstage/ Load Area
- 11 Stage

12 CMC

13 CC

14 IC

15 Common Room

16 Archivist Room

17 Fire Hydrant Reservoir

18 Hot Water Reservoir

19 Clean Water Reservoir

20 Battery Cell Room
- 21 AHU Room

22 Lighting & Sound Maintenance

23 Solar Panels

24 Office

25 Director Office

26 Rehearsal Room

27 Drop Off

28 Shops

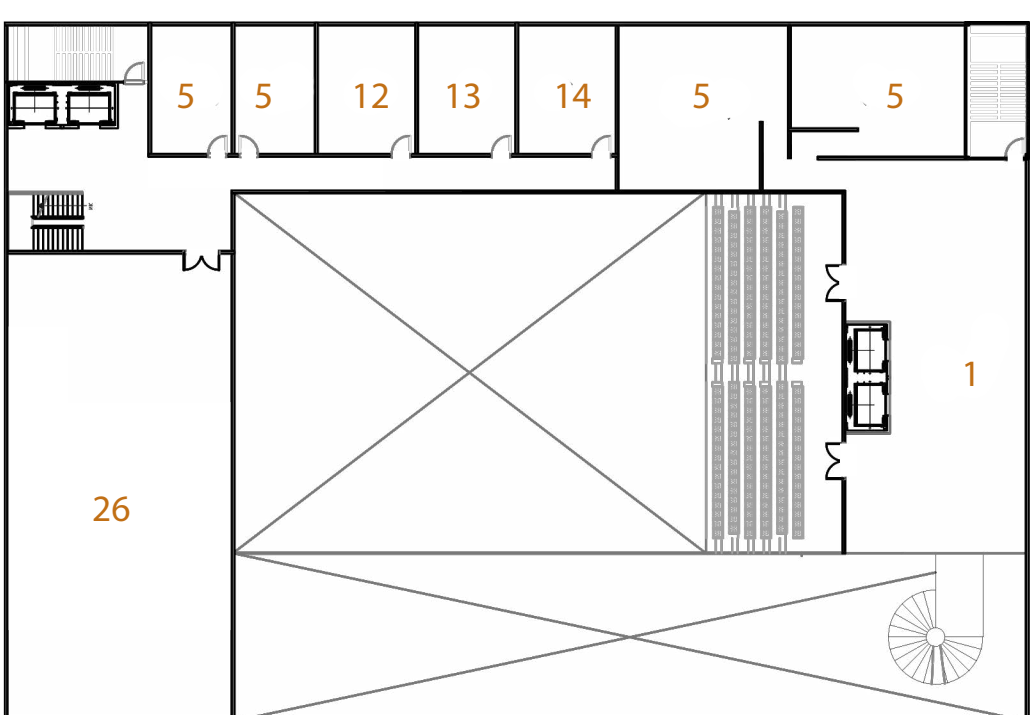
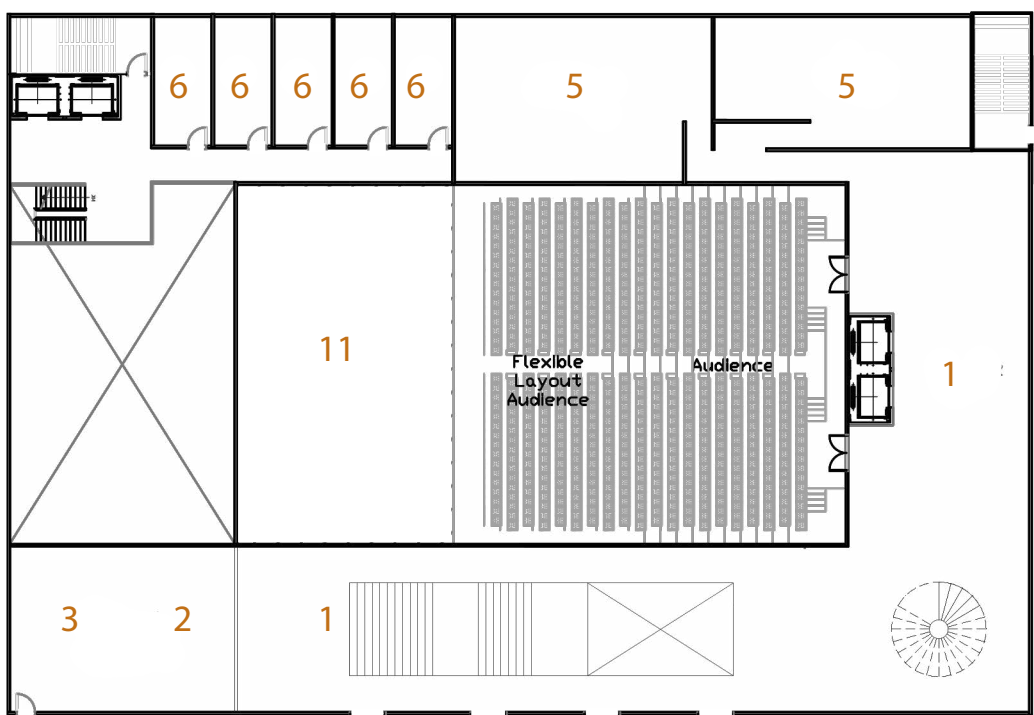
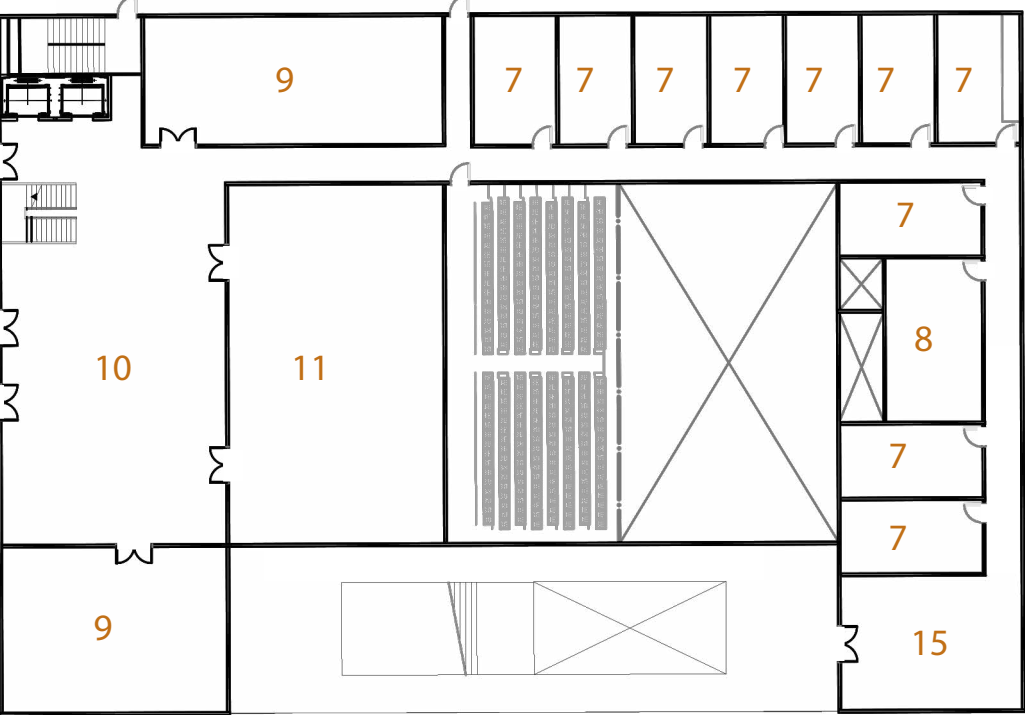
29 Office

30 Food Court

SITE PLAN NTS

1ST FLOOR NTS

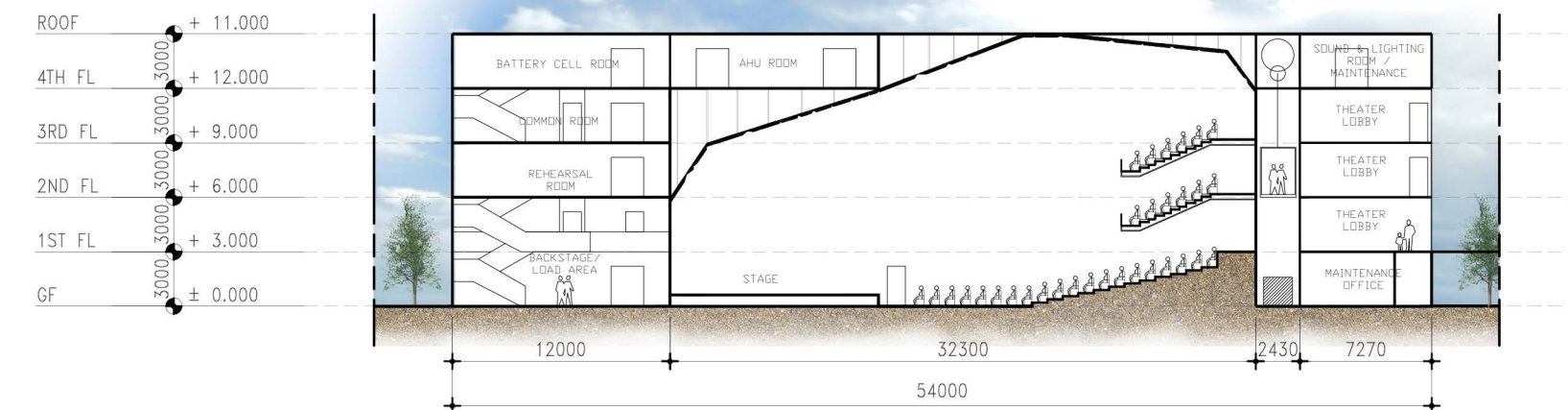
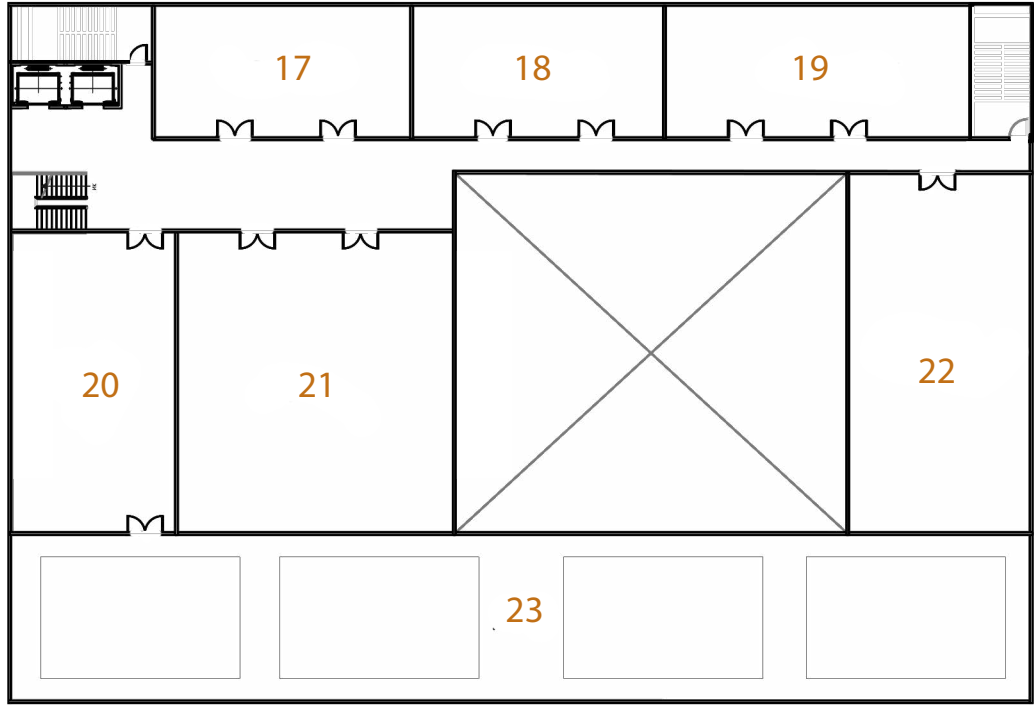
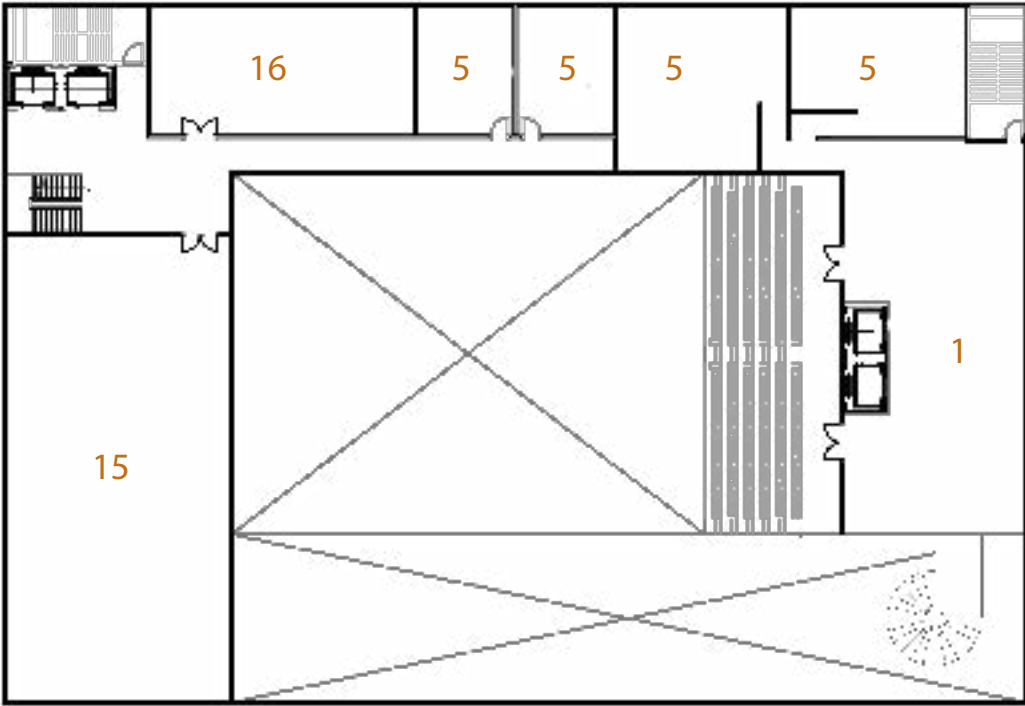
2ND FLOOR NTS



GROUND FLOOR 1:400

1ST FLOOR 1:400

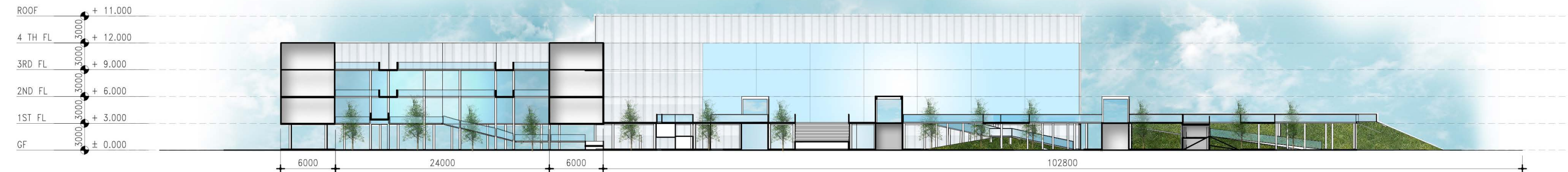
2ND FLOOR 1:400



3RD FLOOR 1:400

4TH FLOOR 1:400

SECTION 1:400



SITE SECTION 1:500

