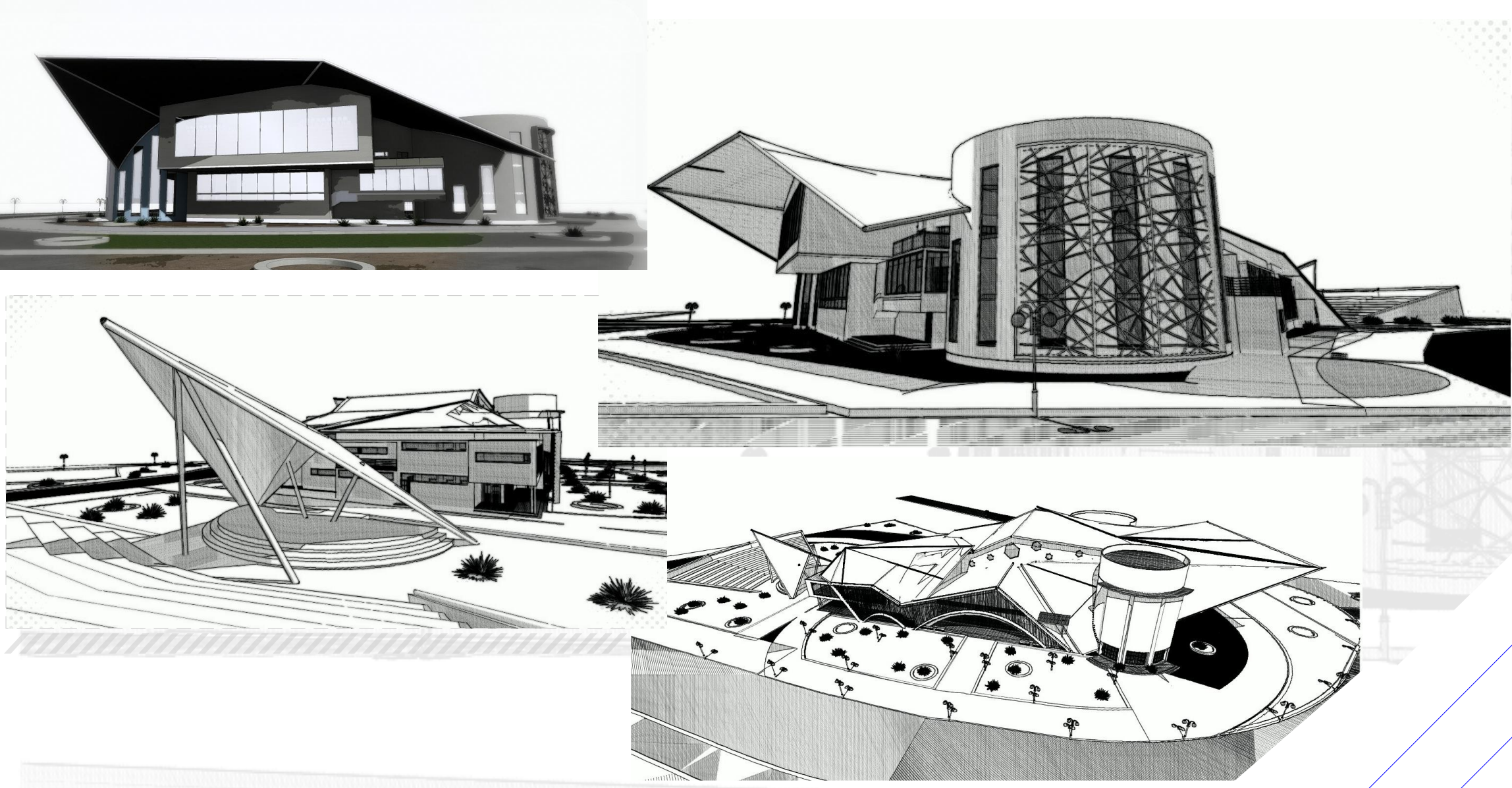


PROPOSAL OF A MULTI-PURPOSE BUILDING OF THE SOUTH CZECH PHILHARMONIC

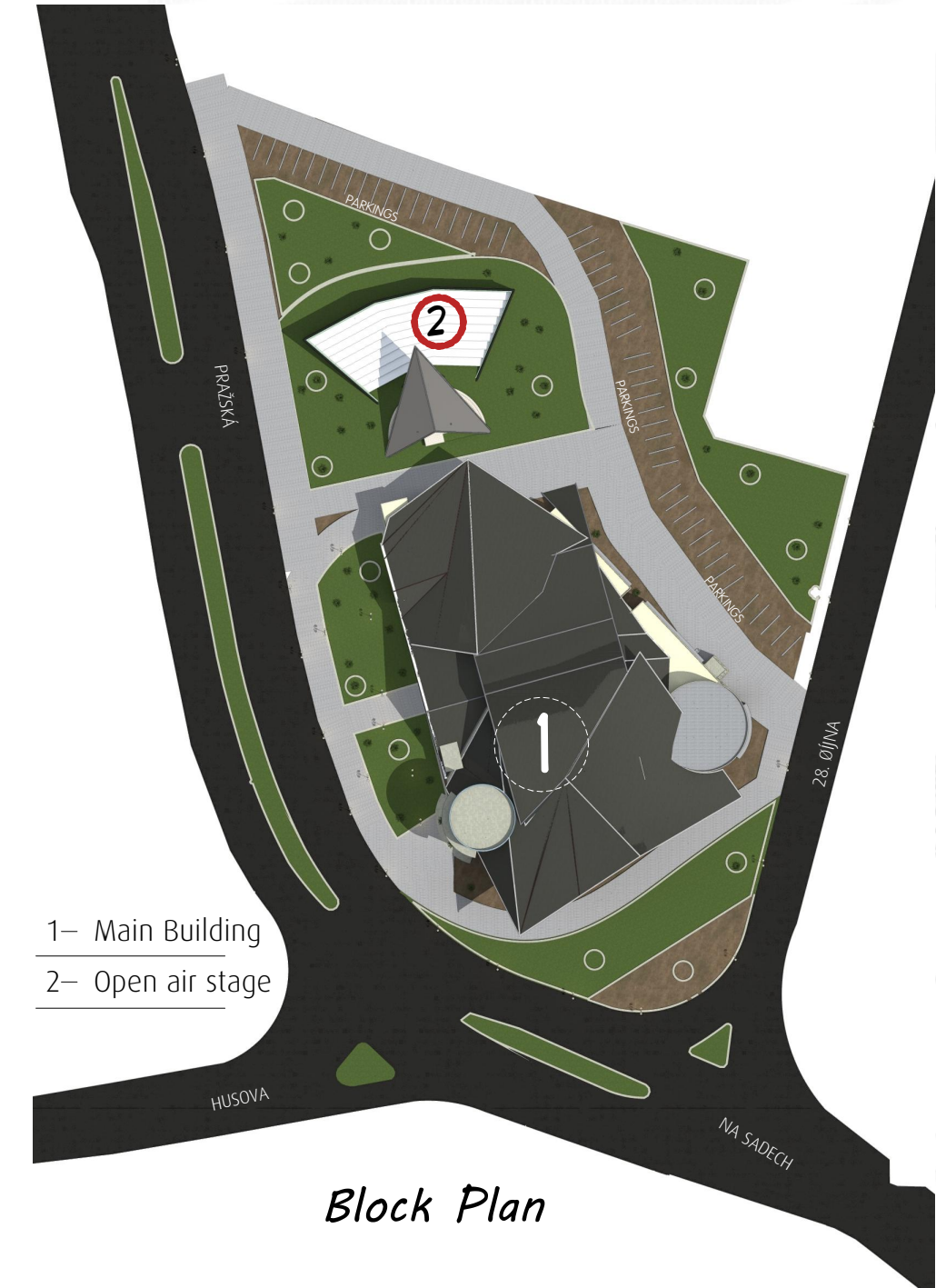
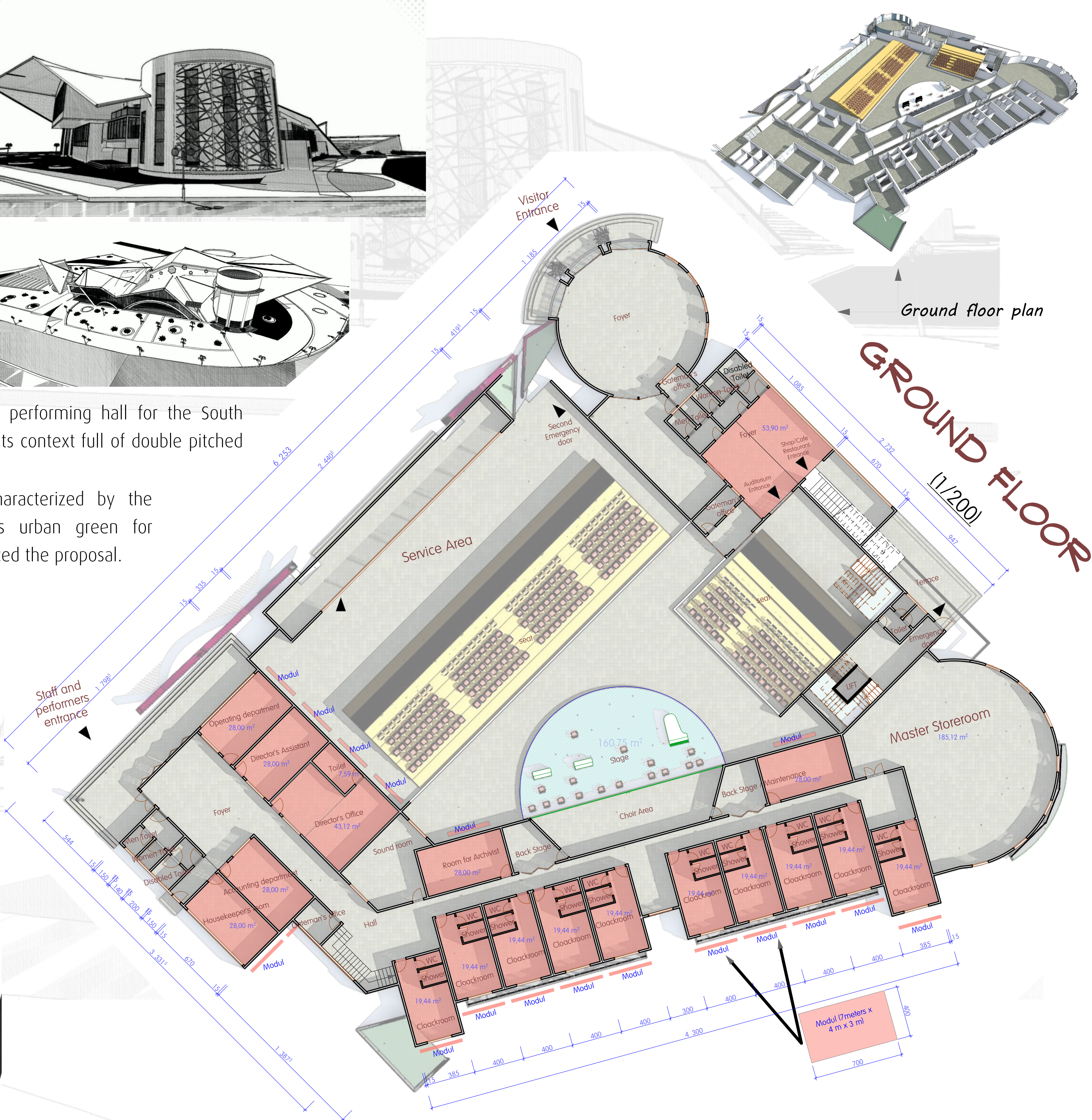


The proposed building is a multipurpose performing hall for the South Czech Philharmonic Son design in inspired by its context full of double pitched roof from the medieval architecture.

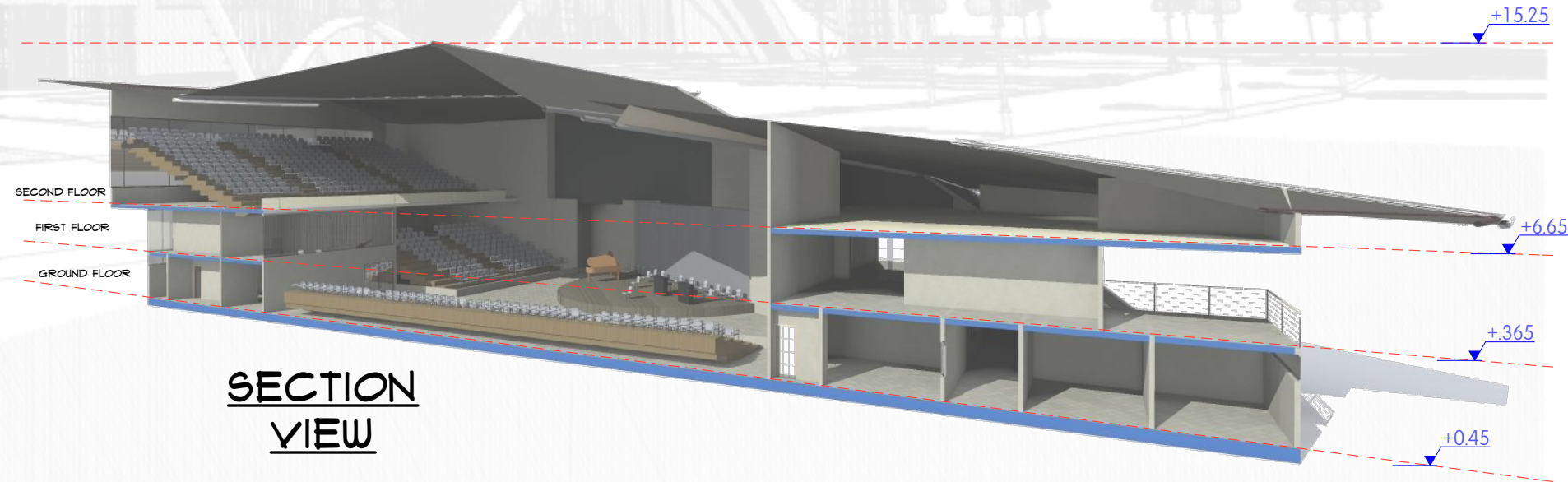
The Ceské Budejovice settlement is characterized by the extensive use of pitched roof as well as urban green for landscaping. These two elements have influenced the proposal.

The combination of these two characteristics generated a 3-Storey building laid over a 2500 sqm (square meter). The spaces accommodated one these floors are: performers' areas, the main auditorium, and some amenities for the public.

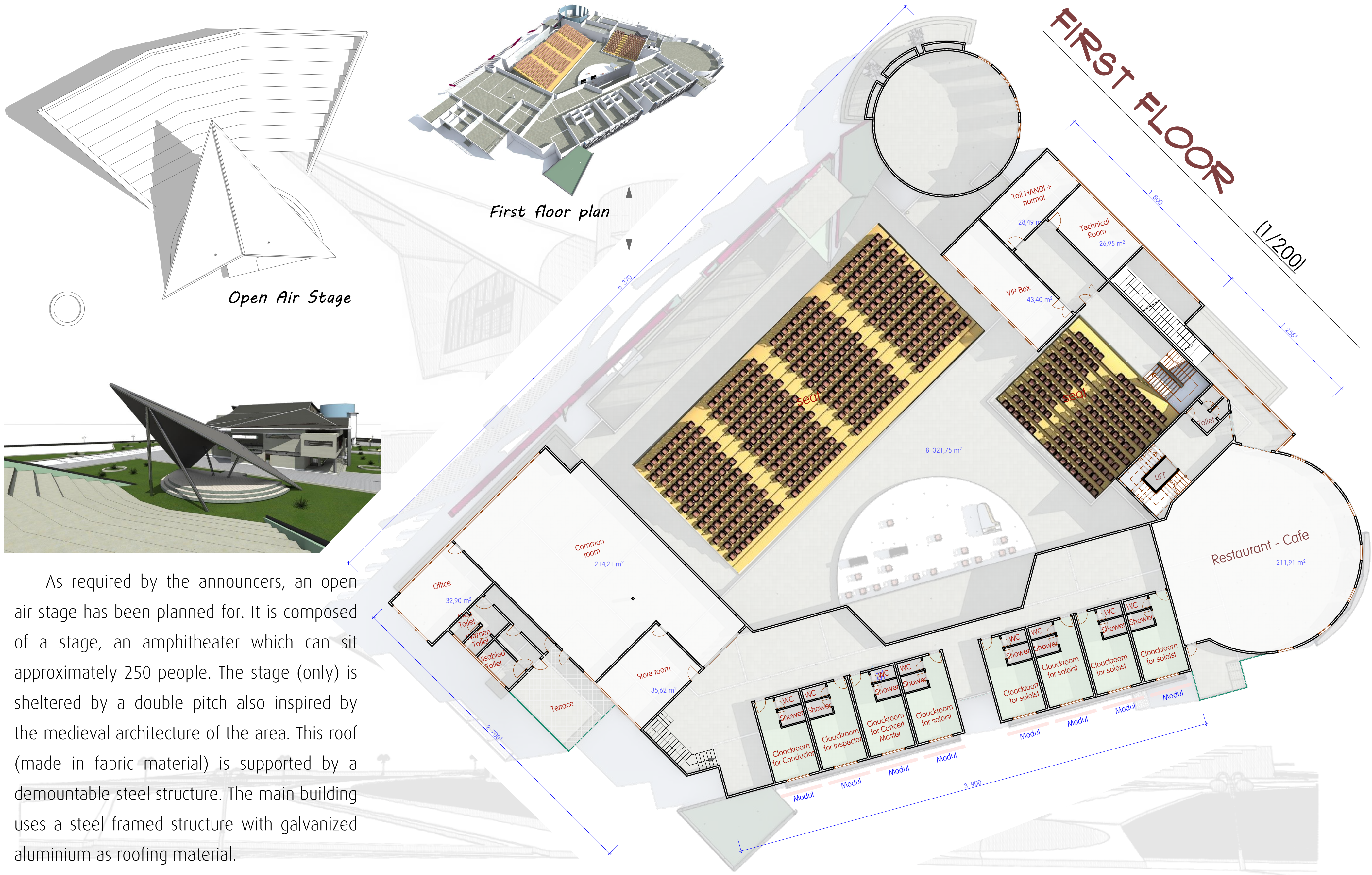
For the design of the main building, modules of 7x4x3m have been used to meet the basic requirements set by announcers of the competition. These modules were mainly used as cloakroom for performers, and some areas of the administration.



Sectional 3d of main building







As required by the announcers, an open air stage has been planned for. It is composed of a stage, an amphitheater which can sit approximately 250 people. The stage (only) is sheltered by a double pitch also inspired by the medieval architecture of the area. This roof (made in fabric material) is supported by a demountable steel structure. The main building uses a steel framed structure with galvanized aluminium as roofing material.

The site layout makes extensive use of green areas like the original site. The site has been planned to give a maximum visibility to the buildings; so therefore, the main building and the open air stage are visible from the main roads.

The proposal for the South Czech Philharmonic becomes a major architectural feature of the area due to its 'dramatic' roof which kind of blends to the context.

*Some interior views*

