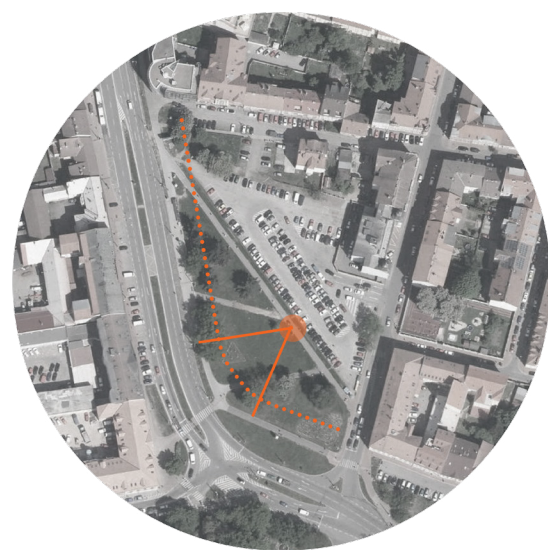




Capturing Civic Grid



Linking Public Green



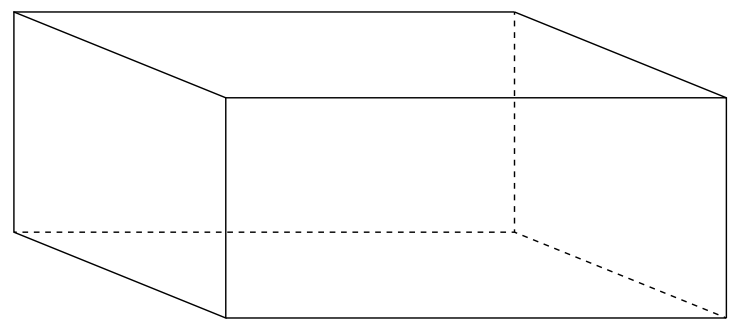
Site Focal Point



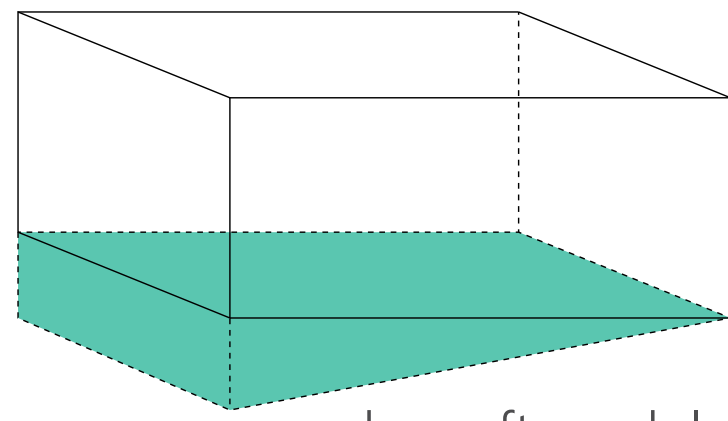
Access Points



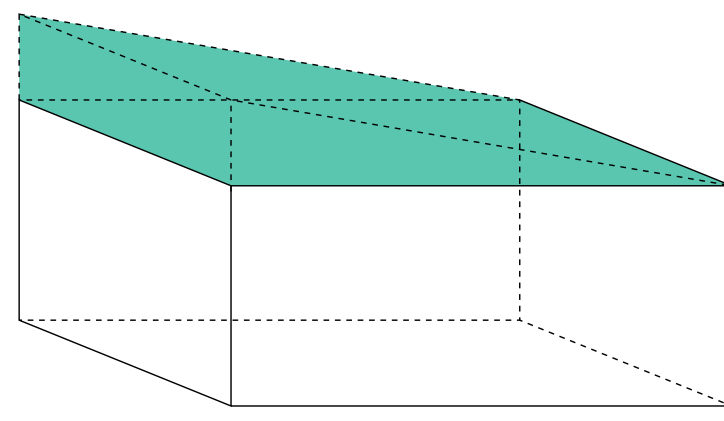
Plaza Enclosure



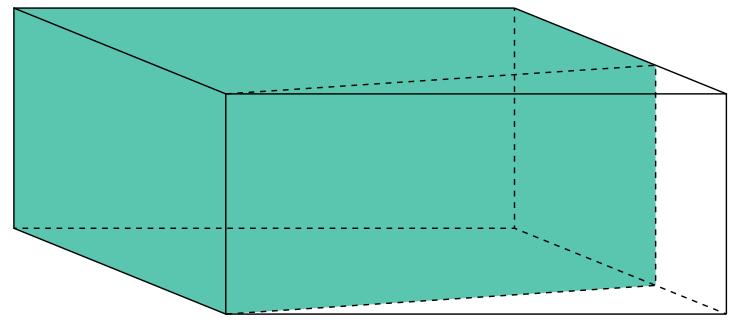
module



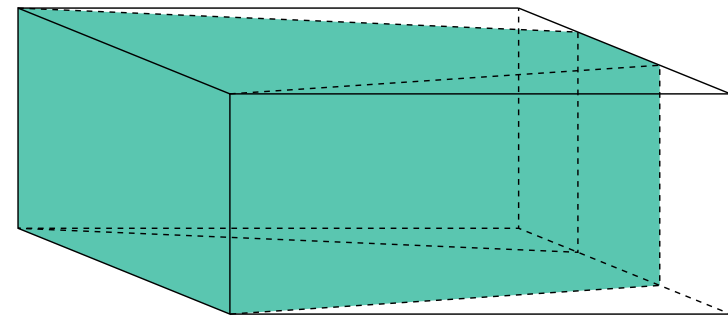
undercroft module



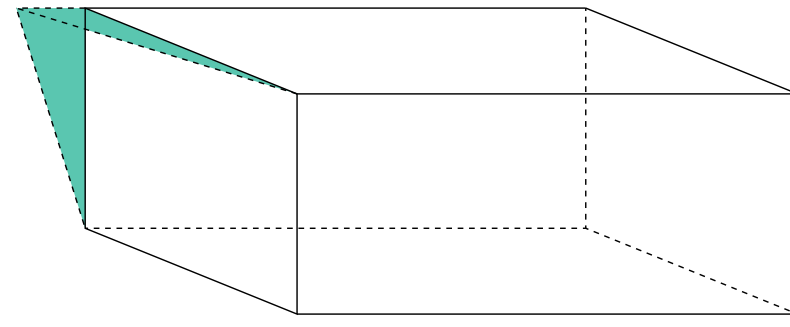
roof module



single side curve module



two side curve module



shading module



Interior Rehearsal

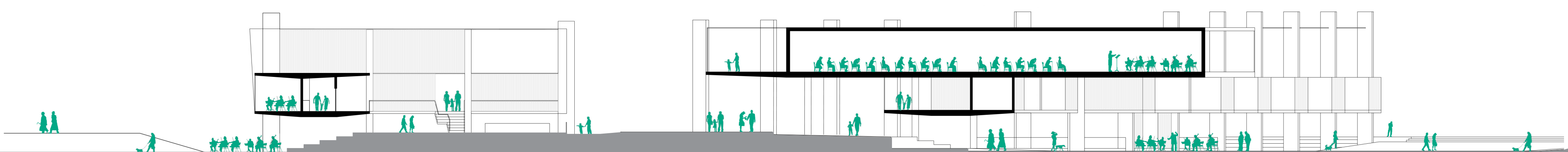
simfonia | south czech philharmonic



Located just north of České Budějovice's ancient town square, Simfonia is a public offering to the city as a new focal point of cultural convergence, serving as the home of the South Czech Philharmonic. The bravery, strength and vitality found within Antonin Dvorak's New World Symphony forms the compositional inspiration for the rhythmic pattern of KOMA Modular aluminium blades, which have been accentuated and transformed into a series of unique and repetitive units that re-establishes civic order with the urban grid. Behind the gently undulating façade of Simfonia, a series of new topographies emerge, with generous foyer spaces welcoming visitors whilst providing glimpses over a sunken and protected urban landscape toward the enclosed civic square and outdoor theatre.

The new public plaza embedded into the landscape forms an acoustic enclosure for musical activities to occur peacefully, set back from the city's main transport arteries. Simfonia harnesses architecture's ability to serve as a medium which embraces its users through an interweaving ribbon of social activities and redistributing both the needs of the performers and the users throughout the site.

As a visitor proceeds up to the mezzanine datum, they are met with a series of porous rehearsal rooms and breakout spaces, architectonic variations of the KOMA Modular City Modules which provides acoustically



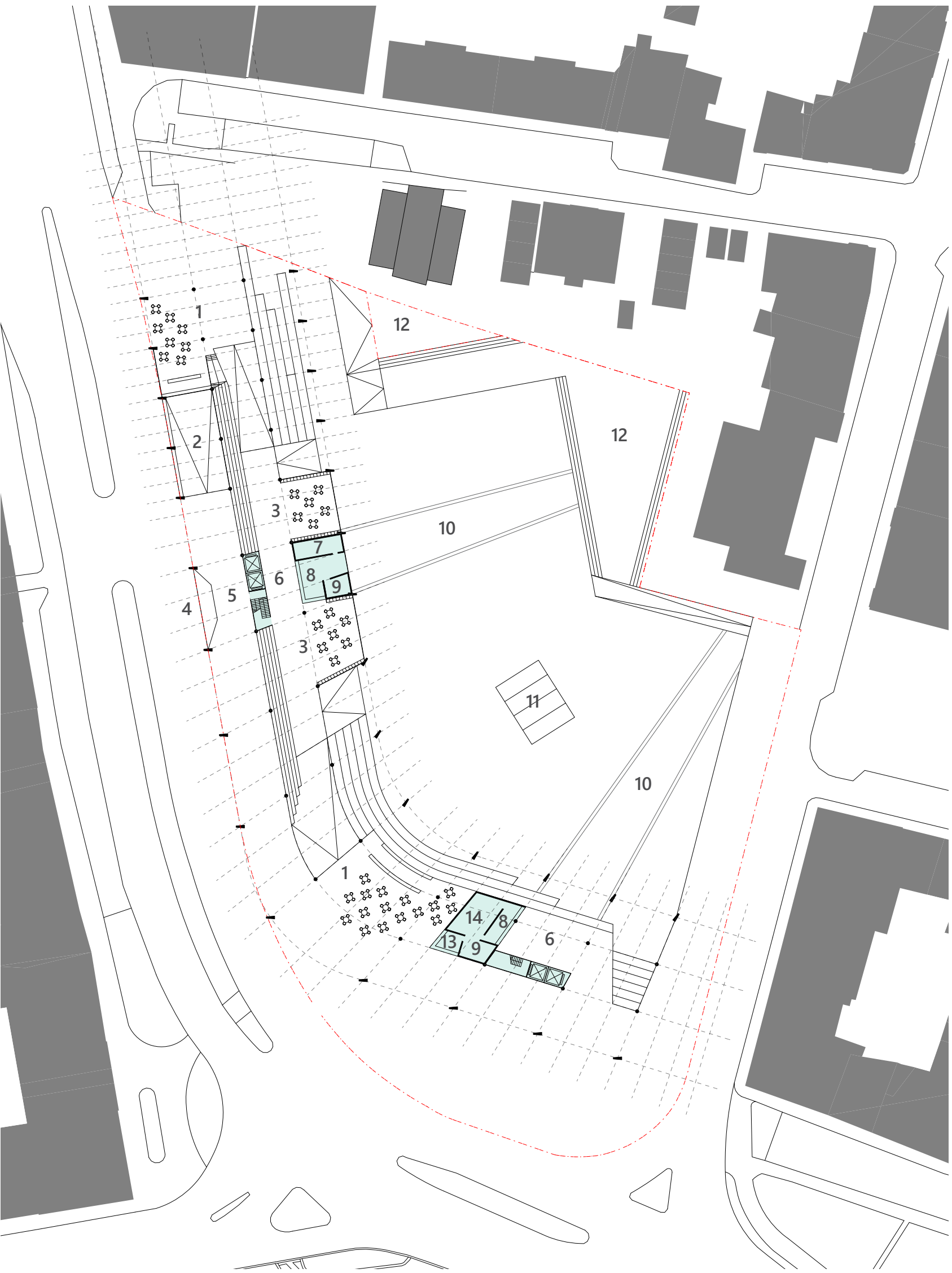
Northern Entry Section | 1:250

Southern Entry Section | 1:250

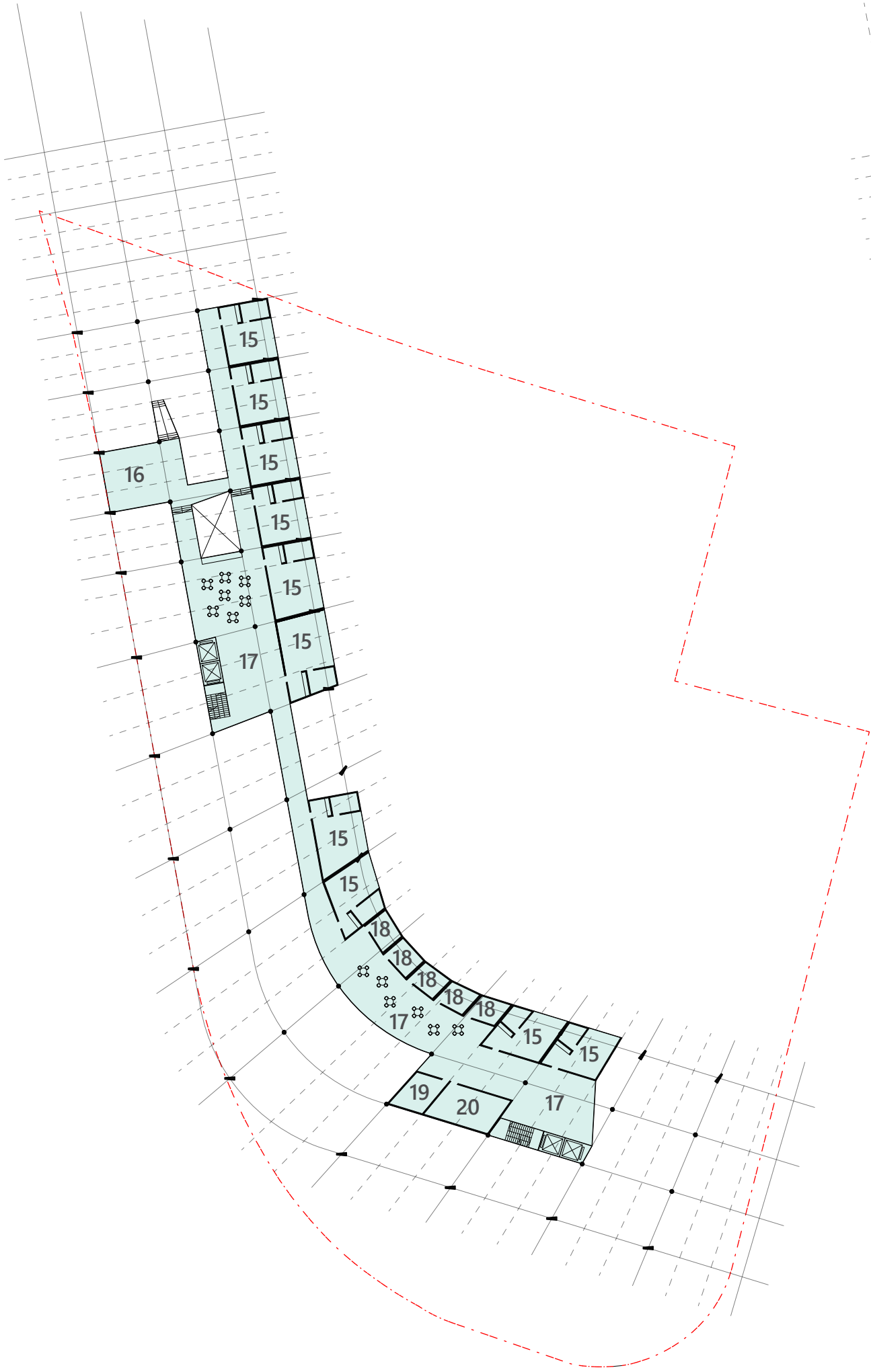
insulated places for musicians and singers alike to practice and prepare for performances. The normally clear demarcation between performer and viewer is blurred by these interstitial spaces, empowering visitors and musicians alike with opportunities of discovery and autonomous control, seamless transitions of space shaped by the modules' enclosure, repetition and contrast.

Arriving within the first floor foyer, the KOMA Modular blades which once whimsically wrapped over the building are revealed here as a tool for visual and thermal control. Angled carefully, these blades control solar access and capture heat into an otherwise transparent glass foyer box, capturing solar heat and providing accentuated natural lighting. Moving through the foyer, the site's crescendo is revealed to all, the central auditorium, carefully placed at the junction between its northern and southern wings, the final destination for performers, musicians and visitors alike. A single curvilinear space, the enclosed and acoustically isolated space cantilevers bravely over its surrounding rehearsal spaces, the final jewel embedded within the civic crown of Simfonia.

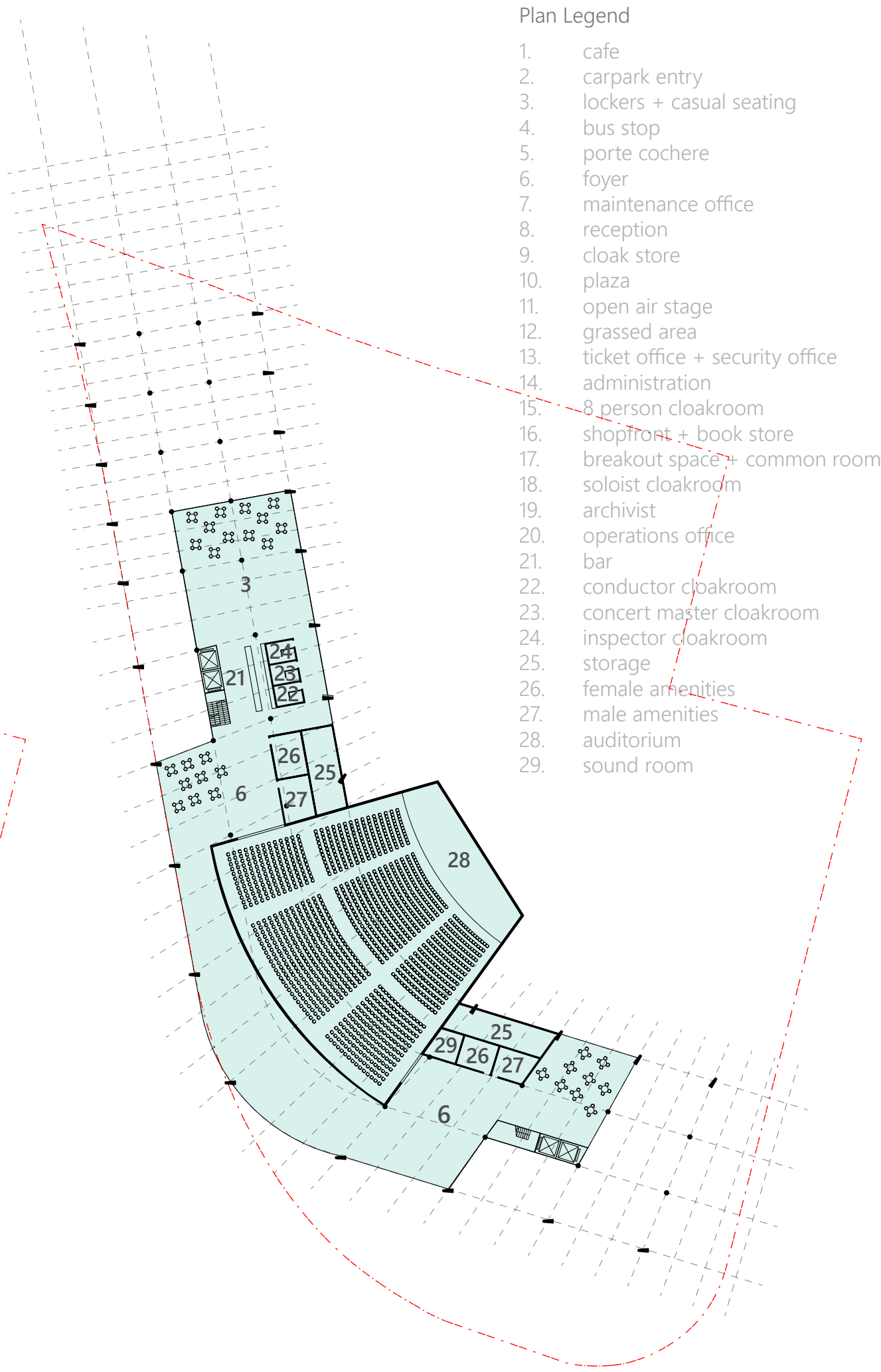
Situated within the complex continuum of a changing city, Simfonia thus weaves between the surrounding palette of historical and contemporary architecture, juxtaposing functional necessities with spaces for community engagement, all of which converge finally as a singular melodious whole within the central theatre of Simfonia.



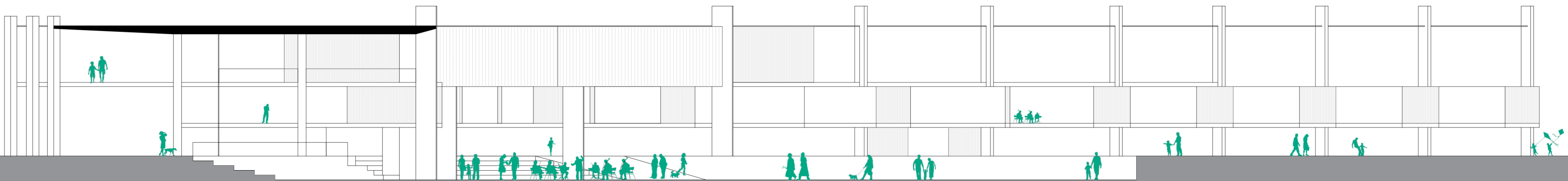
Plaza & Ground Floor | 1:750



Mezzanine Floor | 1:750



First Floor | 1:750



Auditorium Section | 1:250