

Street vizualization I.



Interior of the auditorium



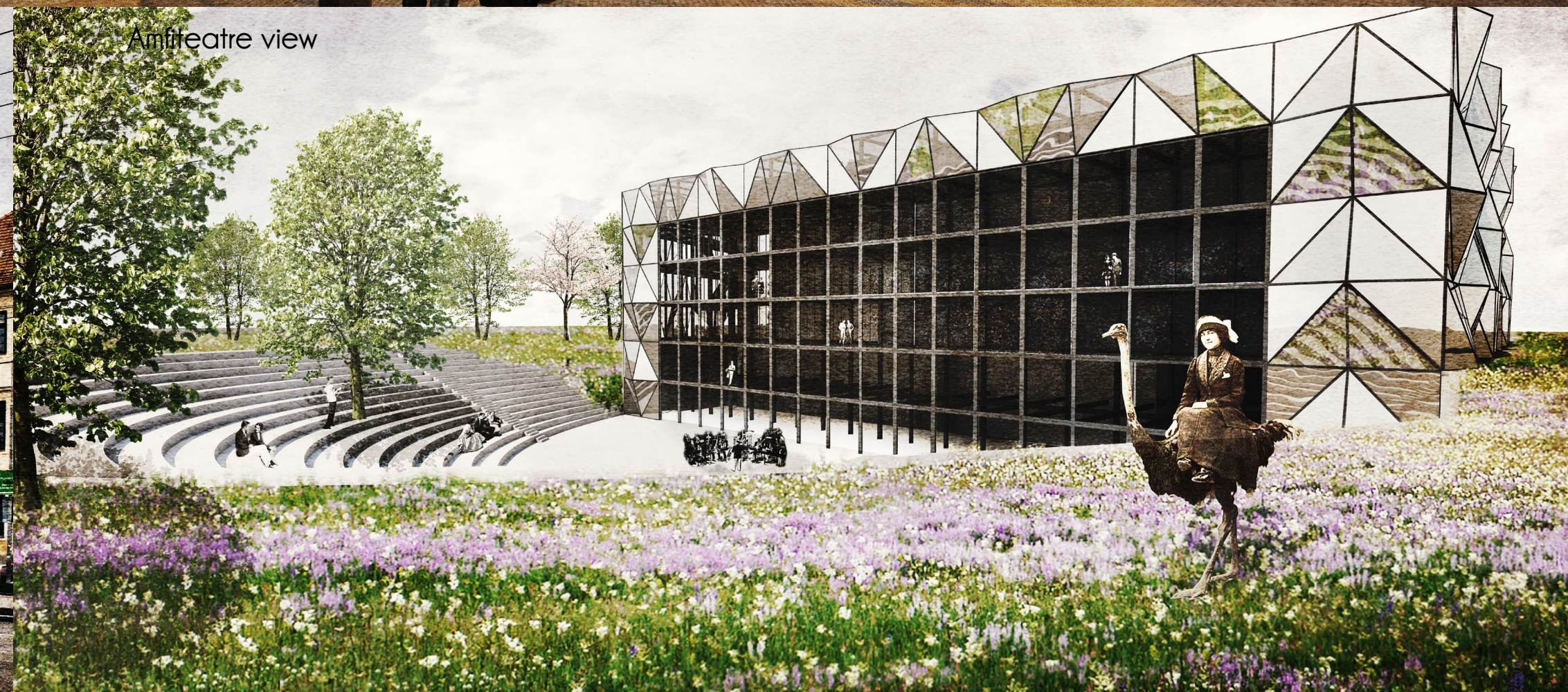
Interior of the square - main entrance



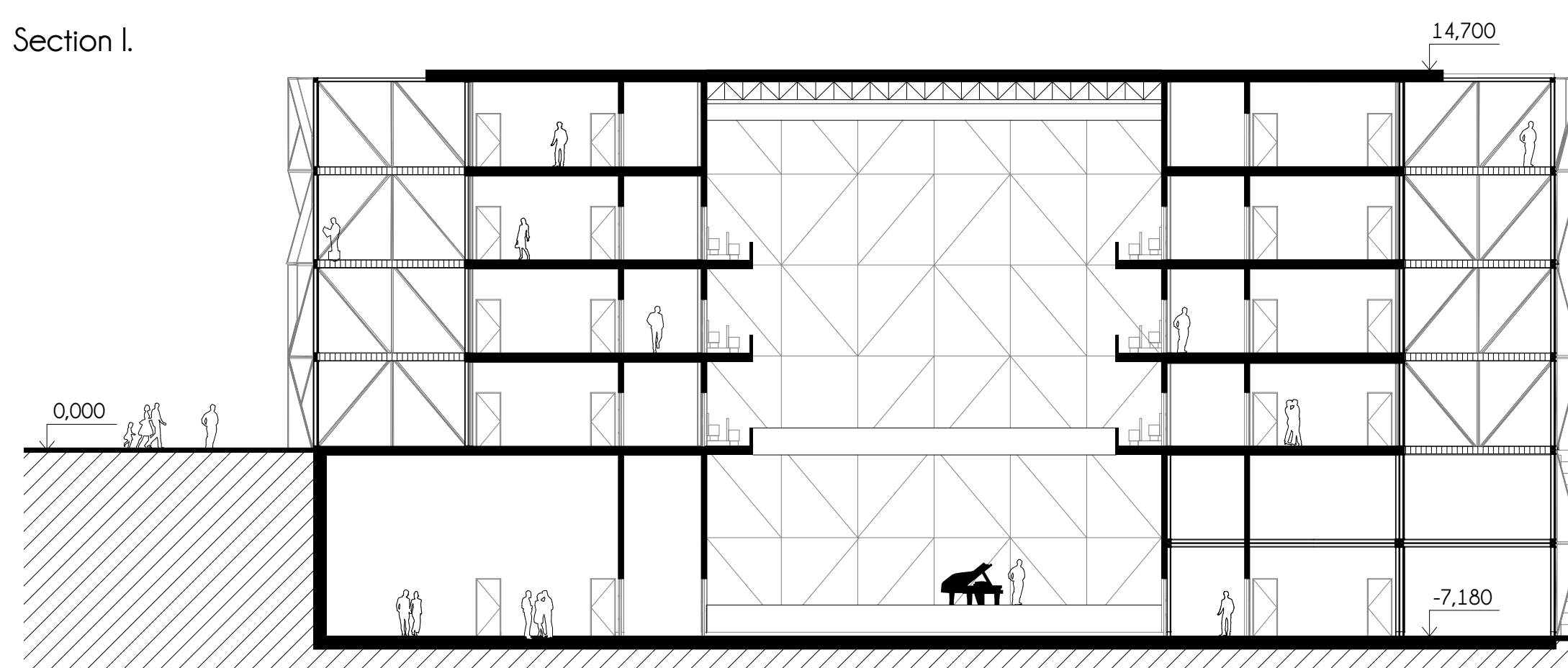
Street vizualization II.



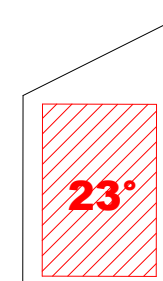
Amfiteatre view



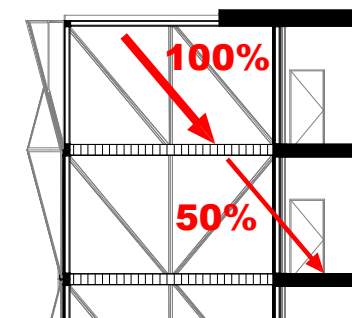
Section I.



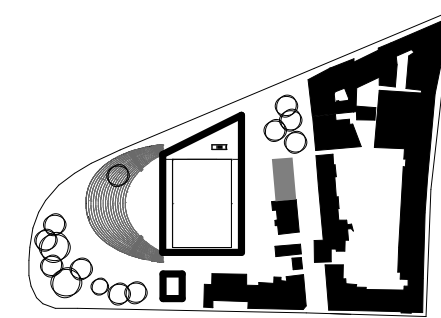
Heating schema



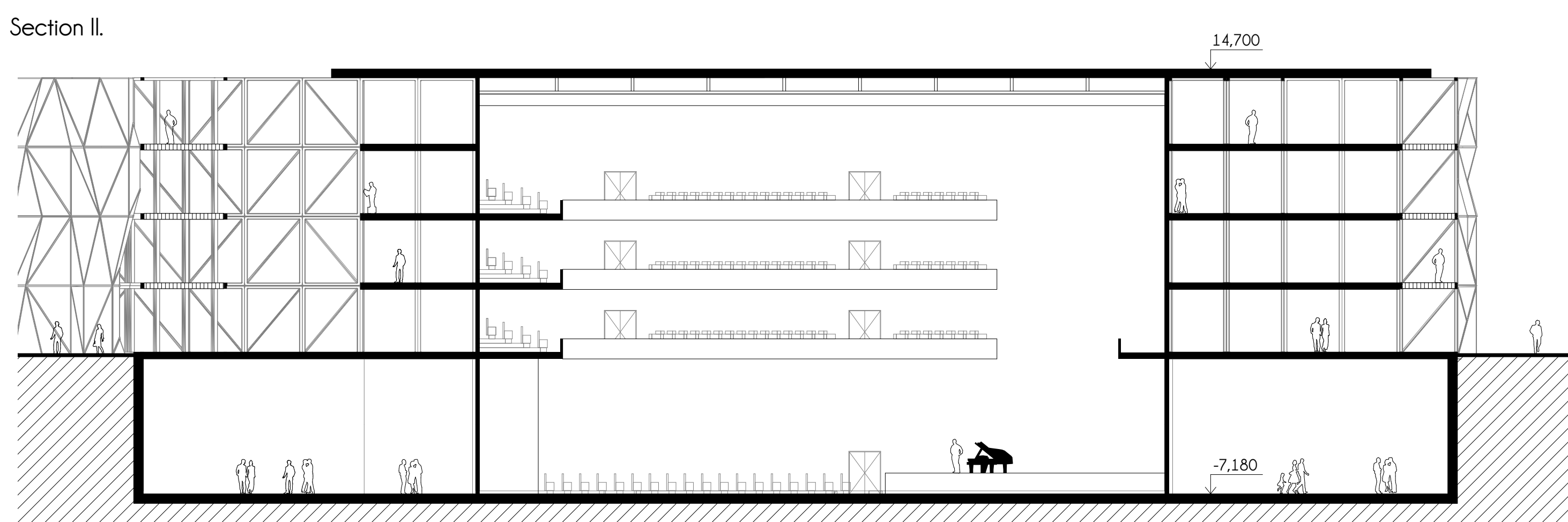
Solar schema



Urban schema



Section II.

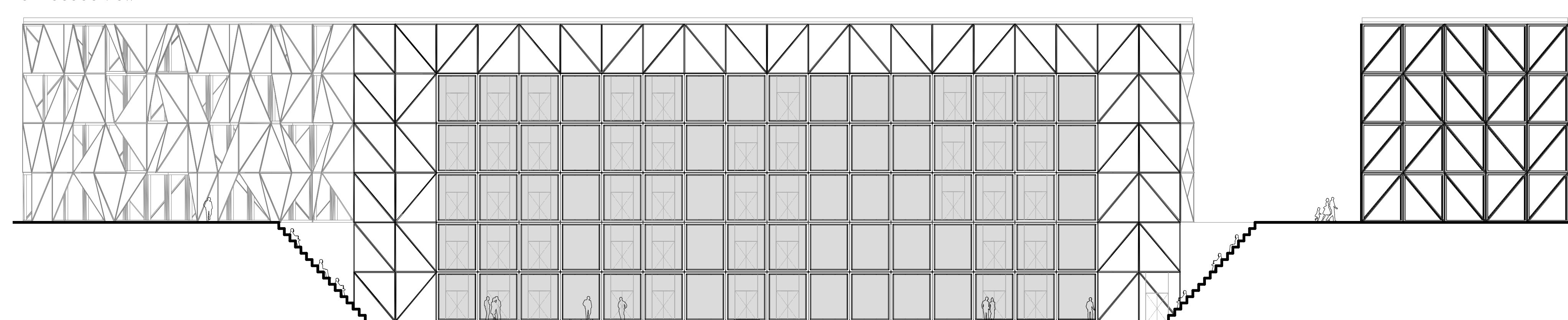


Typical view

different angles bring different reflections



Main facade view





Concert hall consists of three distinct parts, each equally important. The core featuring among other things grand auditorium, the "outer skin" that envelops the core and lets people naturally flow through and around the whole building (while enjoying the views) and the amphitheatre outside (with the exterior stages) which compliments the building and creates nice and cosy green public space that people can enjoy freely. Part of the design is also the secondary object - the hotel which provides accommodation for the performers (and other people as well). Together the complex is shaped in such a way that it completes the building block and creates a compact city unit.

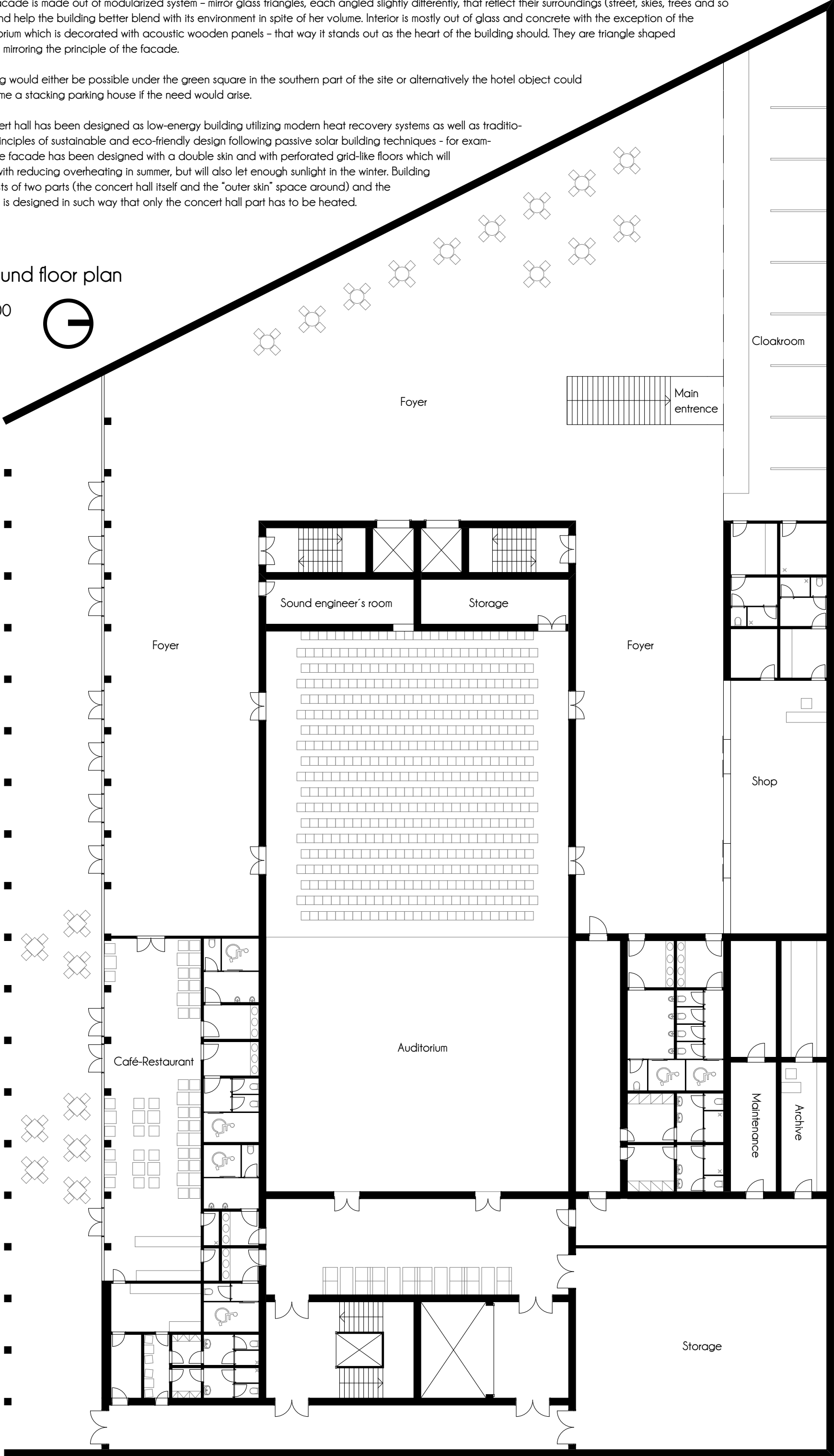
The facade is made out of modularized system - mirror glass triangles, each angled slightly differently, that reflect their surroundings (street, skies, trees and so on) and help the building better blend with its environment in spite of her volume. Interior is mostly out of glass and concrete with the exception of the auditorium which is decorated with acoustic wooden panels - that way it stands out as the heart of the building should. They are triangle shaped again mirroring the principle of the facade.

Parking would either be possible under the green square in the southern part of the site or alternatively the hotel object could become a stacking parking house if the need would arise.

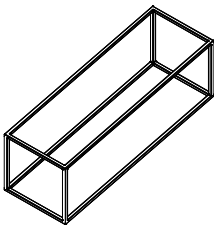
Concert hall has been designed as low-energy building utilizing modern heat recovery systems as well as traditional principles of sustainable and eco-friendly design following passive solar building techniques - for example the facade has been designed with a double skin and with perforated grid-like floors which will help with reducing overheating in summer, but will also let enough sunlight in the winter. Building consists of two parts (the concert hall itself and the "outer skin" space around) and the house is designed in such way that only the concert hall part has to be heated.

ground floor plan

1:200

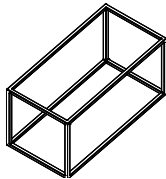


Whole building is made almost entirely out of three types of modules (with only few connections and the roof of the auditorium being different) utilizing their advantages (like easy construction and fast assembly) and specific visual appeal.



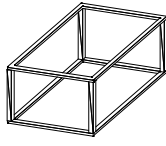
3 x 9 x h 3,6

Inspired by KOMA comfort



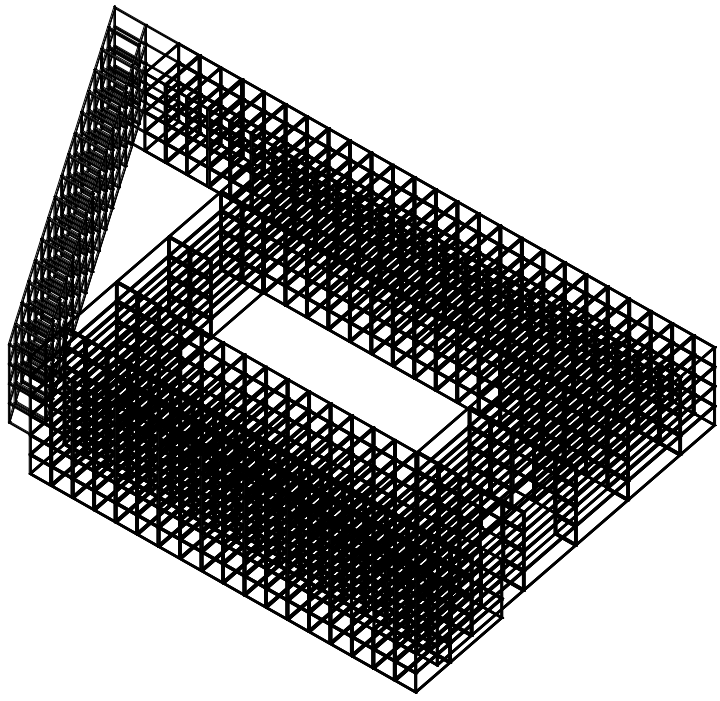
3 x 6 x h 3,6

Inspired by KOMA standart



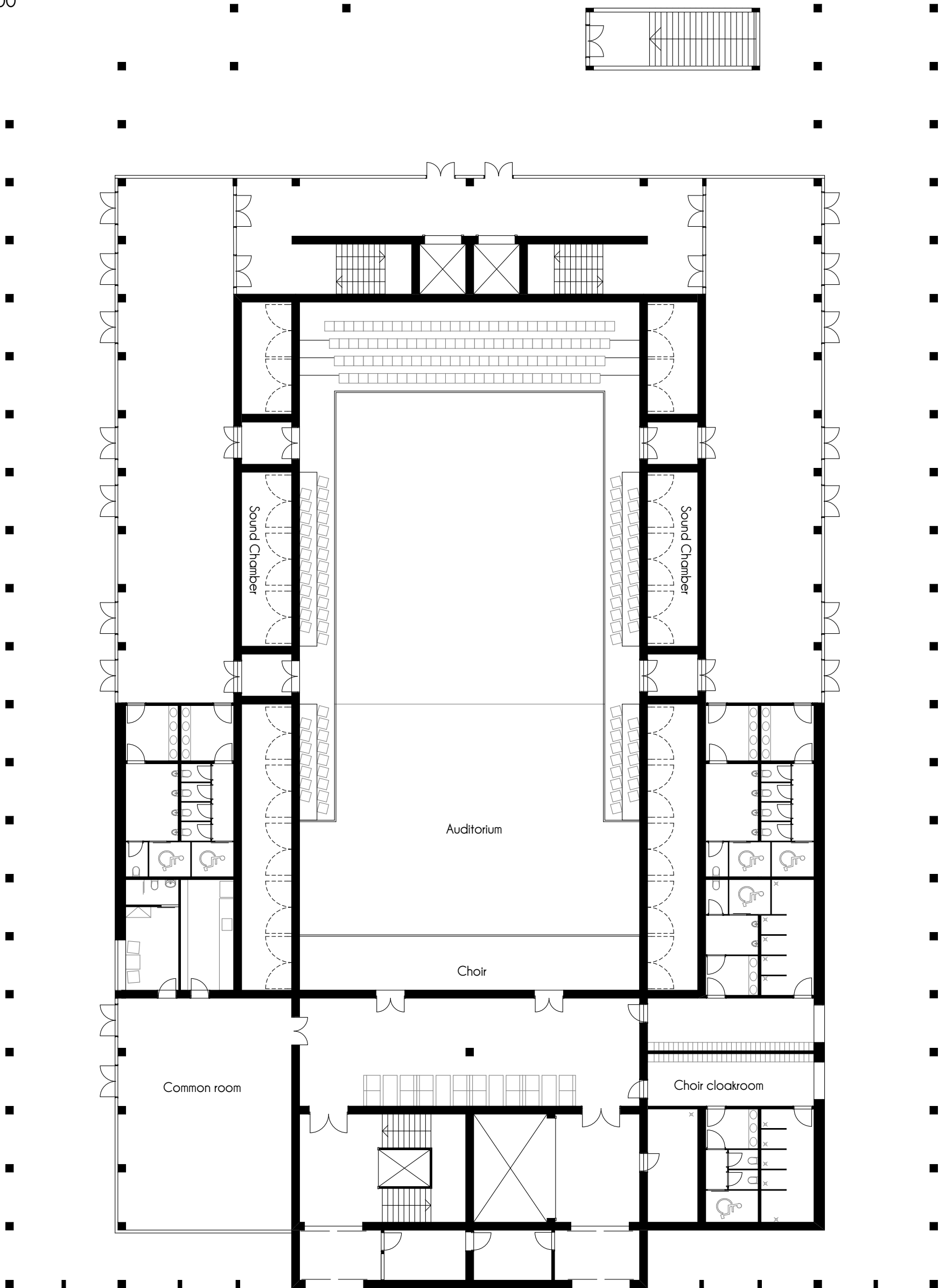
3 x 6 x h 3,6 bevelled

Inspired by KOMA city



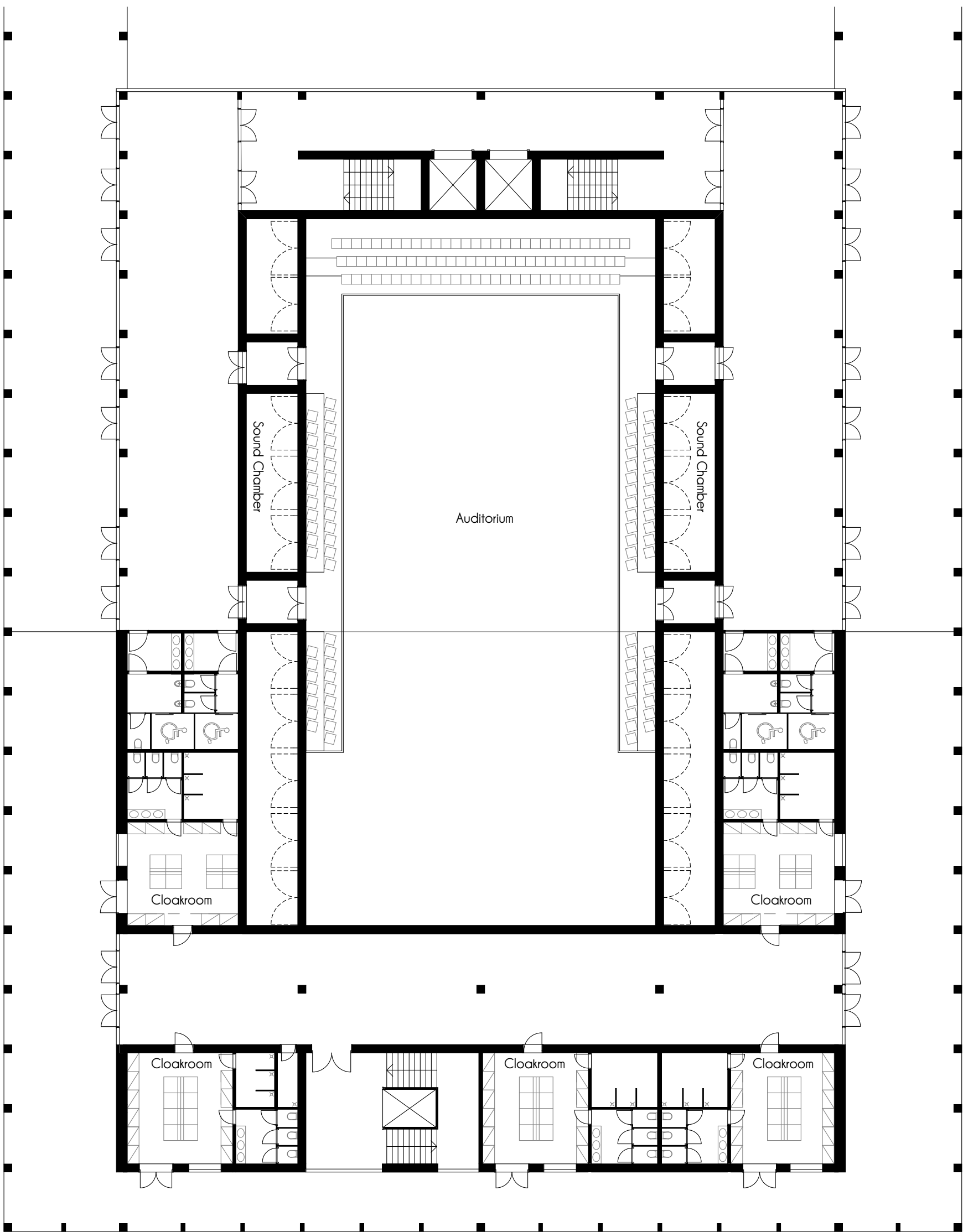
1st floor plan

1:200



2nd-3rd floor plan

1:200



4th floor plan

1:200

