

6. České Budějovice

7. FLYING BOX  
A configurable auditorium made in cantilever concrete structure.

**BASIC REQUIREMENTS FOR THE MULTI-PURPOSE MUSICAL CENTRE**

- Variable hall with a capacity of up to 1000 seats
- Background and offices of South Czech Philharmonic
- Premises for the visitors, adequate to the capacity
- Open Air musical stage
- Restaurant / café

**Basic Specifications for the Solution of the Subject of the Competition**

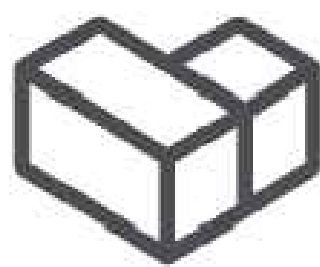
The specifications given below have been defined for the brief for erection of the new modular building of the South Czech Philharmonic in České Budějovice:

- Variable hall with a capacity of up to 1,000 persons - sitting or standing audiences, a dance floor, tables
- Background and offices of the South Czech Philharmonic - a detailed list of requirements, layout of rooms and their accessories is included in the competition documents
- Offices for approximately 10 persons including the office of the director and his assistant with reserved sanitary installations
- Common room for 80-100 persons that can be used for choir meetings, with background
- Cloakroom for the orchestra - 80 persons (no more than 8-10 persons per room) including sanitary installations
- Cloakrooms for soloists (8 independent rooms) including sanitary installations
- Archive
- Instrument storage
- Sound engineer's room
- Maintenance

- Background for the public
- Cloakrooms
- Sanitary installations
- Foyer adequate to the capacity of the hall
- Restaurant
- Café

- Open Air music stage

Other uses of the centre may be attached to the basic specification. Consider risks and opportunities of the area.

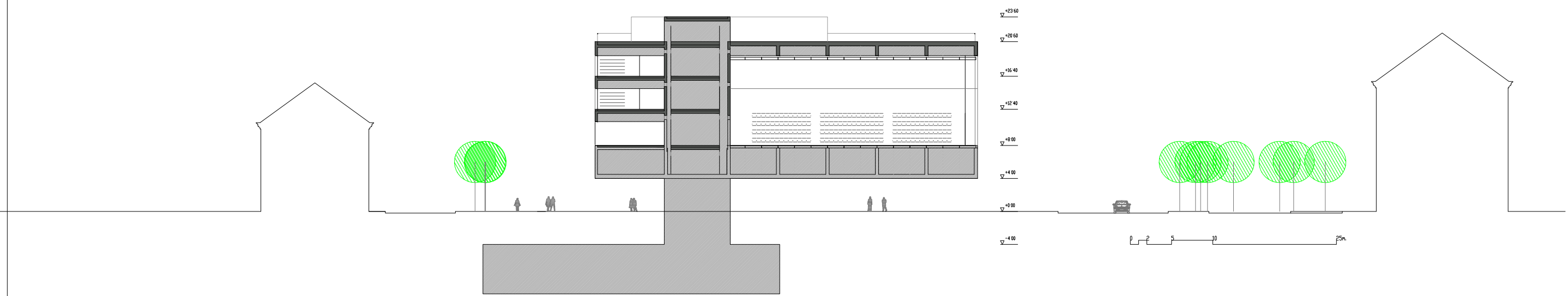
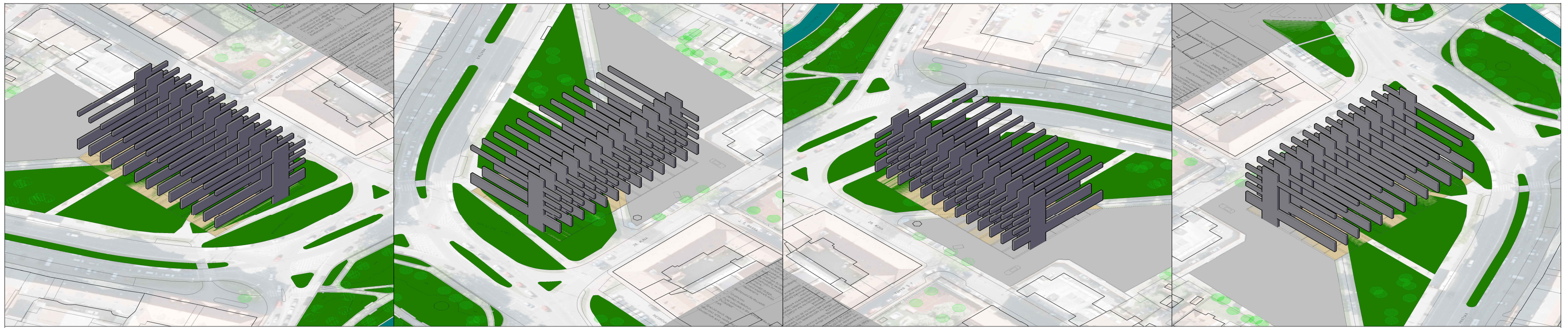


MODULARCH

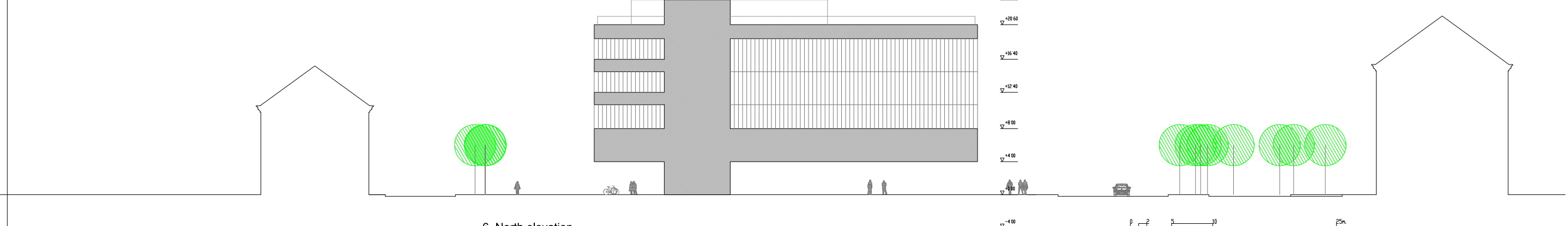
FLYING BOX

GBUCUC

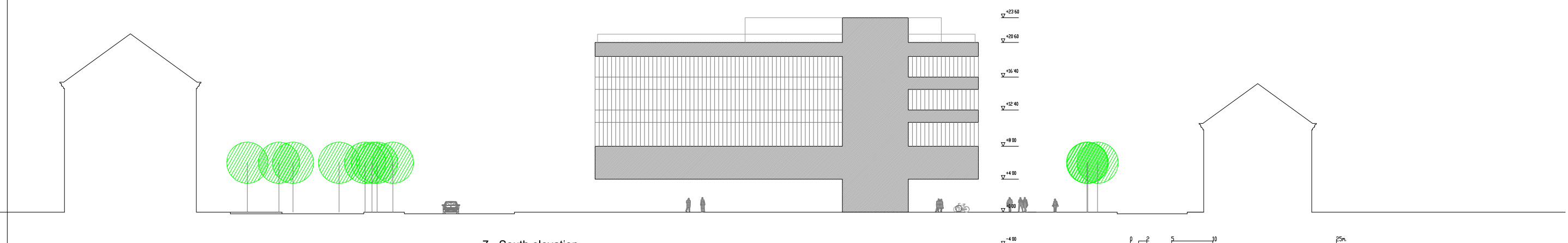




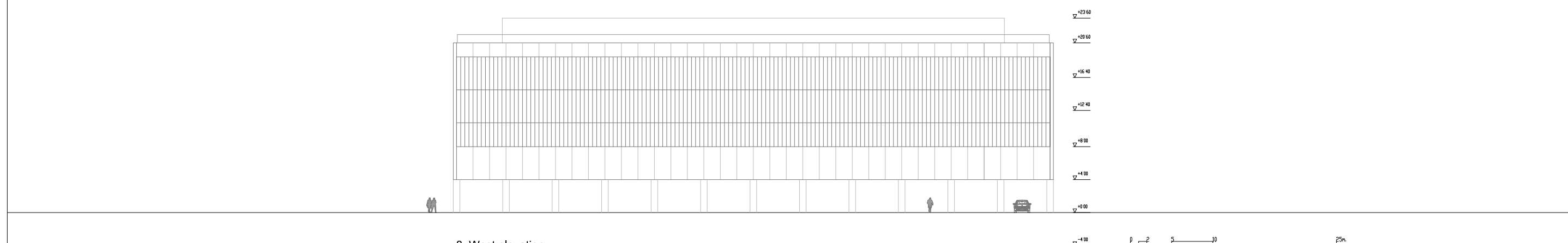
5. Transversal section



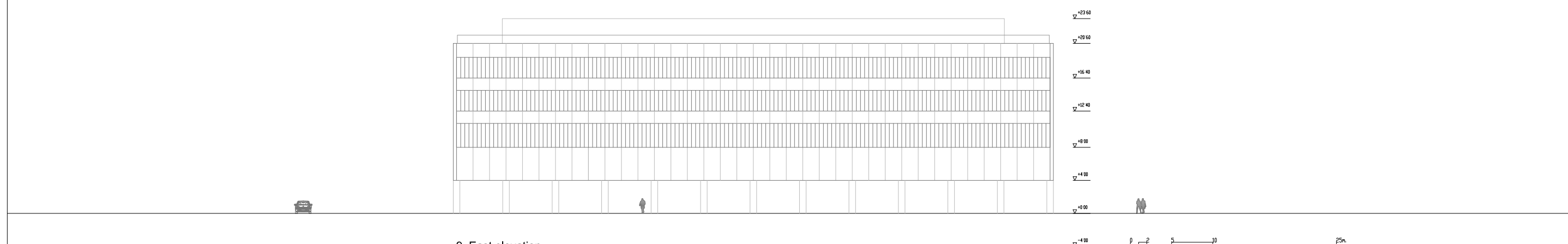
6. North elevation



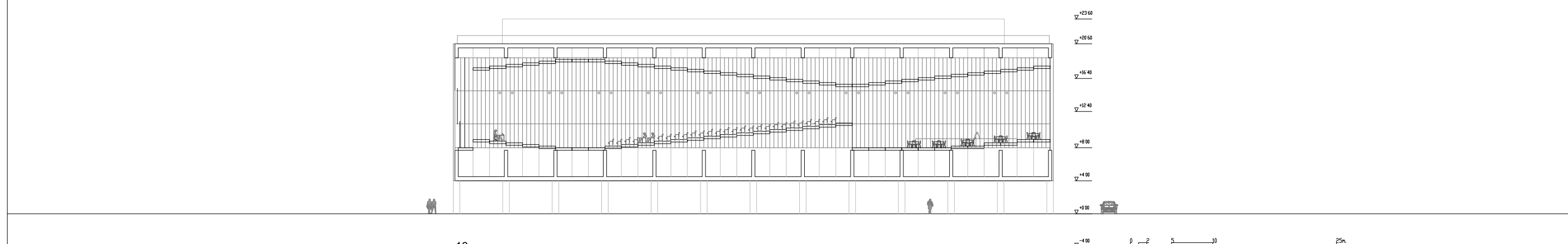
7. South elevation



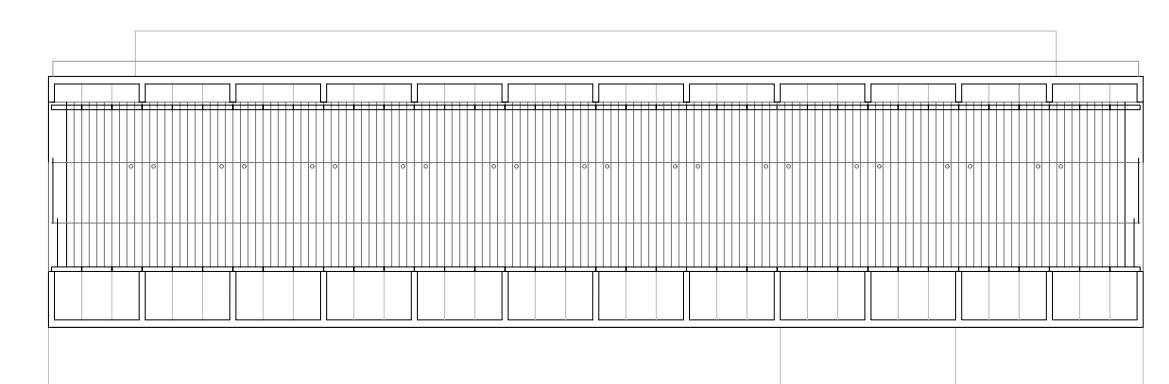
8. West elevation



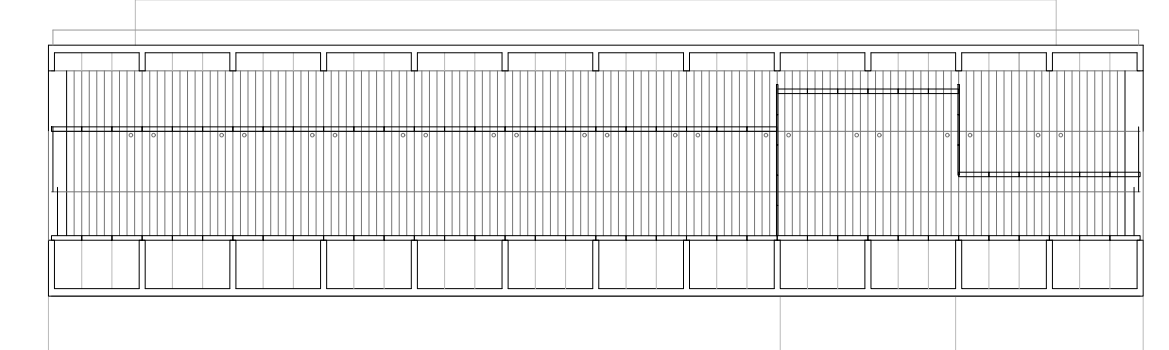
9. East elevation



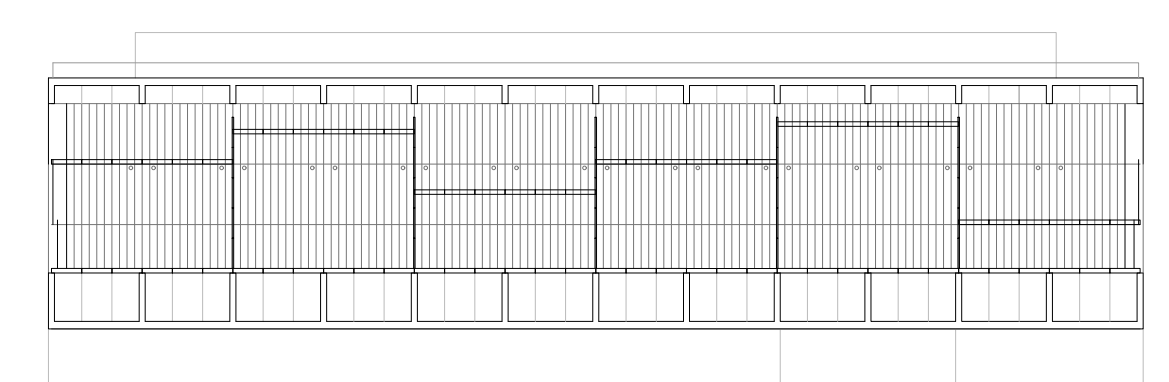
10.



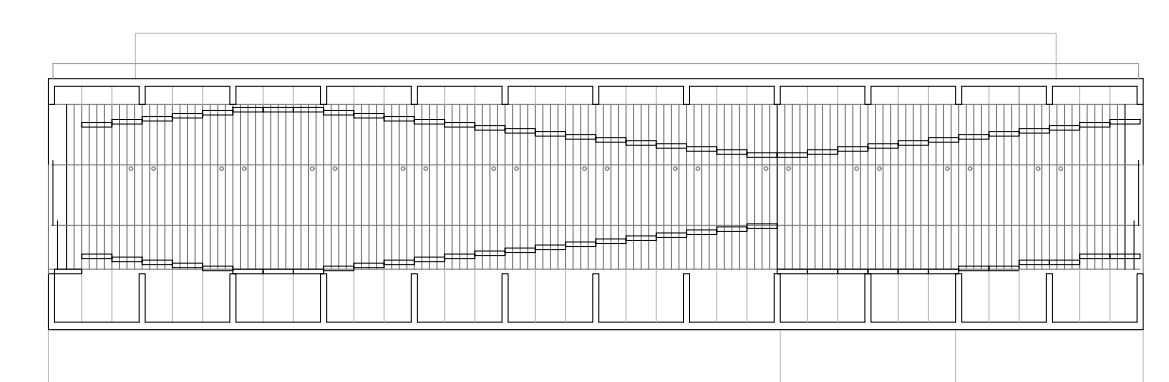
11. Configuration 1



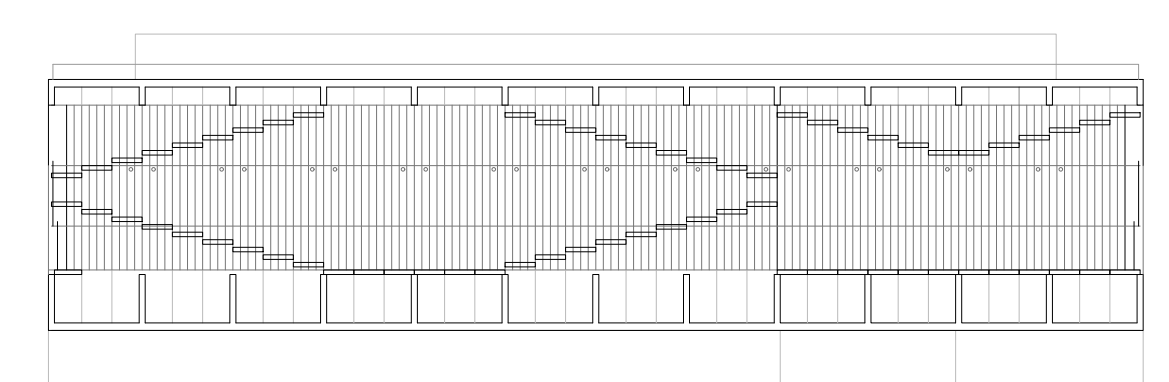
12. Configuration 2



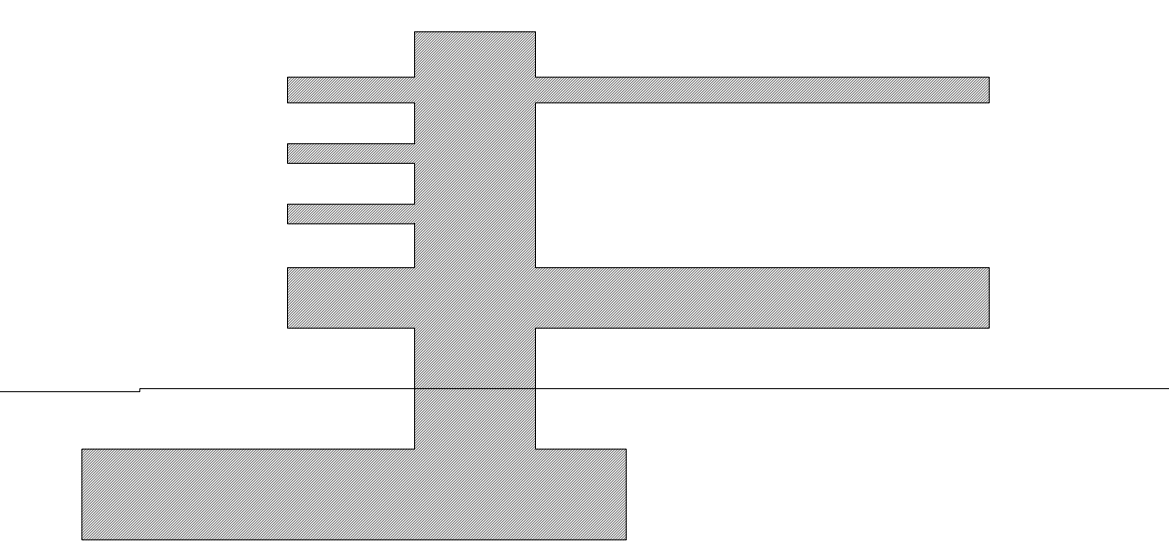
13. Configuration 3



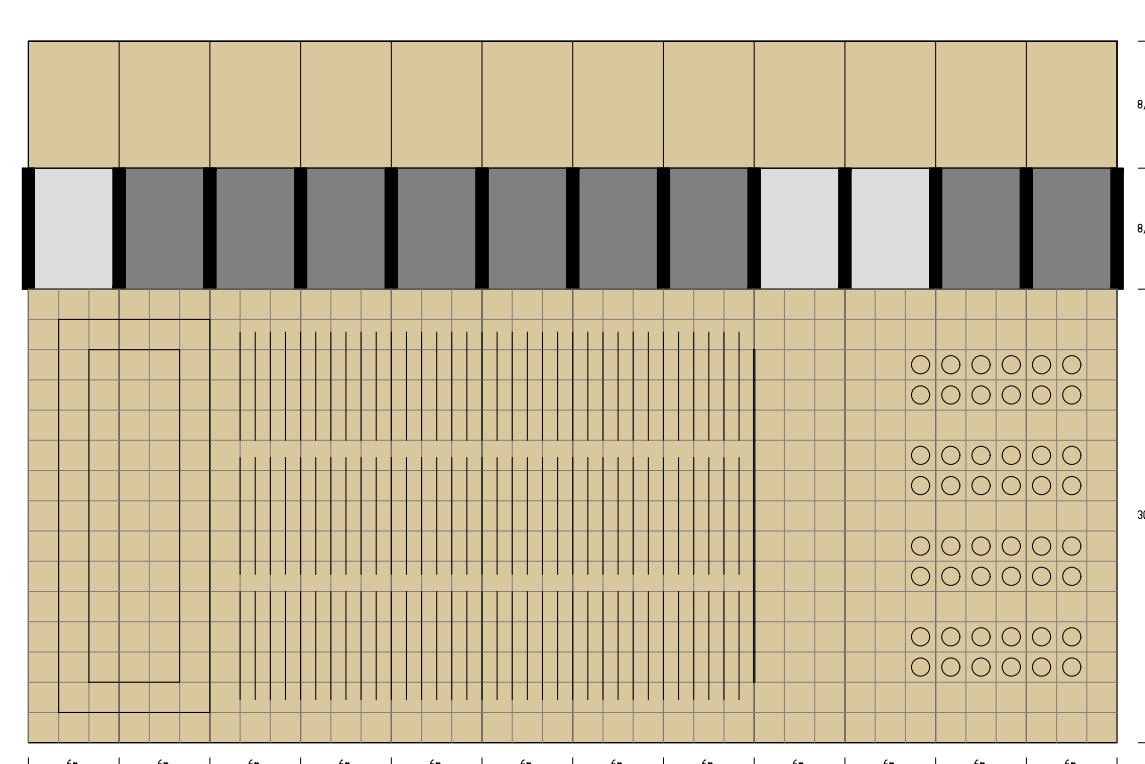
14. Configuration 4



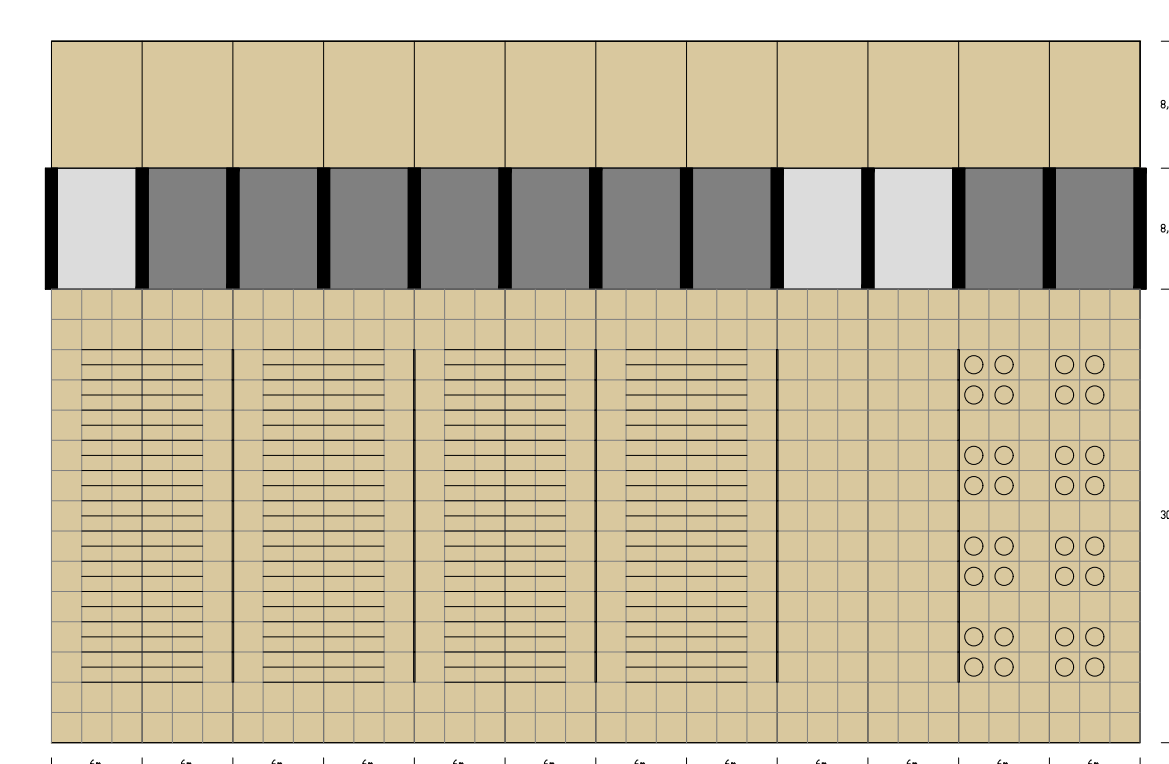
15. Configuration 5



16.



17. Configuration floor 4



18. Configuration floor 3