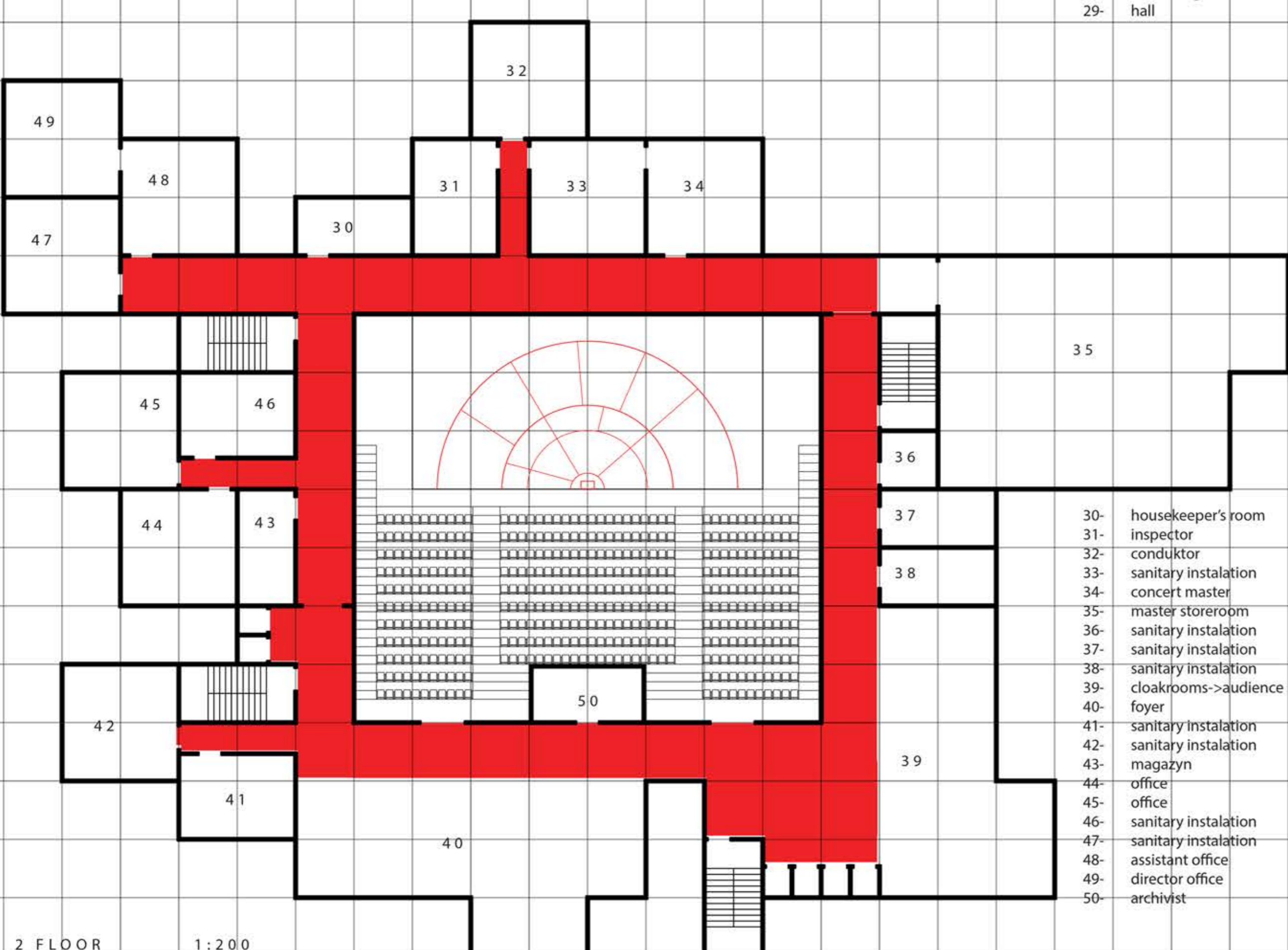


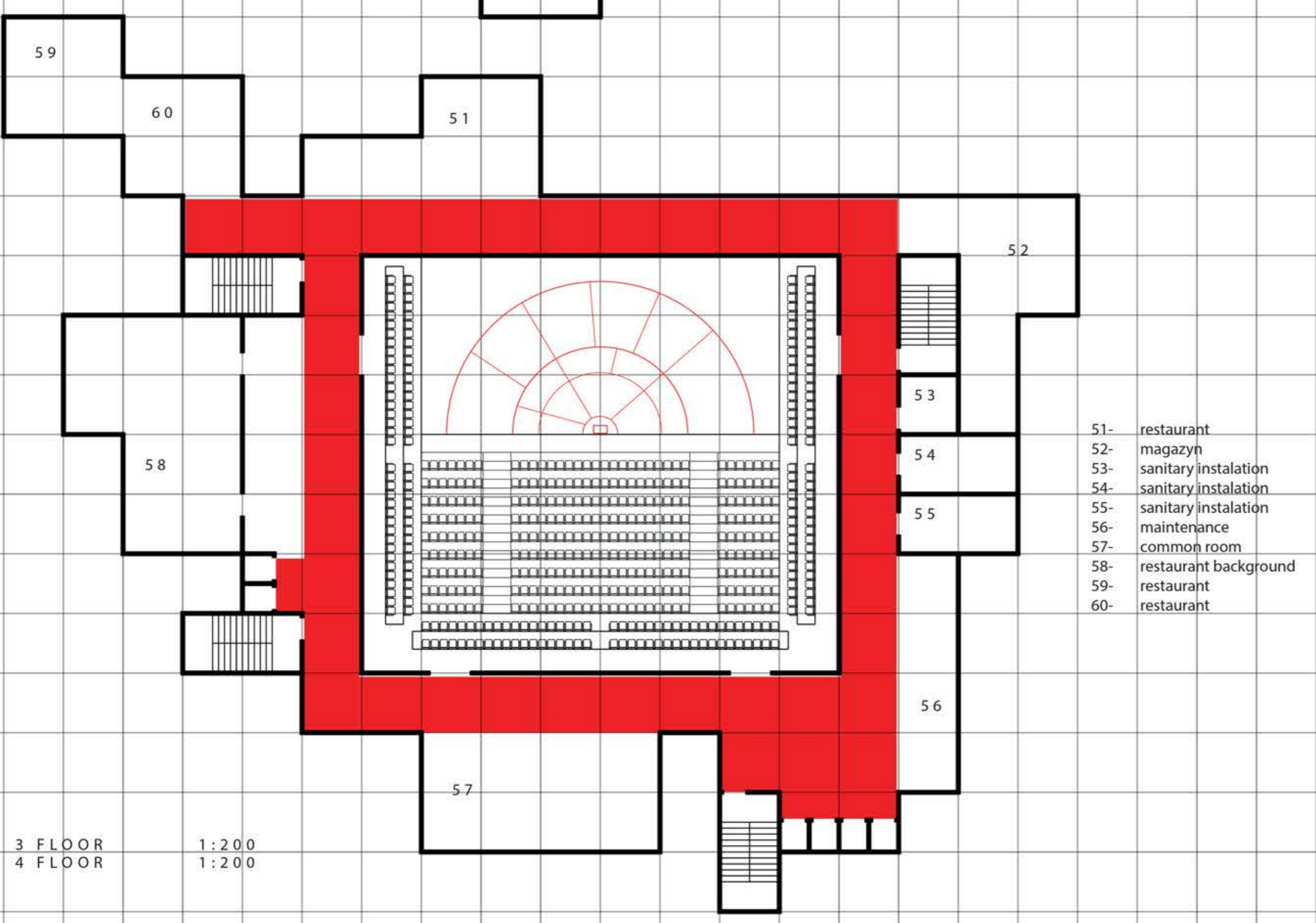
- 1- schowek
- 2- cloakroom for orchestra
- 3- sanitary instalation
- 4- cloakroom for orchestra
- 5- maintenance
- 6- winda towarowa
- 7- common room
- 8- cloakroom for soloists
- 9- sanitary instalation
- 10- cloakroom for soloists
- 11- sanitary instalation
- 12- cloakroom for orchestra
- 13- sanitary instalation
- 14- cloakroom for orchestra
- 15- cloakroom for soloists
- 16- sanitary instalation
- 17- cloakroom for soloists
- 18- sanitary instalation
- 19- cloakroom for soloists
- 20- sanitary instalation
- 21- cloakroom for soloists
- 22- magazyn
- 23- cloakroom for orchestra
- 24- sanitary instalation
- 25- cloakroom for orchestra
- 26- sanitary instalation
- 27- cloakroom for orchestra
- 28- sound enginner's room
- 29- hall

1 FLOOR 1:200



- 30- housekeeper's room
- 31- inspector
- 32- konduktor
- 33- sanitary instalation
- 34- concert master
- 35- master storeroom
- 36- sanitary instalation
- 37- sanitary instalation
- 38- sanitary instalation
- 39- cloakrooms->audience
- 40- foyer
- 41- sanitary instalation
- 42- sanitary instalation
- 43- magazyn
- 44- office
- 45- office
- 46- sanitary instalation
- 47- sanitary instalation
- 48- assistant office
- 49- director's office
- 50- archivist

2 FLOOR 1:200



- 51- restaurant
- 52- magazyn
- 53- sanitary instalation
- 54- sanitary instalation
- 55- sanitary instalation
- 56- maintenance
- 57- common room
- 58- restaurant background
- 59- restaurant
- 60- restaurant

3 FLOOR 1:200
4 FLOOR 1:200



CONTEXT

The location proposed for the Philharmonic is situated in the historic city center of České Budějovice. The neighborhood is completely built-up by urban blocks. Currently half of the parcel is a park with high trees and the rest is a car park. It is a one of the biggest green public space near to the old town.



SUBJECT AREA

IDEA

The main idea is to match two points of view in developing space. First, point of view comes from the historical urban block and second present open-green public space. The project proposal is to cover all the specified areas by the modular construction and make an urban block in the „old town way“. The idea is to keep the existing greenery, and cover the other part by new plants. Full block of the modular construction is raised by 6.5 meter to have place for greenery and keep the open public space.

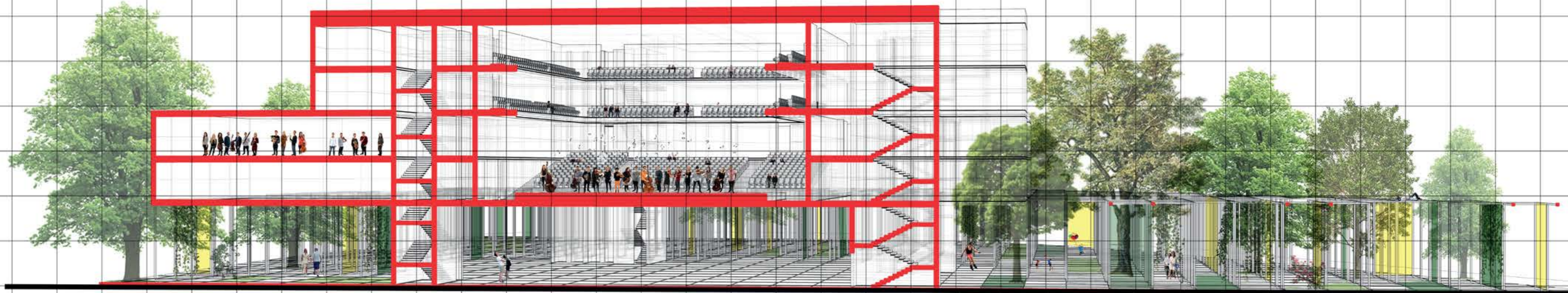


PROJECT

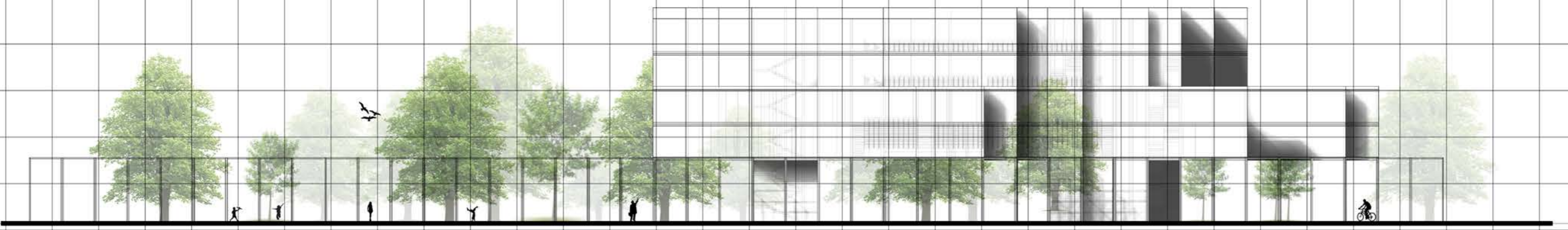
The building of the Philharmonic is a part of a modular construction. It is raised, and it makes open air roofed space; under it. The philharmonic is above in the green „modular“ garden. First floor is intended only for the musicians and their technical support. The audience is allowed in the building above the second floor. There is a foyer and background for the public. From the foyer guests can get to the green terraces hanging in the modular construction. On the third floor

CONSTRUCTION

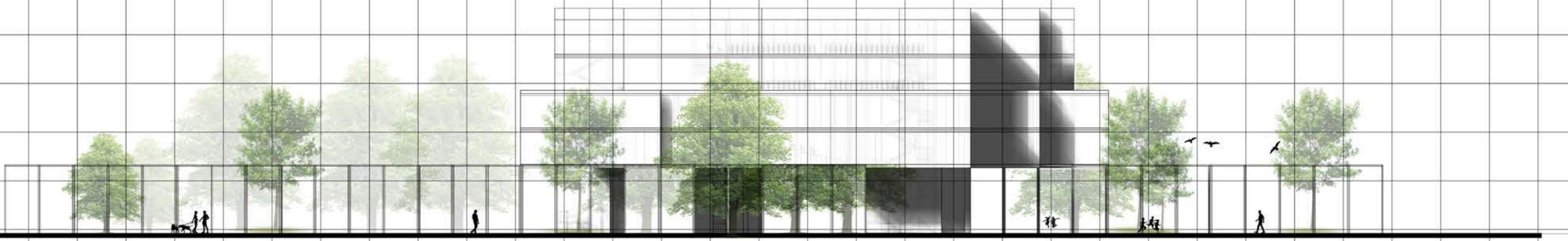
Modular construction is a container made of metal framework. It makes our space covered in a openwork sprawl. The container frames are laid vertically on the grid. The grid represent the smallest side of the container box. The project assumes different ways of using the container. In the green part the frames of the container are provided for growing plants. For the philharmonic the container sides are completed by glass or fiber-reinforced concrete (or light panels).



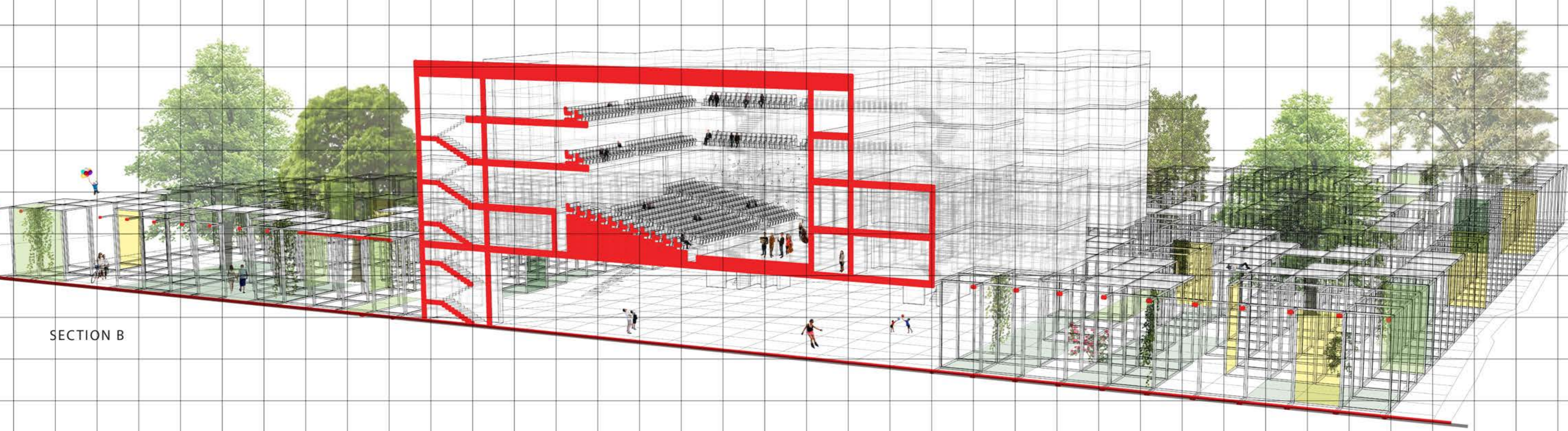
SECTION A



PLAIN VIEW



PLAIN VIEW



SECTION B

