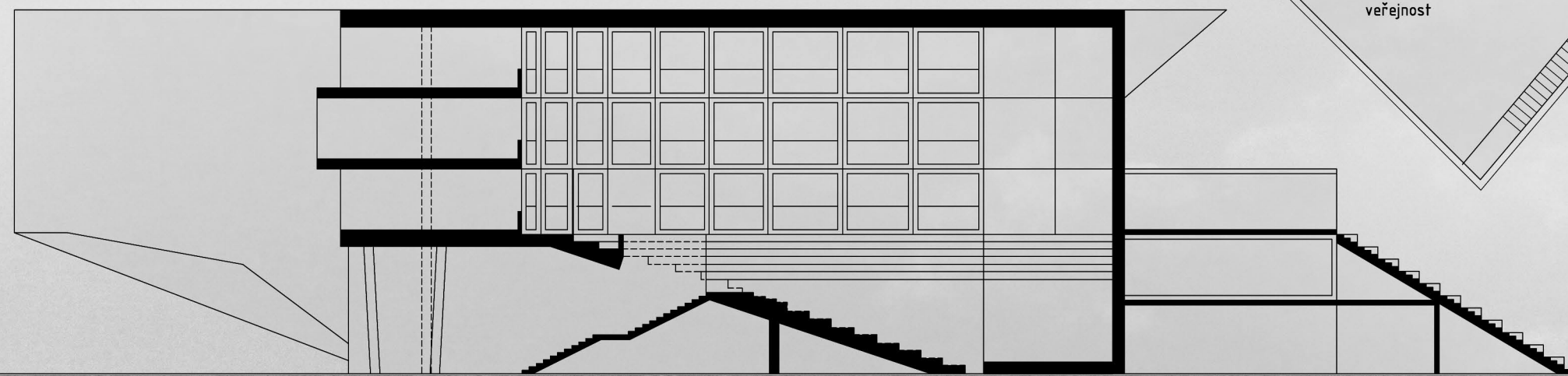
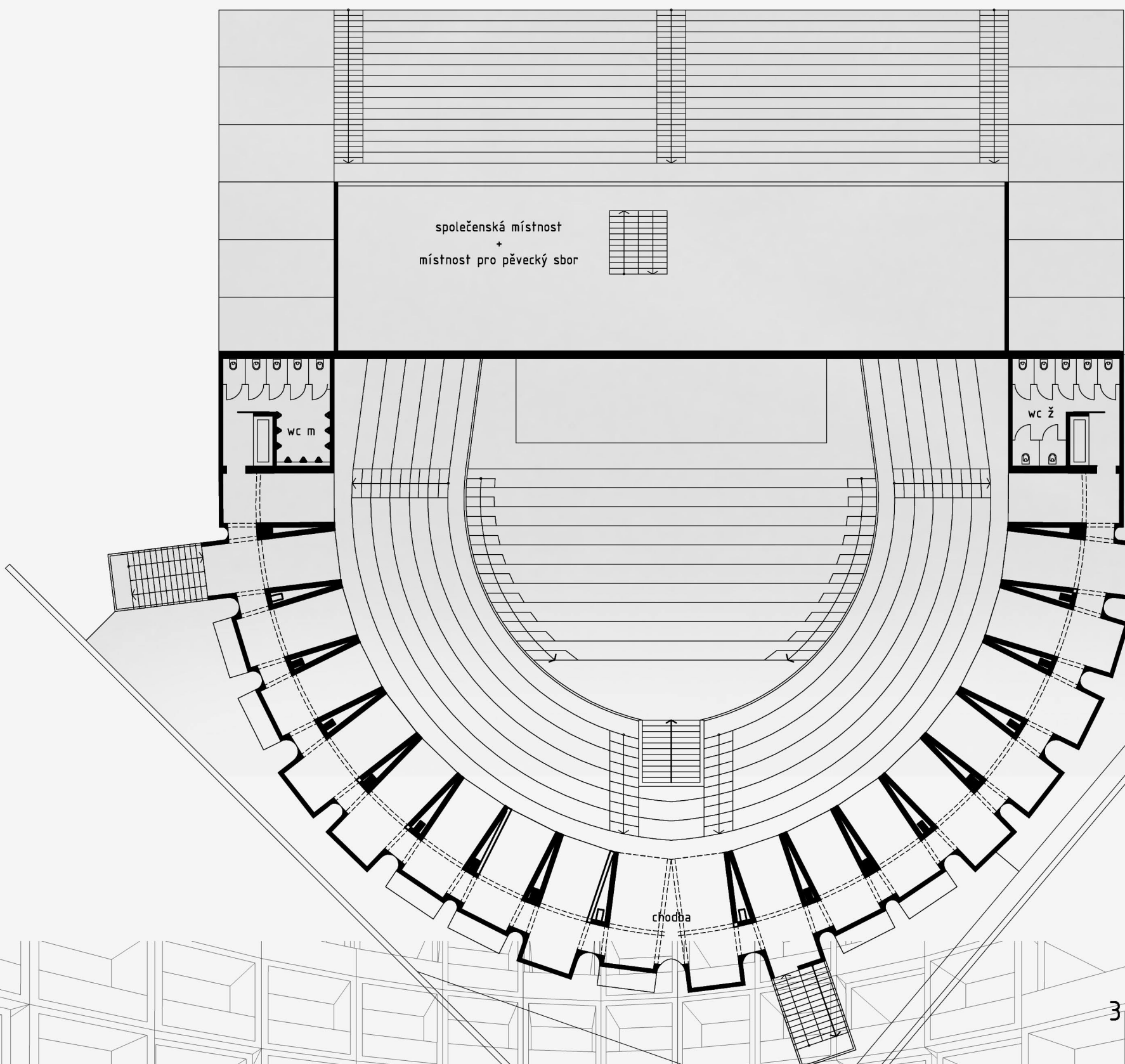


Architectural design:  
There are two components.  
The first matter is the core. The core is made up partly of modular systems Koma. It is nearly symmetrical. There are used a cell measuring 6 x 3 m. The second element of the building's facade. The facade is made of steel frame construction. The facade is partially transparent. Building is gauged on visitor traffic and traffic musicians.

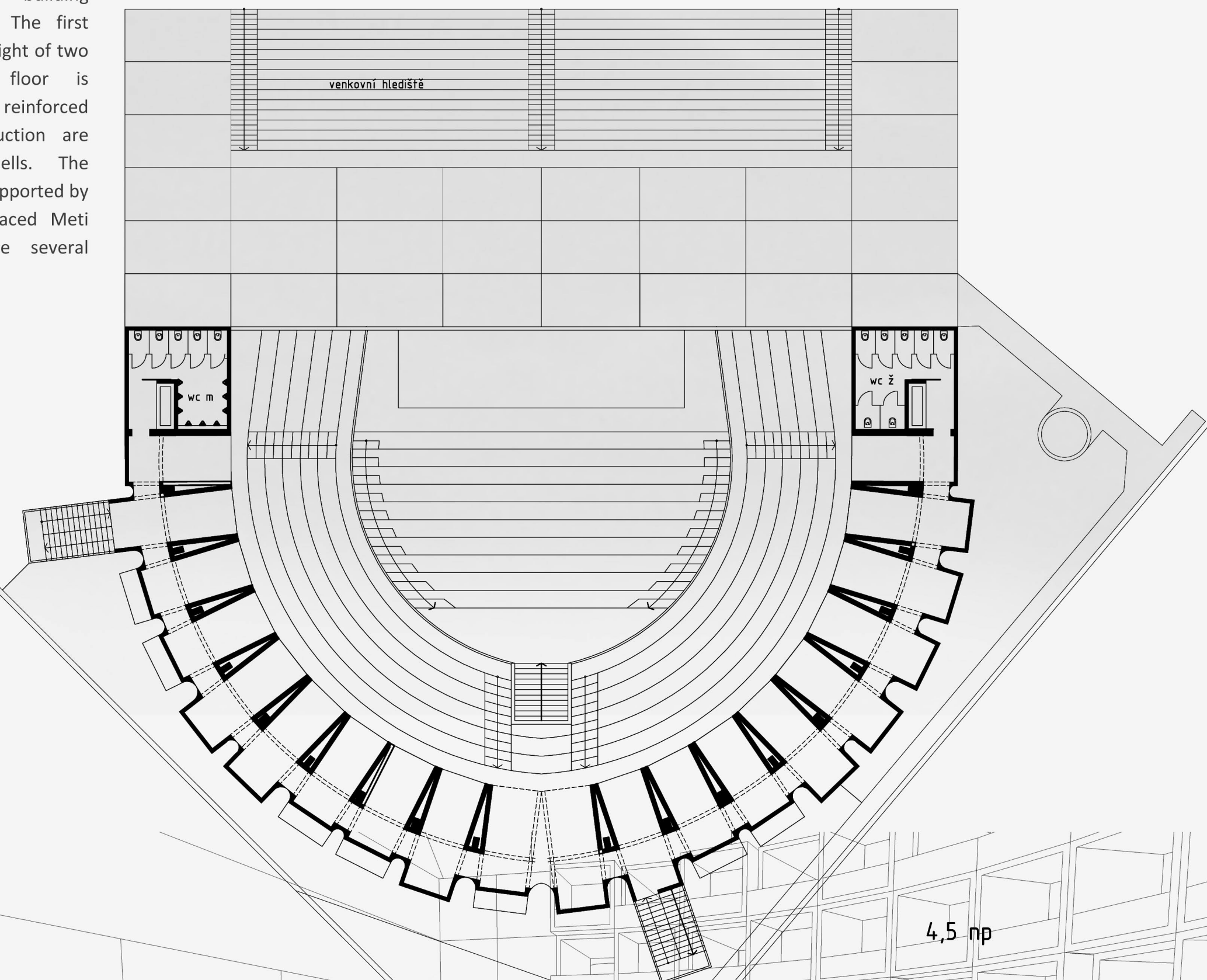
2 np



Construction: Conductor building consists modulamy coma. The first floor of the object is at a height of two modules. The ground floor is comprising a monolithic reinforced concrete. On this construction are fitted with systemic cells. The construction of the roof is supported by steel columns that are placed Meti systemic cells. There are several occasions module 3 x 6



3 np



4,5 np

